



**DENNIS-YARMOUTH REGIONAL SCHOOL DISTRICT
SCHOOL COMMITTEE MEETING
AGENDA**

Monday, April 3, 2023

**Dennis-Yarmouth Regional High School Library
210 Station Avenue
South Yarmouth, Massachusetts 02664**

6:30 p.m. – Regular Meeting

THIS MEETING WILL ALSO BE ACCESSIBLE TO VIEW REMOTELY:

Channel 22 Live: <https://bit.ly/3IV5MVh>

YouTube Live: <https://bit.ly/3CGdOXR>

Members Present:

Mr. Joseph Tierney, Chairperson
Ms. Jeni Landers, Vice Chairperson
Ms. Jennifer Rose, Secretary
Mr. Tomas Tolentino, Treasurer
Mr. Phillip Morris
Mr. Joe Glynn
Ms. Marilyn Bemis

Administration

Mrs. Carol Woodbury, Superintendent of Schools
Mr. David Flynn, Assistant Superintendent for Finance and Operations
Mrs. Maria Lopes, Assistant Superintendent of Student Services and Instruction
Kristen Stagg, Student Representative to the School Committee
Rose-Anna Joachim, Student Representative to the School Committee

I. Open the Meeting (6:30 p.m.)

II. Reports

- A. Student Representative Reports – Kristen Stagg and Rose-Anna Joachim
- B. Superintendent Report – Carol Woodbury
Field Trip Proposal – Kris Hansen (Enclosure 2B)
Motion: Move to approve a Dennis-Yarmouth Regional High School field trip to Japan scheduled for April 2024 as per Dr. Funk's March 29, 2023 memo.
- C. School Building Committee Report – Joseph Tierney
- D. School Committee Liaisons to the Boards of Selectmen
- E. Assistant Superintendent Report – David Flynn
 1. MSBA Statement of Interest for M.E. Small Elementary School 2023 (Enc. 2E1)

Motion:

Resolved: Having convened in an open meeting on April 3, 2023, prior to the SOI submission closing date, the Dennis-Yarmouth Regional School Committee, in accordance with its charter, by-laws, and ordinances, has voted to authorize the Superintendent to submit to the Massachusetts School Building Authority the Statement of Interest Form dated no later than April 14, 2023 for the Marguerite E. Small Elementary School located at 440 Higgins Crowell Road, West Yarmouth, MA 02673 which describes and explains the following deficiencies and the priority category(s) for which an application may be submitted to the Massachusetts School Building Authority in the future.

Category 5: Replacement, renovation or modernization of school facility systems, such as roofs, windows, boilers, heating and ventilation systems, to increase energy conservation and decrease energy related costs in a school facility. The Marguerite E. Small Elementary School needs significant renovation work in all major systems. The building's exterior components including roofs, doors, windows, and masonry have all been cited as high-priority issues. The 2014 facilities audit and the updated study in February 2020 by Bureau Veritas identified the same issues along with possible structural settlement of the loading dock, interior air quality issues, leaking sanitary and heat piping, and the presence of asbestos containing materials. Additionally, the building lacks fire suppression and has multiple ADA requirement issues.

Category 7: Replacement of or addition to obsolete buildings in order to provide for a full range of programs consistent with state and approved local requirements. Current capacity is reasonable, however classroom layouts and floor plans with a size of about 900 square feet limit the kinds of educational activities that would reflect best practices for the grades and specialized services that must be provided within this school;

and hereby further specifically acknowledges that by submitting this Statement of Interest Form, the Massachusetts School Building Authority in no way guarantees the acceptance or the approval of an application, the awarding of a grant or any other funding commitment from the Massachusetts School Building Authority, or commits the Dennis-Yarmouth Regional School District to filing an application for funding with the Massachusetts School Building Authority.

2. FY2024 Budget

III. School Committee Business

- A. Superintendent Search
- B. Consent Agenda (Enclosure 3B)

IV. Bills, Requisitions and Payroll

V. Information Item

Letter from Nauset Regional Middle School to Mr. Bovino

VI. Calendars

VII. Public Comment

VIII. Adjournment

**The items listed to be discussed are those reasonably anticipated by the Chair. Not all items listed may in fact be discussed and other items not listed may also be brought up for discussion to the extent permitted by law.*

***Please note: The timeframes listed above are intended to guide the School Committee in their work. It should be understood that the times are approximate, and therefore may occur earlier than noted; and may be taken out of order at the request of the Chair and a vote of the School Committee.*

Should there be a need for clarification on any of the aforementioned, please contact me prior to the meeting to allow sufficient time for further research if necessitated. Thank you. Carol A. Woodbury, Superintendent

Consent Agenda (Enclosure 3B)

The Superintendent recommends the School Committee approve the following items as presented:

Minutes

March 20, 2023



Dennis-Yarmouth Regional High School
210 Station Avenue
South Yarmouth, Massachusetts 02664-3026

Enc 2B

MAIN OFFICE
(508) 398-7630
FAX: 398-7635

GUIDANCE & COUNSELING
(508) 398-7650
FAX: 398-7602

PAUL FUNK
Principal


ELIZABETH AMBROSINI
KENDRA BENNETT
JOSHUA CLARKIN
Assistant Principals

CRAIG EVANS
Dean of Students

MARY O'CONNOR
Athletic Director

MEMORANDUM

TO: Mrs. Carol Woodbury
Superintendent

FROM: Dr. Paul A. Funk
Principal 

DATE: March 29, 2023

RE: Kris Hansen Educational Travel
Trip to Japan

Dennis-Yarmouth Regional High School requests approval for a trip to Japan called: "Robotics, Engineering, & the Future of Cities in Japan". The proposed dates of this trip are April 12 – 20, 2024. We also respectfully request permission for the participating students to miss school for one (or potentially two) days, so that they may participate in this experience.

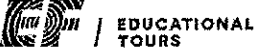
The trip is being planned by Technology Teacher, Kris Hansen. The cost of the trip is estimated to be \$4,929.00, which includes round-trip airfare and all on-tour transportation, hotels with private bathrooms, breakfast and dinner, a full-time tour director, daily activities, tours, and entrances to attractions.

Appropriate permission slips will be completed and expectations for appropriate behavior will be reviewed with all participants.


I recommend approval of this trip and look forward to an opportunity to review this request with you.

Thank you.

PAF/jdp
Enclosure




EDUCATIONAL TOURS



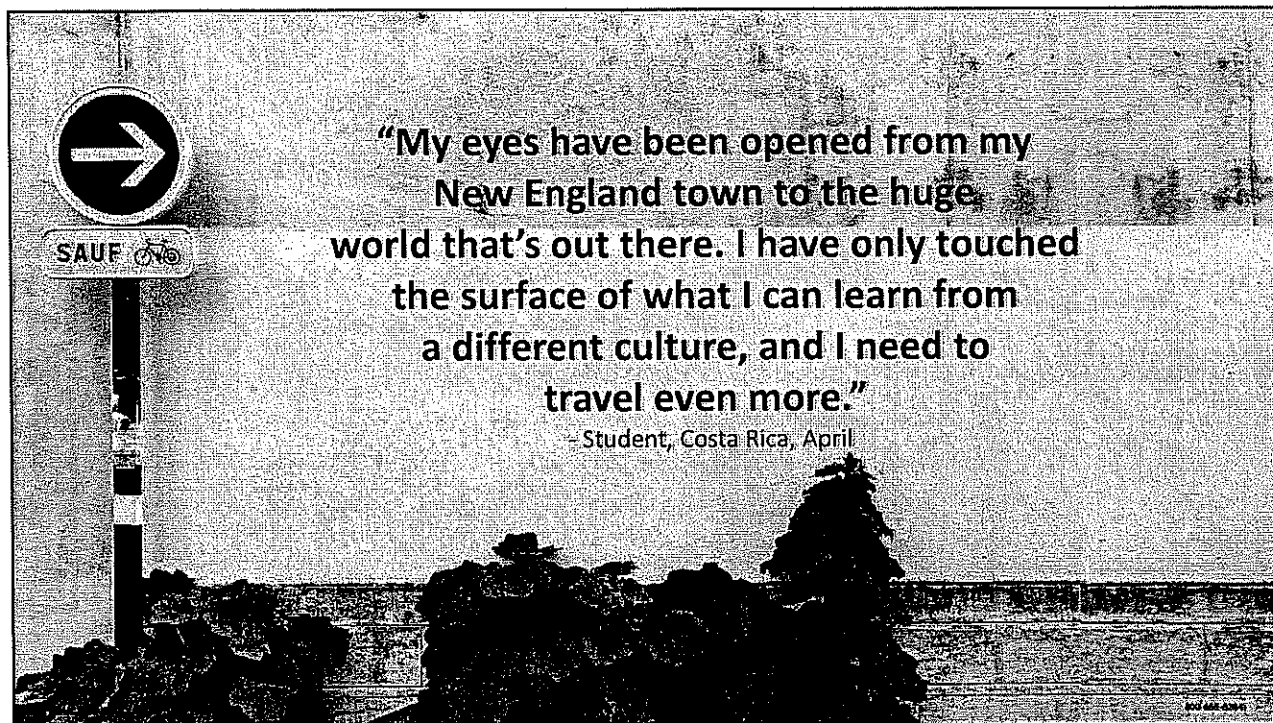
Travel-Based Learning at Dennis-Yarmouth

With EF Educational Tours
"Opening the world through education"

EF EDUCATIONAL TOURS 800-464-2781



From Indio, CA to Japan with student Jenny G. | EF Educational Tours – YouTube



Who is EF?

- The World Leader in International Education
- EF Education First is a family owned and operated company, founded in 1965 with the mission of opening the world through education.
- EF offers 17 products spanning across language learning, cultural exchange, academic achievement, and educational travel.
- EF employs 27,500 educators, and 24,500 office staff within our 612 offices and schools in 50 countries worldwide, that also aids in on the ground support
- EF is accredited just like the schools and universities we partner with

EF EDUCATIONAL TOURS



Educational Philosophy - We are an Education Company, First



G
Growth mindset

Students will learn to embrace new opportunities and challenges with an open mind by:

- Expanding their curiosity
- Embracing new opportunities
- Stepping out of their comfort zones



G
Global perspective

Students will expand their world views as they engage with new cultures by:

- Building understanding
- Exploring new mindsets
- Communicating across cultures



P
Personal development

Students will discover more about themselves as they grow on a personal level by:

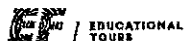
- Increasing their confidence, independence, and self-awareness
- Developing more empathy



A
Action & impact

Students will gain necessary skills to navigate and make an impact in an ever-evolving world by:

- Becoming better collaborators
- Gaining leadership and decision-making skills



What We Offer



Educational tours

Help students discover more about themselves and their place in the world.



Middle school tours

Immersive itineraries designed to ignite curiosity in students aged 11-15.



Language and culture tours

Students develop language skills through immersive activities and local experiences.



STEM tours

Itineraries filled with hands-on experiences and collaboration with STEM experts.



Global Leadership Summits

Educational tours combine with leadership conferences that tackle global issues.



Service Learning tours

Work side by side with locals on community-driven projects.



Custom-designed tours

Customize any itinerary to your school's needs or create your ideal tour from scratch.

Your support partner



Tour Consultant

My consultant helps me, your Group Leader, every step of the way from planning our tour all the way until we depart



Traveler Support Team

This team works with all of you, parents and students, to answer any possible questions from payments to dietary needs and more, including all the what-ifs and how-tos



Tour Director

Our Tour Director is our 24/7, bilingual guide who will be leading our tour, handling all of the logistics, and exposing us to local history and culture

Group Leader

That's me! I'll be here to support all of you as well, along with my chaperone team

Your safety partner



Local support and insight

With staff on the ground 365 days a year in over 50 countries – including in Tokyo, Japan – EF has local knowledge to keep our groups safe



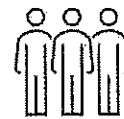
EF's Safety and Incident Response Team

This team works 24/7 around the world to help with everything from a sprained ankle to a lost passport



Rigorous health standards

EF is actively innovating on global standards for cleanliness & safety amid the COVID-19 pandemic



Eyes and ears on the road

Our Tour Director will be with us 24/7, along with myself and my chaperone team, to keep travelers safe

Your education partner

The best way to help students gain new perspectives and build skills for the future is through experiential learning



EF's Personalized Learning Guide

This guide helps students put a more personal lens on their tour by tapping into their own interests and passions.



High school or college credit

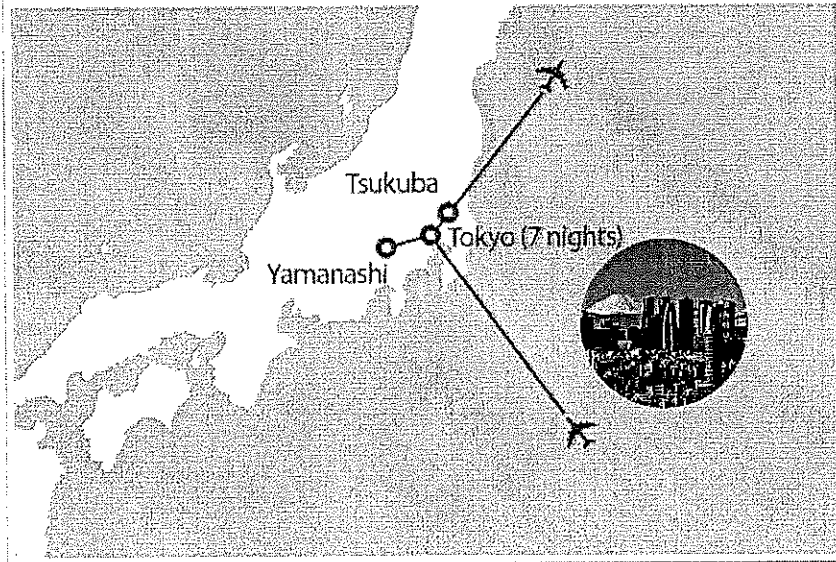
Students can earn 0.5 high school credits (included) or 3 college credits (for a small fee) by doing additional project work related to their tour experience.



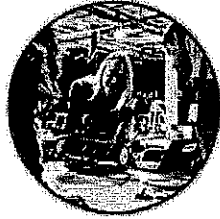
College essay help

EF's college essay guide helps students use their tour as inspiration for a personal essay that admissions officers can't resist.

Robotics, Engineering, and the Future of Cities in Japan

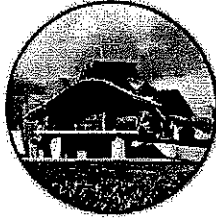


Our EF STEM experience



Experiential learning

We will apply STEM principles by participating in project-based learning that goes well beyond theory



Innovative locations

We will tour exciting destinations that host some of the world's most advanced laboratories, universities, and companies, or are simply perfect global "classrooms" to study scientific issues of the day in real life



Industry experts

We will collaborate and learn with scientists, engineers, researchers, and other STEM practitioners in the field

Tokyo & Tsukuba

Days 1-4



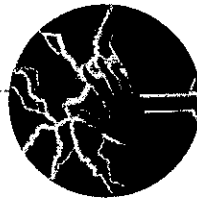
Fly overnight to Japan & meet your Tour Director at the airport



Tour Tokyo with a STEM expert



Ascend Tokyo Skytree



Visit the Miraikan Science Museum



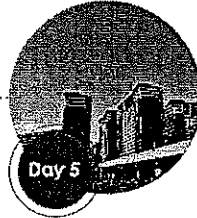
Take a guided tour of the Rinkai Disaster Prevention Park



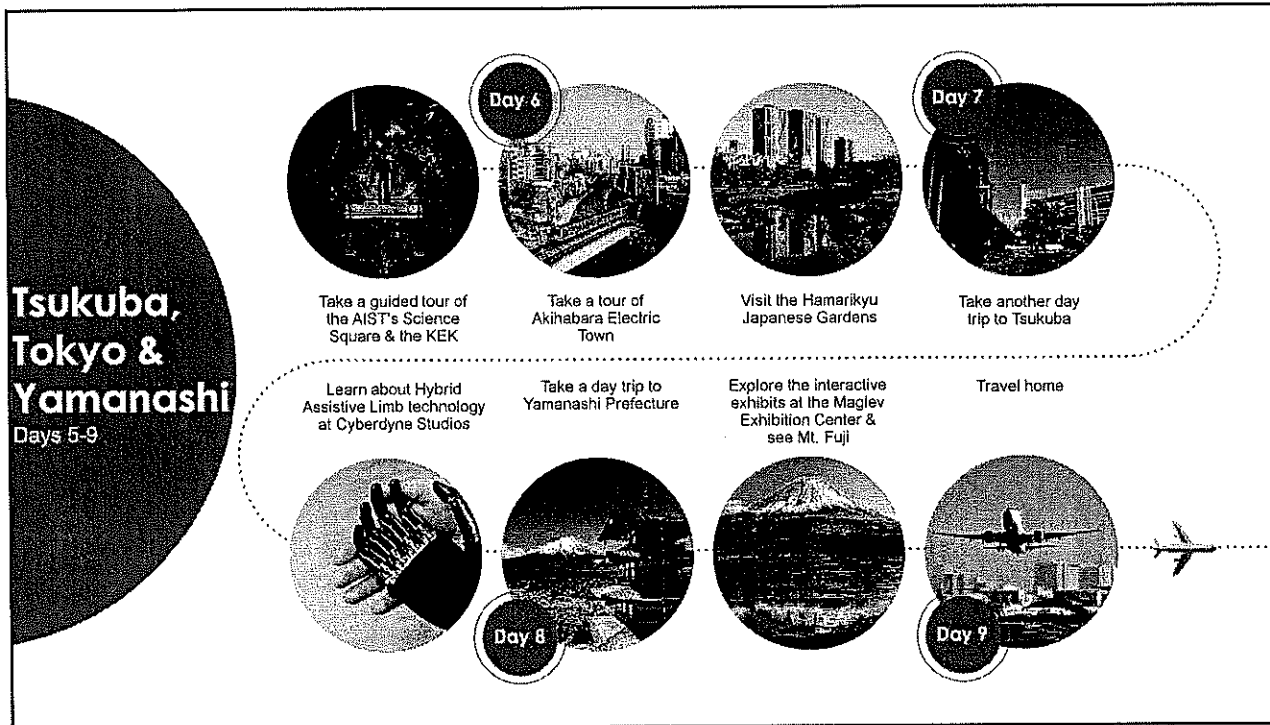
Visit the Kawasaki Toshiba Museum



Participate in an authentic Japanese cooking class

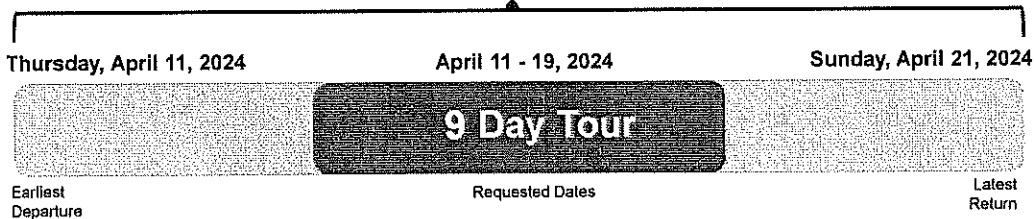


Travel on a day-trip to Tsukuba, Japan's "Science City"



Our Travel Dates

Block off your calendars from the earliest departure to the latest return



- ✈ Our flexibility with these dates will help EF create the best on-the-ground experience for us
- ✈ We will receive our final date range 2-3 months before tour
- ✈ Our group could be combined with another school, requesting similar dates and destinations, which will be a great opportunity to meet students from another part of the country

What's included in our itinerary



Round-trip airfare on major airline carriers



Hotel stays at quality, clean accommodations



Regional-style meals for breakfast and dinner



Tour Director who will be with us 24/7



Transportation on tour, including a comfortable motorcoach bus



Expert local guides providing cultural insight



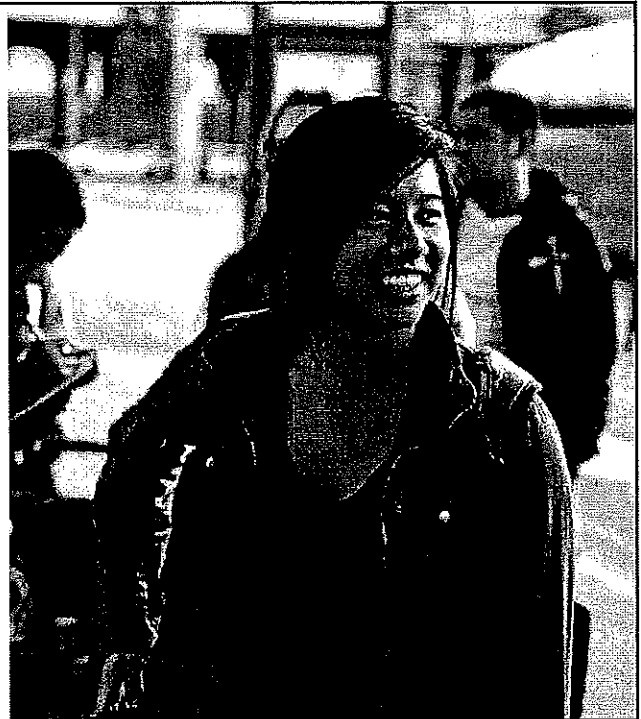
Guided sightseeing of all our destination has to offer



Hands-on STEM learning with industry-leading experts & organizations

What travelers are responsible for

- Passports (and visas, if applicable)
- Baggage fees
- Tips for local guides, bus drivers and your Tour Director
- Snacks and some meals



Pricing

Program Price** \$4,888

Includes:

- Round-trip airfare and on tour transportation
- Hotels with private bathrooms
- Breakfast and dinner (see your Itinerary for meal details)
- Full-time Tour Director
- Daily activities, tours and entrances to attractions

Tokyo Karaoke \$40

EF's Peace of Mind Program* Free

Total for Students (under 20) \$4,929

13 monthly payments \$372/mo

Adult Supplement* \$500

Total for Adults \$5,519

13 monthly payments \$419/mo

Circle created on 3/14/2023

**Program price valid for today. Change and cancellation fees of up to the total price will apply. Applicable airline baggage fees are not included and can be found at [ef.com/airlinebaggage](#). All prices subject to verification by an EF Tour Consultant. To view EF's Booking Conditions, visit [ef.com/booking](#). Some destinations may require aircraft reservation commitment for inbound foreign flights. Such destinations can be found at [ef.com/booking](#).

*Adult supplement required for travelers age 26 and older at the time of travel.

**We understand that plans sometimes change due to unforeseen circumstances. EF's Peace of Mind Program offers your entire group to change your tour or departure date. Your group can feel better planning your trip, knowing that your plans are flexible.

Itinerary shown is for 2024 travel. Itineraries are subject to change. Alternatively, please call for more details.

**Travel. Impact. People.
Inspiration. New ideas.
Guides. Stories. Tips.**



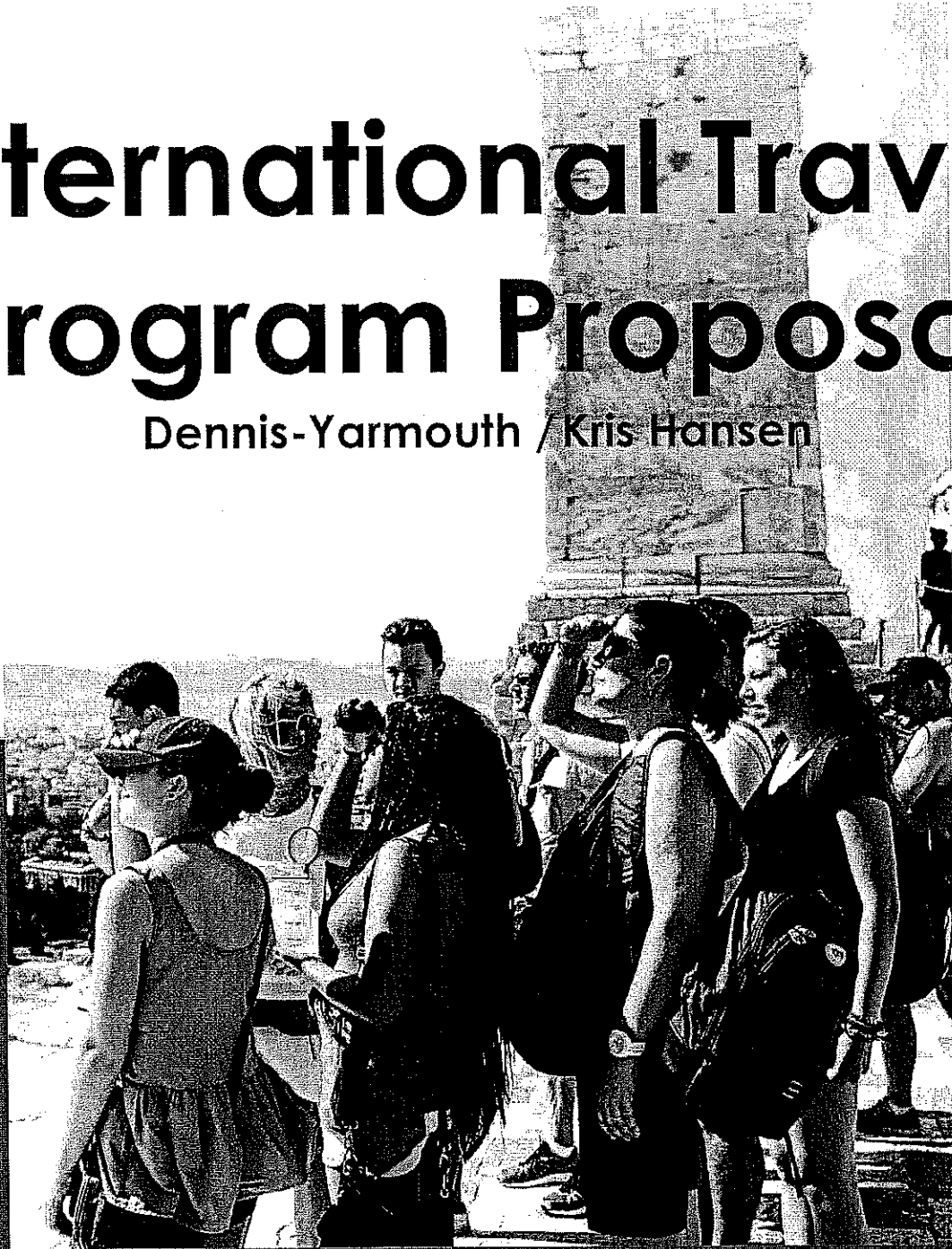
EDUCATIONAL
TOURS



EDUCATIONAL
TOURS

International Travel Program Proposal

Dennis-Yarmouth / Kris Hansen



**Robotics, Engineering, & the Future of Cities in Japan -
April Break 2024**

eftours.com/STJ

Your partner in travel-based learning

EF Education First is the world leader in international education. For over 55 years, we've partnered with educators around the world to help more than 15 million students gain new perspectives and build skills for the future through experiential learning.

Our mission is to empower educators to do their best work. At EF Educational Tours, we're working to define the modern educational tour experience. Our itineraries are more than places to go and things to see. We build programs that challenge assumptions, spark connections, and inspire curiosity in young students. Students will expand their knowledge of the world around them, discover more about themselves, grow more confident and independent, and understand new people, places, and cultures.

We take care of every last detail of the tour experience—transportation and lodging, meal reservations and menus, museum tickets and local tour guides, and much more. That also includes behind-the-scenes elements, like safety checks at hotels and background checks on adult travelers. With all that taken care of, educators and students can focus on the bigger picture.

You'll find all the details and more on the next few pages.

What's contained in this document

- Pg. 2 **Safety**
- Pg. 4 **Liability protection**
- Pg. 6 **Affordability**
- Pg. 7 **Educational value**
- Pg. 8 **Itinerary specifics**
- Pg. 8 **Cost and payment options**
- Pg. 9 **Sample hotels**
- Pg. 10 **Sample meals**

This proposal is property of EF Education First and the educator/school for which it was intended. Distributing, copying, and/or sharing it are prohibited. The proposal, including pricing, is valid for the educator, tour, and date(s) specifically mentioned herein. For additions, subtractions, or modifications, please contact your EF Tour Consultant.

© 2021 EF Education First. For full terms and Booking Conditions visit [eftours.com/bc](https://www.efeducation.com/ef-tours-booking-conditions)

Safety

Your students' safety is our number one priority. We would never send a traveler to a location we believe to be unsafe—and with our extensive global presence, our best-in-the-industry experience, and our close working relationships with U.S. and international authorities, that's a statement we can back up with real insight. Whether it's a worldwide pandemic or a sprained ankle, a missed flight or confusing medical paperwork, we make sure every situation is taken care of.

***For specific information on EF's response to COVID-19, visit [eftours.com/covid](https://www.eftours.com/covid)**

Worldwide presence

EF's global presence is truly unmatched. We have staff on the ground 365 days a year in over 50 countries. And we don't just work in those countries—we call them home. EF team members live in nearly every one of our tour destinations, meaning we have the local knowledge to help keep our groups safe. That presence allows us to be there to support you on the ground wherever and whenever you need us.

24/7 emergency support

In the event that anything on tour goes wrong, EF staff is always available to help. Your Tour Director is your group's constant companion and first point of contact in an emergency. Additionally, our fully trained support teams are on hand 24/7 to walk teachers through any issues and provide the resources necessary to get things back on track. Our Safety and Incident Response Team—comprised of industry experts, healthcare experts, and even former FBI personnel—is ready to spring into action 24 hours a day, 365 days a year. And when they aren't directly helping EF travelers, they're actively innovating on and shaping the new worldwide standards for cleanliness and safety.

Your team

This group is fully committed to your school's trip and the safety of every traveler.

Operations Safety & Incident Response

Team – This team is strategically based in our Boston, Panama, Tokyo, and Zurich offices to accommodate for all time zones. Available 24 hours a day, every day of the year, they are trained to react quickly if travelers need help. The team uses a combination of extensive training, simulations, incident response planning, and previous experience to manage emergencies. As needed, they can facilitate additional support for groups on tour, solve operational issues, arrange assistance from outside specialists, and liaise with local and international authorities.

Emergency Services & Support Team

Our support team is available 24/7 to help resolve any issue, from a missed flight to a lost passport to more serious on-tour incidents. They also facilitate communication between travelers and families in the event of an emergency at home. The team is made up of highly trained and dedicated EF staff in our Boston and Denver offices who are equipped to solve problems and answer questions that may come up, even outside of regular business hours.

Tour Director – Assigned exclusively to your tour for the length of the stay at your destination, your Tour Director meets your group at the airport and travels with you until your departure. All Tour Directors undergo a background check as permissible by local law every two years and are required to participate in ongoing EF safety trainings. They're the first point of contact in an emergency and also communicate information to help travelers stay safe in a foreign destination. Tour Directors assist Group Leaders with hotel check-ins, coordinate meals, facilitate excursions with local guides, and much more. They're also culturally connected and expertly trained to support impactful learning experiences.

Tour Consultant – This itinerary expert is devoted to the growth of your students. They are your school's partner, working with you on everything from finding the perfect tour and enrolling students to offering fundraising advice and creating long-term travel programs for your school community. They work directly alongside the Group Leader (a.k.a. local teacher), right up until the moment of departure to make sure everything goes smoothly.

Traveler Support – Our team of support specialists are readily available to walk families through insurance inquiries, payment plans, food allergy issues, and any other topics that arise.

Chaperones – For every six travelers who enroll on your school's tour, your group is eligible to bring along a chaperone for free (the first spot goes to the Group Leader). This allows for a 6:1 ratio of students to chaperones, who assist Group Leaders with supervision of students to help keep them safe.

Protection for travelers, schools, and districts

We understand that unpredictable things can happen, either on tour or before departure. We offer a variety of protections, programs, and policies to make sure that, no matter what happens, travelers, schools, and districts are covered. We're doing everything we can to make planning for the future as flexible as possible.

General liability insurance

All Group Leaders, schools, and districts who travel with EF are automatically added as additional insureds under our **\$50 million General Liability Policy**, regardless of whether or not the tour is affiliated with the school. EF's liability coverage is primary and non-contributory for covered third-party claims. The policy helps safeguard Group Leaders and their schools for covered third-party claims related to bodily injury or property damage, which includes providing a legal defense and covering legal costs for such claims. In addition, all travelers are required to sign EF's Release and Agreement, which includes a release of liability of their Group Leader, school, and school board.

Flexibility to change tours

The world is always changing. And while our belief in the positive impact of travel is unwavering, it can feel hard to predict what life, here in the U.S. and abroad, will look like several months, a year, or even two years from now. When you decide to travel with EF, we want you to feel secure in that decision. That's why these benefits are built into every EF program.

Peace of Mind

Provided to all groups

We understand that plans can change due to unforeseen circumstances. EF provides this exclusive program to account for such situations. It provides groups with flexibility to change the dates and destination of their tours in uncertain times. This program accounts for such circumstances and can be enacted up to 45 days prior to departure at the group level for any reason, including terrorism or other world events.

COVID Care Promise

Provided to all groups

If your child is diagnosed with COVID-19 while on tour, we will coordinate and facilitate support services and logistics including translation services, connections with local health care providers, communication with family, and flights home at no additional cost.

Protection for individual travelers

Travelers can help protect their investment and themselves from certain unexpected events and expenses while on tour with the Global Travel Protection Plan and Global Travel Protection Plan Plus.

Global Travel Protection Plan

Available to all travelers

Designed specifically with EF travelers in mind, this plan provides both pre-departure and post-departure benefits, including medical expense coverage that may apply on tour and tour cancellation for specified reasons.

Global Travel Protection Plan Plus

Available to all travelers

To further protect your investment from the unexpected, this plan provides all of the benefits included in the Global Travel Protection Plan as well as expanded cancellation protection.

Background checks for adult travelers

EF requires all adults (20 years and older) to pass a criminal background check before traveling on our student tours. This provides a safer tour experience for all travelers and aligns with the process and expectations of many school districts for adults who volunteer in schools or chaperone school activities. The secure process, provided by a leading professional provider, only identifies those individuals who could present a risk to student travelers while on tour.

Affordability

We believe every student should have the opportunity to travel. That's why we're dedicated to providing the lowest prices possible and giving travelers multiple resources for managing payments.

Tour Consultants work closely with teachers to build a tour that's exactly right for your students. Through discussions with your teacher, they take into account learning objectives, cost, timing considerations, and any other factors to craft a tour that's accessible to as many students as possible.

Resources for managing cost and payments

Automatic Payment Plan – Our recommended payment plan offers the ability to break the tour fee into smaller installments. With most tours planned well in advance, travelers can enroll for only \$95, then pay over a long period of time—often up to 18 months or two years—with final payment due 30 days before departure. Families make payments directly to EF, with no payments going through the school.

Donation pages – Each student has access to their own unique and customizable donation page. The easy-to-share page makes it simple for friends and family to contribute a little something that is automatically applied to the balance of the tour, with no fees whatsoever.

Global Citizen Scholarship Fund – EF Educational Tours provides \$100,000 worth of scholarships to students across the country every year. Any student is able to apply for the Global Citizen Scholarship, which is awarded on both a merit and need basis.

Educational value

Our tours help prepare students for the future by teaching them more about the world, themselves, and the impact they can have on the world. Combining the power of experiential learning with the thrill of global travel, our tours help students:

- Expand their knowledge of the world around them
- Grow more confident and independent
- Understand new people, places, and cultures
- Discover more about themselves

To learn more about EF's educational philosophy, visit <https://www.eftours.com/our-story/educational-approach>

EF is an accredited institution

We echo your commitment to education. Our travel-based learning approach is designed to blend classroom and experiential learning. This allows us to meet the same rigorous standards as schools like yours, ensuring students gain valuable experiences that transform the way they look at the world.



Earning credit for new experiences

EF makes it easy for students to turn their tour experience into high school credit, college credit, or to get a head start on their college essays—all while making their travel experience even more engaging.

- Students in grades 6 - 12 can earn .5 elective high school credit by successfully completing the final project as part of EF's Personalized Learning Guide. Tuition is free.
- Students in grades 9 - 12 can earn 3.0 undergraduate credits, along with the confidence that comes with taking a college course, by completing a series of assignments and a final research project with our partner, Southern New Hampshire University—all for just \$215.
- Educators traveling on student tours may earn up to 45 free hours toward relicensure OR 3 or 6 graduate level credits (\$285/\$450) through Southern New Hampshire University.

Itinerary specifics

For more robust details, the complete itinerary is attached to this document. It includes specific locations, each day's activities, travel plans, and more.

Price of the proposed tour

The tour program price covers a wide range of services that ensure students have an incredible experience. It includes all the planning and preparation that leads up to departure, travel and accommodations, plus logistical support and details once the group reaches their destination.

Full proposed travel date range: April 11-21, 2024

Requested travel dates: April 11-19

Program Price* *	\$4,889	Quote created on 3/29/2023
Includes:		
<ul style="list-style-type: none"> • Round-trip airfare and on tour transportation • Hotels with private bathrooms • Breakfast and dinner (see your itinerary for meal details) • Full-time Tour Director • Daily activities, tours and entrances to attractions 		<p>* Program price valid for today. Change and cancellation fees of up to the total price will apply. Applicable airline baggage fees are not included and can be found at eflours.com/baggage. All prices subject to verification by an EF Tour Consultant. To view EF's Booking Conditions, visit eflours.com/bc. Some destinations may require aircraft insecticide treatment for in-bound foreign flights. Such destinations can be found at eflours.com/insecticide.</p>
Tokyo Karaoke	\$40	
EF's Peace of Mind Program *	Free	** Adult supplement required for travelers age 20 and older at the time of travel.
Total for Students (under 20)	\$4,929	* We understand that plans sometimes change due to unforeseen circumstances. EF's Peace of Mind Program allows your entire group to change your tour or departure date. Your group can feel secure planning your trip, knowing that your plans are flexible.
13 monthly payments	\$372/mo	Itinerary shown is for 2024 travel. Itineraries are subject to change biannually; please call for more details
<hr/>		
Adult Supplement **	\$590	
Total for Adults	\$5,519	
13 monthly payments	\$418/mo	

Sample hotel

Every hotel we work with must meet our high standards for safety, quality, and cleanliness. Hotels are vetted by our team to make sure they meet our requirements and are subsequently inspected regularly to ensure they continue to satisfy those parameters. Please note that hotels abroad may have different amenities than travelers are accustomed to in the United States.

Here is an example of a hotel students might stay in on tour:

Pearl Hotel Ryogoku | Toyko

www.pearlhotels.jp

Pearl Hotel Ryogoku is conveniently located across from Ryogoku Station, which allows groups to explore the vast city of Tokyo with ease. Guests are roomed in twin accommodations or in multi-bed suites. Each room has recently been renovated and includes a TV, telephone, air conditioning, and a hair dryer.

Sample meals

Meals are selected to establish a more immersive cultural experience and give students an idea of how locals eat. Below are some examples of local dishes travelers may try at the destination that your teacher has chosen, but please note that meals can vary from tour to tour.

On tour, breakfast generally is simple and will be at the hotel; it could be plated or buffet-style. Lunch typically is your chance to make culinary discoveries of your own. Dinners will be a mix of familiar dishes and local specialties. All meals will be a mix of familiar dishes and local specialties all served from a pre-set group menu.



Japan: Sample Meals

Rice, soup or salad, hamburger with one side dish

Chicken, vegetables, mushrooms, tofu, noodles

Tempura vegetables, mushrooms, shrimp, fish, potatoes, eggplant and rice

Beef, seafood, tofu, rice and soup



Dennis-Yarmouth Regional School District

296 Station Avenue, South Yarmouth, MA 02664

David M. Flynn

Assistant Superintendent for Finance and Operations

Phone: (508) 398-7600 Fax: (508) 398-7622

ENC. 2 E1

DATE: March 29 2023

TO: Carol Woodbury, Superintendent of Schools
Dennis-Yarmouth Regional School Committee

RE: MSBA Statement of Interest for M.E. Small Elementary School 2023

The District has previously submitted multiple Statements of Interest to the MSBA for the Marguerite E. Small Elementary School. M.E. Small continues to need major renovations and I recommend the School Committee vote to approve the submission of the Statement of Interest for Marguerite E. Small Elementary School for the 2023 cycle. The required MSBA vote language is listed below.

Motion:

Resolved: Having convened in an open meeting on April 3, 2023, prior to the SOI submission closing date, the Dennis-Yarmouth Regional School Committee, in accordance with its charter, by-laws, and ordinances, has voted to authorize the Superintendent to submit to the Massachusetts School Building Authority the Statement of Interest Form dated no later than April 14, 2023 for the Marguerite E. Small Elementary School located at 440 Higgins Crowell Road, West Yarmouth, MA 02673 which describes and explains the following deficiencies and the priority category(s) for which an application may be submitted to the Massachusetts School Building Authority in the future.

Category 5: Replacement, renovation or modernization of school facility systems, such as roofs, windows, boilers, heating and ventilation systems, to increase energy conservation and decrease energy related costs in a school facility. The Marguerite E. Small Elementary School needs significant renovation work in all major systems. The building's exterior components including roofs, doors, windows, and masonry have all been cited as high-priority issues. The 2014 facilities audit and the updated study in February 2020 by Bureau Veritas identified the same issues along with possible structural settlement of the loading dock, interior air quality issues, leaking sanitary and heat piping, and the presence of asbestos containing materials. Additionally, the building lacks fire suppression and has multiple ADA requirement issues.

Category 7: Replacement of or addition to obsolete buildings in order to provide for a full range of programs consistent with state and approved local requirements. Current capacity is reasonable, however classroom layouts and floor plans with a size of about 900 square feet limit the kinds of educational activities that would reflect best practices for the grades and specialized services that must be provided within this school;

and hereby further specifically acknowledges that by submitting this Statement of Interest Form, the Massachusetts School Building Authority in no way guarantees the acceptance or the approval of an application, the awarding of a grant or any other funding commitment from the Massachusetts School Building Authority, or commits the Dennis-Yarmouth Regional School District to filing an application for funding with the Massachusetts School Building Authority.

DMF



NAUSET REGIONAL MIDDLE SCHOOL

"...a safe, respectful and nurturing environment which promotes academic excellence and self-esteem"

BETH DENEEN | INTERIM PRINCIPAL
WILLIAM SHEEHAN | ASSISTANT PRINCIPAL
SEAN FLEMING | ASSISTANT PRINCIPAL

March 23, 2023

Michael Bovino
Dennis-Yarmouth Middle School
286 Station Ave.
South Yarmouth, MA 02664

Dear Michael Bovino,

I had the pleasure of hosting the All-Cape Junior High Band Workshop on Wednesday, March 22. Several students from your school attended this event along with their teacher, Scott Graf.

I wanted to let you know that these students were outstanding. They are a credit to your school and to your Band Program. Their exceptional behavior contributed to the success of our day.

Thank you for your school's participation.

Sincerely,

Megan Anthony
Director of Bands
Nauset Regional Middle School

cc: Scott Graf

ENC. 3 B

DENNIS-YARMOUTH REGIONAL SCHOOL DISTRICT
Minutes of a School Committee Meeting
Monday, March 20, 2023

A Dennis-Yarmouth Regional School Committee meeting was held on Monday, March 20, 2023, at the Dennis-Yarmouth Regional High School Library in South Yarmouth, Massachusetts.

Members Present: Joseph Tierney, Chairperson; Jeni Landers, Vice Chairperson; Jennifer Rose, Secretary; Tomas Tolentino, Treasurer; Phillip Morris; Marilyn Bemis; Joe Glynn; Student Representative Kristen Stagg; Student Representative Rose-Anna Joachim.

Others Present: Carol Woodbury, Superintendent of Schools; David Flynn, Assistant Superintendent for Finance and Operations; Maria Lopes, Assistant Superintendent of Student Services and Instruction; Eileen Whalen, Recording Secretary to the School Committee; Sherry Santini, Director of Humanities and the Arts; Betsy Pontius, Director of STEM; Brenda Burke, Assistant Director of Student Services; Kelly Mooney, Assistant Director of Student Services; Michelle Dunn, DYEA; Sarah Manion; Stephanie Goley.

At 6:34 p.m., Joseph Tierney, Chairperson, called the meeting to order.

Reports:

A. Student Representative Reports – Kristen Stagg and Rose-Anna Joachim

Kristen reported on the latest news from the high school. Auditions for *Chicago the Musical* continue; the Gershwin concert was wonderful and because of Dolphin Time there were three performances instead of the usual two. Rose-Anna reported that the Food Festival was a standing room only event in the cafeteria with many foods from different cultures. There was an AP Fair recently where prospective students could sign up to shadow an AP student in class. She also reported that Dennis-Yarmouth's Breanna Braham broke the Indoor and Outdoor open 200 Meter record and she ran a 25.78 at the New Balance Indoor Nationals.

B. Superintendent Report – Carol Woodbury

Mrs. Woodbury began her report by sharing that the Dennis-Yarmouth Unified Weight Lifting team placed second. She then introduced Sarah Manion and Stephanie Goley.

Calmer Choice Presentation – Sarah Manion and Stephanie Goley

Sarah Manion, Co-Executive Director and Stephanie Goley, Mindfulness Coach, gave a presentation on the Calmer Choice Program. The presentation was followed by questions from the School Committee. Mr. Glynn asked if there might be an opportunity to study results. Mr. Morris is very appreciative of both the program and the presentation. Mr. Tierney thanked Sarah and Stephanie for their very informative presentation.

C. School Building Committee Report – Joseph Tierney

Mr. Tierney said that the weekly meetings are continuing; all is going well. Mrs. Woodbury said the ribbon cutting ceremony will take place on May 6th at 10:30 a.m. Mr. Flynn said the auditorium seats should be finished about a week and a half prior to the ribbon cutting. The ribbon cutting will be open to everyone.

D. School Committee Liaisons to the Boards of Selectmen

Dennis: Jeni Landers said the Dennis Select Board voted to send a letter to the School Committee regarding cutting the budget.

Yarmouth: Joe Glynn said that the school budget will be on the select board's agenda for Tuesday evening.

E. Assistant Superintendent Report – David Flynn
FY2024 Budget

Mr. Flynn presented the FY2024 Budget. He reviewed the Foundation Budget; Required Spending; Municipal Revenue Growth Factor; Required Spending Calculation; Property Wealth and Income; and Local Assessments. Mr. Flynn's presentation was followed by questions and answers from the committee. The Excess and Deficiency fund has not been certified. Mr. Flynn does not think that using the Excess and Deficiency funds is good practice. Ms. Bemis asked what E & D funds are used for. Mr. Flynn said that in the past the school committee has voted that the funds be used for the OPEB fund; and also for making the first interest payment on the new school. Mr. Glynn added that using the E & D funds toward OPEB saved the town's money by improving the school district's bond rating. Mrs. Woodbury said that the district used to be overly reliant on Excess and Deficiency. She also said that they have done their due diligence going through the budget to find reductions. Chair Tierney said that the new school operating costs are an unknown at this time.

School Committee Business

A. Superintendent Search

Chair Tierney said he has reached out to the Massachusetts Association of School Committees (MASC) who will guide and provide technical assistance to the school committee in their superintendent search.

Jeni Landers moved that the School Committee create a superintendent search committee for the purpose of advertising the vacancy, screening and interviewing initial candidates, and proposing final candidate(s) to the School Committee for vetting and hiring and all relevant purposes thereto. And that the membership of that search committee shall include the school committee chair, the school committee vice chair, and one other school committee member; three parents (one elementary, one DYIMS, one high school); one principal; one teacher; one administrator; and one non-teacher staff member and that the chair be empowered to make the appointments to the search committee after seeking letters of interest. Joe Glynn seconded and discussion ensued. Mr. Tierney said that there will be an expedited timeline and those who wish to be a part of the search committee should be available and able to commit to a lot of meetings. Upon seeing no further discussion, Chair Tierney called for a roll call vote on the motion. The motion carries unanimously, 7-0.

Phillip Morris	yes
Marilyn Bemis	yes
Tomas Tolentino	yes
Joe Glynn	yes
Jeni Landers	yes
Jennifer Rose	yes
Joseph Tierney	yes

Consent Agenda

On a motion by Jeni Landers, seconded by Phillip Morris, and carried 7-0, it was

VOTED: To approve the following items as presented in the Consent Agenda:

Donations:

Move to accept a donation in the amount of \$1,054,679.49 from the Estate of Irene M. McInnis to the DYRSD Scholarship Fund.

Minutes

March 6, 2023

Bills, Requisitions, and Payroll

Bills, requisitions, and payroll were signed by the School Committee.

Calendars

The upcoming calendars were included in the packet.

Items Distributed at Meeting

March 15, 2023 Letter from Chris Lambton, Dennis Select Board Chair
Calmer Choice Presentation
FY2024 Budget Presentation

Public Comment

None

Adjournment

At 8:20 p.m., on a motion by Jeni Landers, seconded by Phillip Morris, and carried unanimously 7-0; it was

VOTED: To adjourn the meeting.

Minutes recorded and prepared by,

Eileen M. Whalen, Assistant Secretary

April 2023

March '23

May '23

S	M	T	W	T	F	S	S	M	T	W	T	F	S
5	6	7	8	9	10	11	1	2	3	4	5	6	
12	13	14	15	16	17	18	7	8	9	10	11	12	13
19	20	21	22	23	24	25	14	15	16	17	18	19	20
26	27	28	29	30	31		21	22	23	24	25	26	27
							28	29	30	31			

Sunday	Monday	Tuesday	Wednesday	Thursday	Friday	Saturday
26	27	28	29	30	31	1
2	3 SC Meeting 6:30	4	5	6	7 Good Friday No School	8
9	10 SC Meeting 6:30	11	12	13	14	15
16	17 April Vacation	18	19	20	21	22
23	24 April Vacation	25	26	27	28	29
30	1 Notes					

May 2023

June '23

S M T W T F S
 4 5 6 7 8 9 10
 11 12 13 14 15 16 17
 18 19 20 21 22 23 24
 25 26 27 28 29 30

April '23

S M T W T F S
 2 3 4 5 6 7 8
 9 10 11 12 13 14 15
 16 17 18 19 20 21 22
 23 24 25 26 27 28 29
 30

Sunday	Monday	Tuesday	Wednesday	Thursday	Friday	Saturday
30	1 SC Meeting 6:30	2	3	4	5	6 Ribbon Cutting DYIMS 10:30
7	8	9	10	11	12	13
14	15 SC Meeting 6:30	16	17	18	19	20
21	22	23	24	25	26	27
28	29 Memorial Day	30	31 1.5 hour early release all grades	1	2	3
4	5 Notes					

June 2023

May '23

S M T W T F S
 1 2 3 4 5 6
 7 8 9 10 11 12 13
 14 15 16 17 18 19 20
 21 22 23 24 25 26 27
 28 29 30 31

July '23

S M T W T F S
 2 3 4 5 6 7 8
 9 10 11 12 13 14 15
 16 17 18 19 20 21 22
 23 24 25 26 27 28 29
 30 31

Sunday	Monday	Tuesday	Wednesday	Thursday	Friday	Saturday
28	29	30	31	1	2	3
4	5	6	7	8	9	10
11	12	13	14	15	16	17
	SC Meeting 6:30					Graduation Day 10:00 a.m.
18	19	20	21	22	23	24
	Juneteenth Holiday No School					
25	26	27	28	29	30	1
	SC Meeting 6:30			Last Day of School Including 5 Snow Days		
2	3	Notes				