



# DENNIS-YARMOUTH SCHOOL PROJECT

THE DYIMS SCHOOL BUILDING  
COMMITTEE

February 23, 2023

# AGENDA

Mattacheese School Building Committee Agenda  
Thursday, February 23, 2023  
4:30 P.M.

## Mattacheese Middle School Project

### Estimated Time Frame

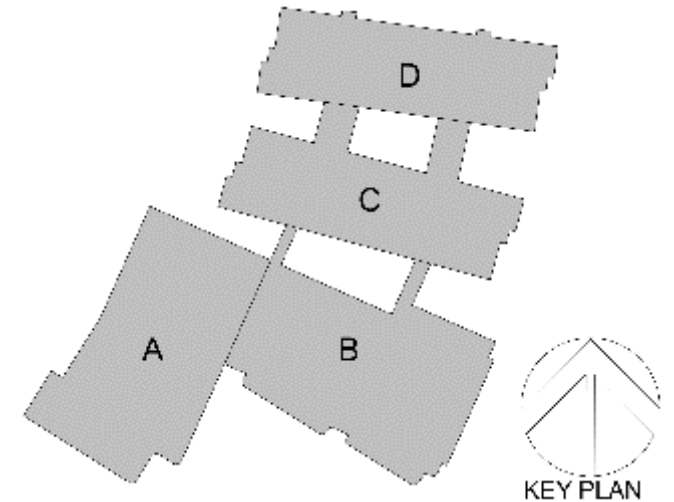
- |              |   |           |
|--------------|---|-----------|
| <b>I.</b>    | <b>Chair Joseph Tierney</b><br>Call to Order  | 4:30 P.M. |
| <b>II.</b>   | <b>Approval of Prior Meeting Minutes</b><br>Discussion<br>Motion and Second Needed<br>Vote to Approve   | 4:30 P.M. |
| <b>III.</b>  | <b>Overview of Meeting Agenda</b><br>Joe Tierney – SBC Chair  | 4:35 P.M. |
| <b>IV.</b>   | <b>Construction Update</b><br>a. Progress Photos<br>b. Progress Update<br>c. Lookahead Schedule   | 4:35 P.M. |
| <b>V.</b>    | <b>Design Update</b><br>a. Status Update  | 4:45 P.M. |
| <b>VI.</b>   | <b>FFE/IT Update</b><br>a. Status Update  | 5:00 P.M. |
| <b>VII.</b>  | <b>Project Budget &amp; Cashflow</b><br>a. Cashflow Update<br>b. Change Authorization Overview<br>i. VOTE (if required): on any discretionary changes in excess of \$25k not previously authorized. | 5:25 P.M. |
| <b>VIII.</b> | <b>New Business</b>   | 5:35 P.M. |
| <b>IX.</b>   | <b>Meeting Adjournment</b>  | 5:35 P.M. |



# FEBRUARY CONSTRUCTION UPDATE

## January/February Activities

- **Temp Certificate of Occupancy received (2/16/23)**
- Punchlist ongoing for entire building
- IT dept setting up teacher computers
- FFE/IT equipment delivered and installed
- Gym basketball hoops moved and line striping complete
- Owner trainings ongoing
- Traffic light cameras installed and programmed
- Commission ongoing
- Auditorium curtains and lighting installed



# CONSTRUCTION PROGRESS PHOTOS



Library seating and shelving

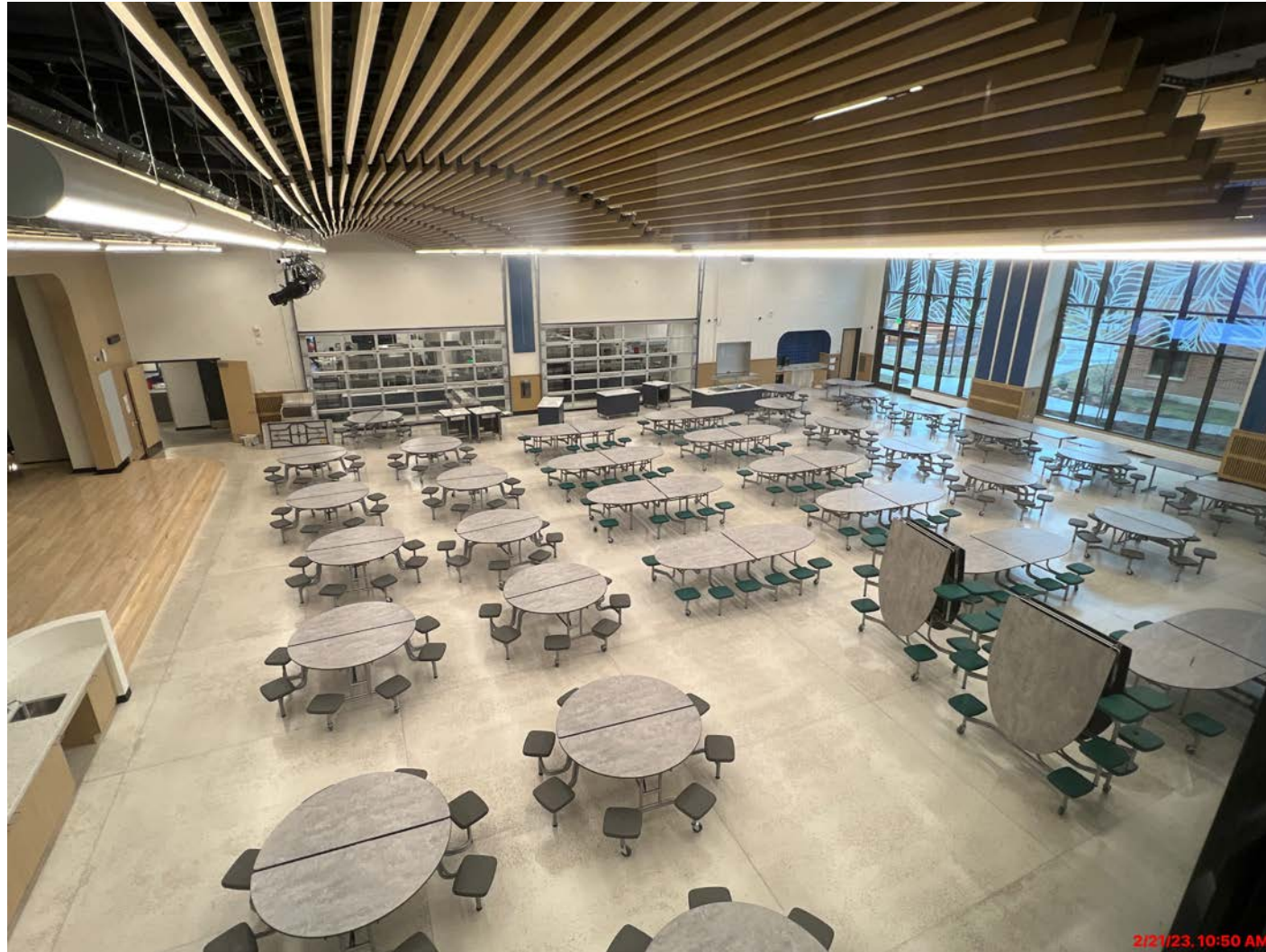


# CONSTRUCTION PROGRESS PHOTOS



Cafetorium FFE installed

# CONSTRUCTION PROGRESS PHOTOS



Cafetorium from above



# CONSTRUCTION PROGRESS PHOTOS



Gym basketball hoops moved and final coat applied to the floor

# CONSTRUCTION PROGRESS PHOTOS



D wing science classroom



# CONSTRUCTION PROGRESS PHOTOS

Wall graphics in D wing



# CONSTRUCTION PROGRESS PHOTOS



Art room FFE installed

# CONSTRUCTION PROGRESS PHOTOS



Piano lab set up



# CONSTRUCTION PROGRESS PHOTOS



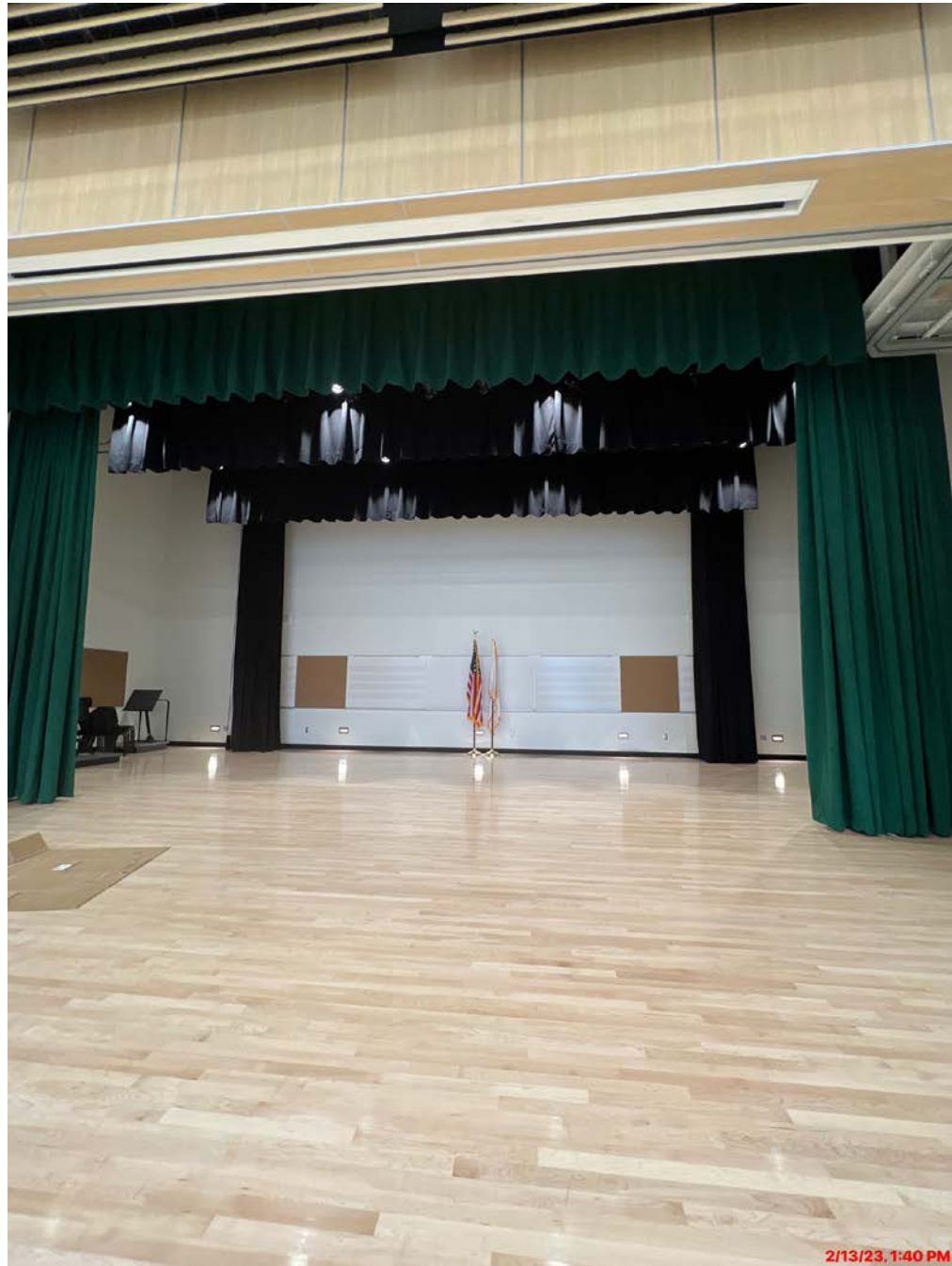
Music Classroom set up

# CONSTRUCTION PROGRESS PHOTOS



Main lobby furniture and wall graphics

# CONSTRUCTION PROGRESS PHOTOS



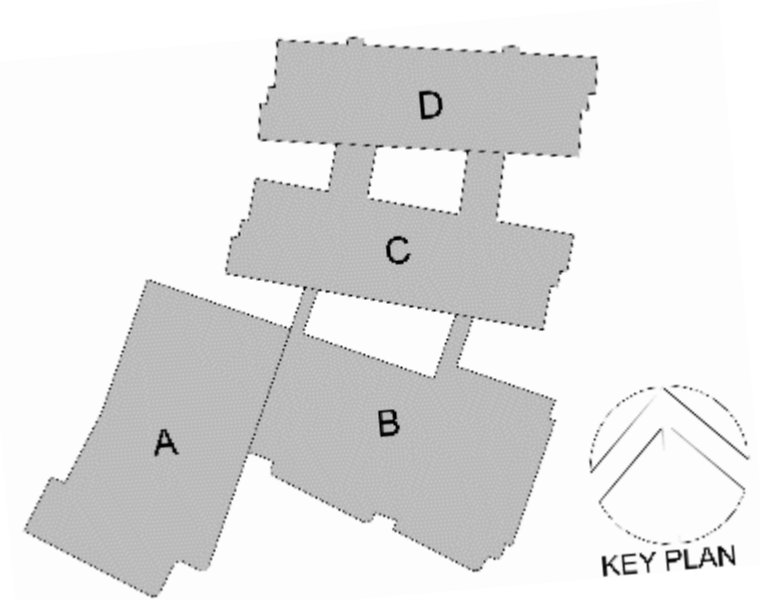
Cafetorium stage and rigging set up



# CONSTRUCTION UPDATE

## LOOKAHEAD SCHEDULE

- Work to complete list
  - Punchlist work
  - Finish commissioning
  - Owner training
- Teachers coming back (2/27-2/28)
  - First day of school (3/1/2023)



# CHANGE MANAGEMENT AUTHORIZATION

## COR #153.1 (OPTION 1)

TYPE OF BUILDING		
Construction Type		
MVR WOOD	Wood Framed walls above cap beam, and wood framed rafters [ceiling & vents same as MVR]	
FLOOR SYSTEM		
ROOM/ITEM	FINISH	
Entire Building	Exposed Concrete with Light Broom Finish with Integral Additive for Stain/Moisture Resistance	
Entire Building	Floor Coating with Skid Resistant Additive - Flakes	
Footings/Foundation	Provide Steel Angle Tie Downs	
WALL SYSTEM		
BUILDING WALLS HEIGHT		
Building Walls Height		7'4"
EXTERIOR WALLS - CMU	BLOCK TYPE AND COLOR	ROWS
Split Face Exterior 4" CMU	Split Face Gray	All
CAP BEAM		
Cap Beam	Cap Beam, Steel Tube, Painted	
WALL FINISHES - EXTERIOR		
TYPE	FINISH	HEIGHT
CMU	Paint over block filler	To Cap Beam
FRC Siding -Above- Cap Beam	FRC Stucco Pattern-James Hardie - Painted	Above Cap Beam
Exterior Paint	PPG Exterior Gloss - Colors TBD by client	
WALL FINISHES - INTERIOR		
ROOM	FINISH	HEIGHT
Restrooms Below Cap Beam	Block filler & paint	To Cap Beam
Restrooms - Above Cap Beam	Stucco Pattern FRC - Painted	Above Cap Beam
Mechanical - To Cap Beam	Block filler & paint	Above Cap Beam
Mechanical - Above Cap Beam	Painted OSB	Above Cap Beam
ROOF SYSTEM		
ITEM	DESCRIPTION	
Metal Sales Image II 26 GA	26 GA SSM, Metal Sales Image II Standing Seam With 12" Striations W/Ice & Water	
Entire Building Ceiling	(MVR) 5/16" Cement Board Stucco Pattern Over 5/8" OSB	
Fascia	14/16 Ga Formed Galvanized Steel W/1" Return At Top (MVR)	
Vents SS Wire Mesh	Stainless Steel Wire Mesh - Provide Lexan Cover for Vents	

### Change Request

**To:** Chad Crittenden  
PMA Consultants  
35 Braintree Hill Park  
Suite 300  
Braintree, MA 02184  
Ph: (781)794-1404

**Number:** 153.1  
**Date:** 11/30/22  
**Job:** 21-0060 Dennis Yarmouth-Middle School  
**Response Due Date:**  
**Urgency:** Normal

**Description:** Bulletin 45R1 - Fields Bathroom - Building Only

Listed below is the pricing to make the following changes:

This Scope Includes:  
Furnishing and installing the prefabricated fields restroom only, this pricing does not include  
- Connecting of utility, mechanical or electrical connections  
- Any utility, mechanical or electrical or any other work outside the foot print of the building  
- Any schedule impacts associated with this scope that may impact labor or staffing

See attached quote for specifics of what is included, any costs above and beyond will be captured in a seperate change order once finalized.

Please note this pricing is valid until 1/31/22 and this building has an estimated 8 month lead time.

Description	Price
Prefabricated Restroom	\$286,291.00
Subtotal:	\$286,291.00
Permit	\$501.01
Builder's Risk	\$286.79
P&P Bonds	\$1,700.94
GL & Propert Insurance	\$2,021.46
FEE	\$14,540.06
Total:	\$305,341.26

# CHANGE MANAGEMENT AUTHORIZATION

## COR #153.1 (OPTION 1)

DOORS - HARDWARE		
ITEM	DESCRIPTION	
Hollow Metal Doors	Hollow Metal: Galvanized 14 GA. Door w/ 14 GA Frame Continuous Hinge	
Deadbolt	SCHLAGE B600 series temporary large format core (std)	
ITEM	DESCRIPTION	LOCATION
Pull Plates	Rockwood-VRT24 "Z" (Standard w/Anti-Microbial) (Std)	
Door Closer	LCN Closer, Model # 4211 Cush Arm (for Out Swing Door)	Restroom
Door Sweeps	Pemko Door Sweep 321SSN36"	Chase
Door Threshold (No Tile)	Threshold Fluted Saddle Mill Finish Alum, 4" Wide #270A36	All
Ives Crash Chain (Standard)	Ives Crash Chain, # CS11526D20, US26D, 20.5, Crash Stop	Chase
RESTROOM ACCESSORIES		
ITEM	MANUFACTURER/DESCRIPTION	FINISH
Signage	Door/Wall Signs	Polished Aluminum & Blue
Grab Bars	Grab Bars	Stainless Steel
Aluminum Louvers (Chase Std)	Louver Sunvent Industries Model #157	Polished Aluminum
3-roll Toilet Paper Holders	Royce Rolls TP-3	Stainless Steel
Baby Changing Station	Foundations Horizontal #5410339	Stainless Steel
Hand Dryer Std	Dyson Airblade V, Low Voltage 120V, Model # HU02,	Spray Nickel
ITEM	MANUFACTURER/DESCRIPTION	
Utility Hook (Standard)	Utility Hook, Bright Finish, Bobrick # B-670-PRC or Franklin Brass 5501 for Blazer	
Soap Dispenser	PRC Proprietary Tank	
W/Thru Wall Valve	Thru Wall Valve ASI #353	
PRIVACY SCREENS (PARTITION WALLS)		
CMU with Paperstone Doors	CMU Stall Walls With Paper Stone Doors, Continuous Hinges, Pilasters	
PLUMBING		
FIXTURE/PART	DESCRIPTION	
Toilets - Stainless Steel	Acorn # 1675 W-1-HET 1.28 GPF-FVBO-ADA-PFS-316SS	
Urinals - Stainless Steel	Acorn # 1709 HEU-W-1-0.125-FVBO-316SS	
Lavs - Stainless Steel	Rear Connect Acorn # 1652LRB-1-DMS-03-M-316SS	
Lever (Std) - Toilet Flush Valve	Zurn W.C. Flush Valve 1.28 Ga Zurn # Z6143AV-HET-7L-BG	
Lever - Urinal Flush Valve	Zurn Urinal Flush Valve .125 GPM Zurn # Z6195AV-ULF-7L-BG	
Metering Faucet	Single Hole Metering Faucet, Chicago Model # 333-E2805-665PSHABCP - Tempered	
Floor Drains: W/Trap Primer	Floor Drain Zurn # ZN460-2NH-5B W/Strainer / With Trap Primer	
PLUMBING GENERAL		
FIXTURE/PART	DESCRIPTION	
Water Heater	Stiebel DHC-E3	1 lavatory
Valve Combo (PRV)	Valve Combo with Pressure Reducing Valve	
Water Line Material	Copper (Std)	
Bladder Tank	ProFlo PFXT5, (PRC)/ Amtrol 2 gal (Blazer) - no elect required	
Hose Bibb- Interior	Acorn #8121-LF - in the Chase	
Hose Reel & Hose	Hose Reel With 5/8"x75' Garden Hose	

ELECTRICAL		
ITEM	DESCRIPTION	
Electrical Panel	100 amp Single Phase - 120/240 v	20 Circuits
Breakers	Plug on (QOD)	
LIGHTING		
ITEM	DESCRIPTION (W=WALL, C=CEILING)	
Lighting Control -Interior-	Light Fixture Integrated Occupancy Sensor (OCC)	
Interior Lights	W/C) Luminaire, Swoop Series SWP1212-OP-BRZ-OCC	15 Watts
Lighting Control -Exterior-	Photo Cell Intermatic Photo Control #EK4336S	
Exterior Light	W) Luminaire, Swoop Series YWP-610-OP-BRZ	15 Watts
Chase Lights	C) Green AL-42L (large Chase)Waterproof	30 Watts
RECEPTACLES/SWITCHES, HEATERS, FANS, HVAC, LIGHTED SIGNS		
ITEM	DESCRIPTION	LOCATION
Receptacles	GFCI (Adjacent to Panel)	
Switches Single Pole	Single Pole (Adjacent to Panel)	
Switches By Pass	By Pass (To By Pass OCC Sensors)	
Emergency Light	Lithonia ELM2L Led 2 Head Led Emergency Light (Mechanical Room)	





# CHANGE MANAGEMENT AUTHORIZATION

## COR #153.1 (OPTION 2)

### Change Request

Stamped Drawing and Specifications supplied with signed order.

To: Chad Crittenden  
PMA Consultants  
35 Braintree Hill Park  
Suite 300  
Braintree, MA 02184  
Ph: (781)794-1404

Number: 153.1R2  
Date: 11/30/22  
Job: 21-0060 Dennis Yarmouth-Middle School  
Response Due Date:  
Urgency: Normal

The following price has been generated for your review and approval:

Easi-Set Precast Concrete Building; 12'-0''x 21'-0'' x 8'-8''h outside dim	
Roof:	GABLE ROOF, FINE BROOM FINISH
Exterior face texture:	PRECAST CONCRETE, BRICK FORM LINER FINISH, COLOR , TBD
Interior face texture:	SMOOTH TROWEL FINISH, PAINTED INTERIOR WALLS,EPOXY FLOOR PAINT
Door, frame & hardware:	(2) 3'x7' SINGLE ENTRY DOORS (1) 30"x7' SINGLE ENTRY DOOR, 16 GA, 14 GA FRAMES, HARDWARE INCLUDED, w/ Door Vents
HVAC:	(2) 12" x 12" Fixed Louvers
Fixtures & Accessories:	Solid thru color Dividers anchored to floor, (2) Mirrors, (4) Toilet paper dispensers, (2) Soap dispensers. (2) Grab bars, (2) Electric Hand Dryers (2) Baby changing tables
Electrical:	1.Furnish and install the following in each bathroom. Description is typical of (2) bathroom total: 1 – 20amp 125v DBC to each bathroom 1 – 20amp 125 GFI receptacle. 1 – 4ft Vandal resistant LED fixture 1 – Wiring to the Hand Dryer 1 – Exterior LED wall pack with photocell control 1 – line voltage occupancy sensor. Proposed sensor to control the proposed 4ft vandal resistant fixture and exhaust fan.  2.Furnish and install the following in the service corridor: 1 – 100amp, MCB 20 circuit 120/240v 1ph-3w load center. 1 – 20amp 125v GFI receptacle. Proposed outlet to be mounted directly off the proposed load center with switch for the service corridor lighting.

Description: Bulletin 45R1 - Fields Bathroom - Building Only - Shea

Listed below is the pricing to make the following changes:

This Scope Includes:  
Furnishing and installing the prefabricated fields restroom only, this pricing does not include  
- Connecting of utility, mechanical or electrical connections  
- Any utility, mechanical or electrical or any other work outside the foot print of the building  
- Any schedule impacts associated with this scope that may impact labor or staffing

See attached quote for specifics of what is included, any costs above and beyond will be captured in a seperate change order once finalized.

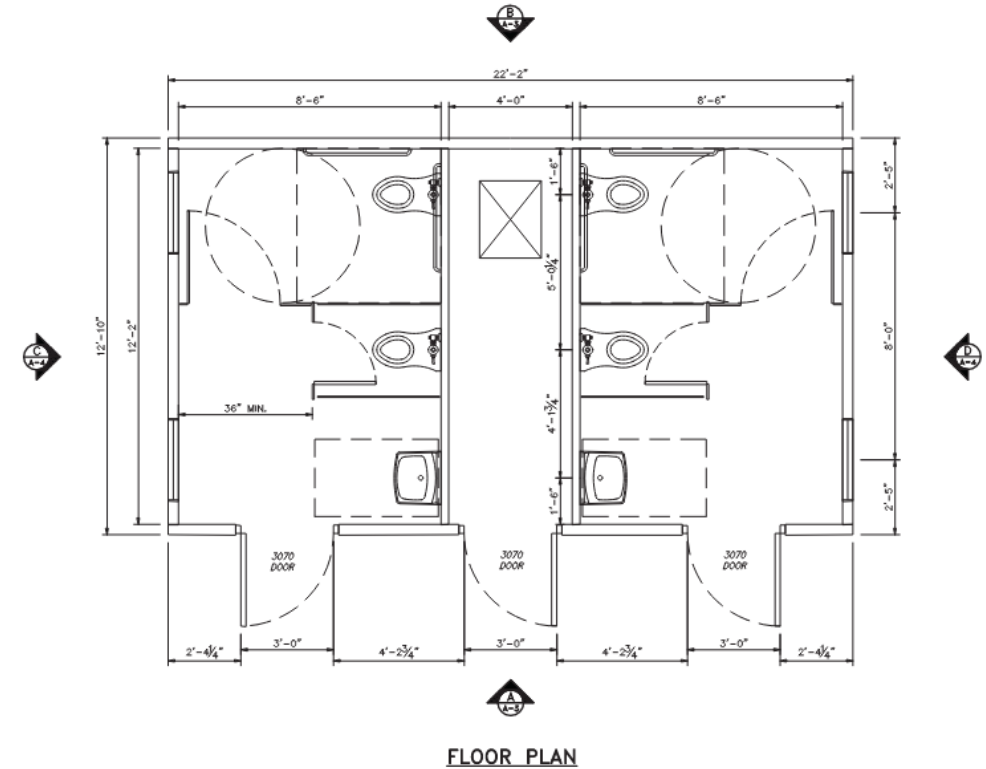
\*Pricing has been revised to include:  
- Stainless steel fixtures  
- Changing tables  
- Epoxy floors  
- Mop sink in chase

Description	Price
Prefabricated Restroom	\$163,000.00
Subtotal:	\$163,000.00
Permit	\$285.25
Builder's Risk	\$163.29
P&P Bonds	\$968.43
GL & Propert Insurance	\$1,150.92
FEE	\$8,278.39
Total:	\$173,846.28

# CHANGE MANAGEMENT AUTHORIZATION

## COR #153.1 (OPTION 2)


	<p>1 – 20amp single pole switch to control the proposed service corridor lighting. Location of switch is as noted above.</p> <p>2 – 4ft LED strip fixture with wire guard. Proposed lights to be mounted on the demising wall.</p> <p>1 – LED wall pack with integral photocell.</p> <p>1 – 30amp 230v 1ph-3w DBC for the hot water heater.</p> <p>Proposal includes a non-fusible service switch and all misc. materials for a complete job.</p> <p>NOTES</p> <p>Proposal includes surface mounted EMT conduit, copper conductors and commercial grade device.</p> <p>All work except the final connection to be performed at the Shea Concrete facility in Amesbury, Ma .Final connection at site by others.</p>
Plumbing:	<p>(3) Stainless wall mounted toilets (1) Stainless Urinal (2) Stainless wall mounted sinks, (1) Mop sink in Chase, All sewer piping will be cast iron. All water supply will be copper. All plumbing to be performed in Amesbury facility .Final connection at site by others.</p>



# CHANGE MANAGEMENT AUTHORIZATION

## Added Fence at Turf Fields

FAUCHER S (A) DY - REGIONAL SCH. RT 2 - MARY, US



**SALES AGREEMENT**  
**FULLY INSURED & BONDED**  
www.profenceco.com

☐ 133 UPPER COUNTY ROAD • SOUTH DENNIS, MA 02660 • (508) 394-4800 • FAX (508) 394-6735  
☐ 835 WOBURN STREET • WILMINGTON, MA 01887 • (781) 933-1234 • (978) 657-5410 FAX: (978) 658-9932

ORDER NO.  
**50R**

DATE  
**2/10/23**

NAME <b>DY REGIONAL SCHOOL</b>		SHIP TO STREET <b>STATION AVE</b>	
STREET <b>STEVE FAUCHER</b>		CITY <b>YARMOUTH</b>	STATE ZIP CODE
CITY	STATE	ZIP CODE	INSTALLATION TELEPHONE NOTIFICATION
HOME PHONE		BUSINESS PHONE	

BLACK	550'	STYLE <b>FB 9 CORE 8 FINISH</b>	NO. OF RAILS <b>2</b>	HEIGHT <b>4'</b>
-------	------	------------------------------------	--------------------------	---------------------

ON YOUR PROPERTY IN ACCORDANCE WITH QUANTITIES AND LAYOUT SHOWN BELOW

QUANTITY	DESCRIPTION	UNIT	TOTAL
47	CORE 45 HOOK UP	11	
9	GATES 3 WALK 3 DOUBLE 15/8 40 WT.		
	BULLDOG, ILO. DROP ROADS	11	
	FRAME TOP + BOTTOM RAIL	15/8	
	TERM 2 7/8"		
	LINE 2 3/8"		
	ALL 40 WT BLACK		
550	FB 9 CORE 8 FINISH		
DEPOSIT		TOTAL SALE	
BALANCE On Completion		TAX	
TERMS		TOTAL \$ 49,900-	

ONE HALF WITH ORDER BALANCE ON COMPLETION

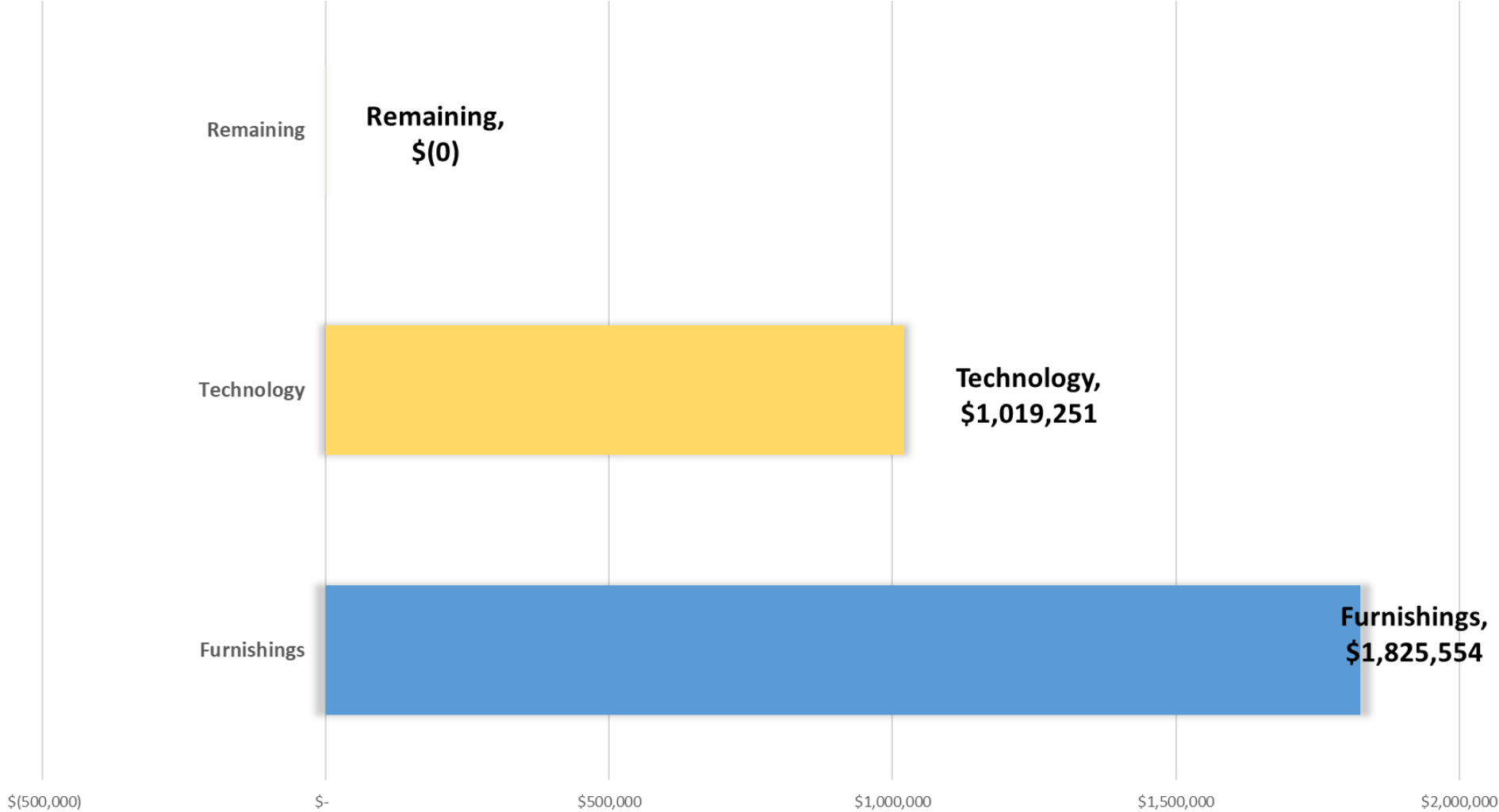


## Added Fence at Turf Fields

[illegible]

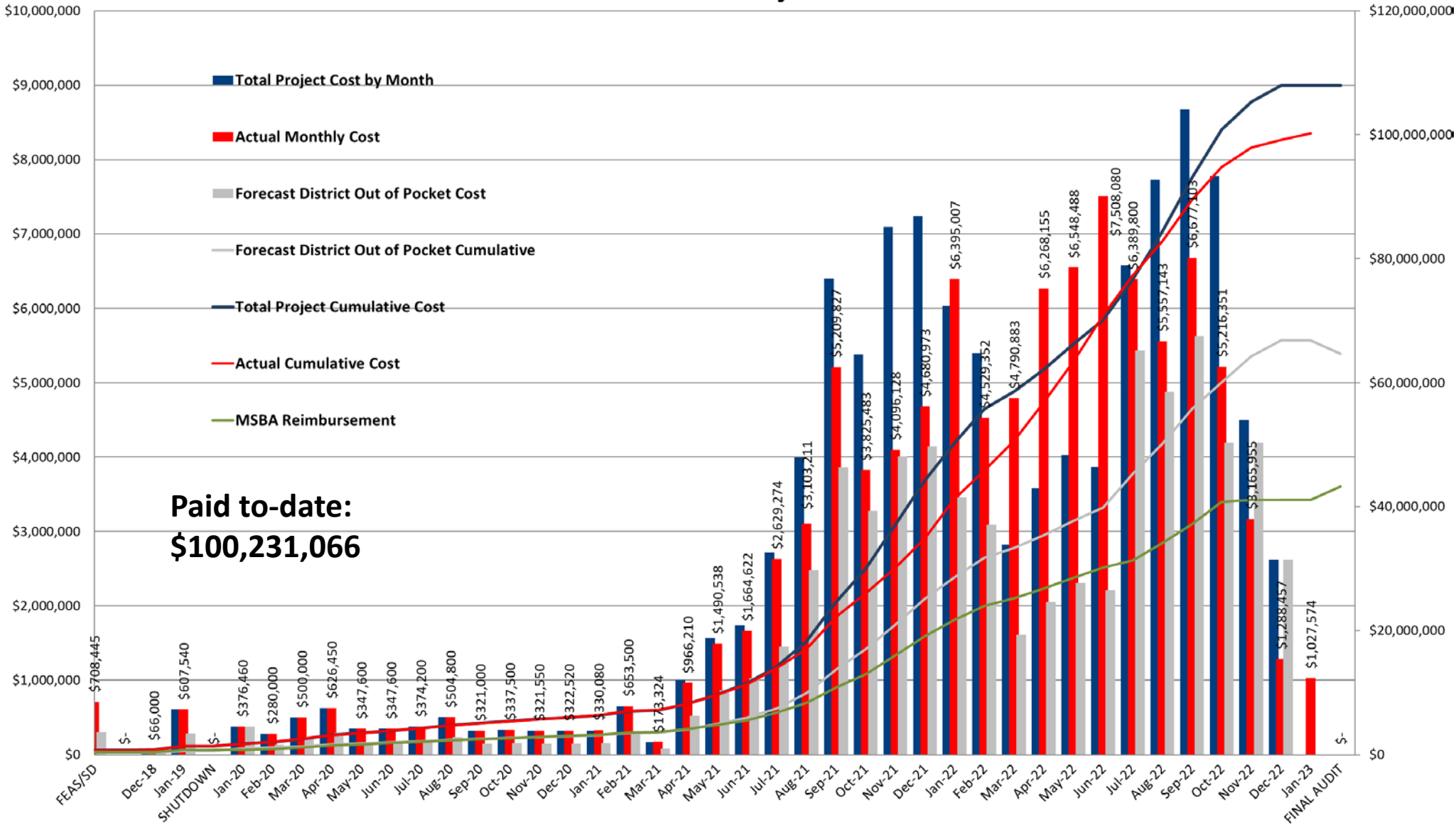
# FFE/IT BUDGET UPDATE

Budget	\$	2,844,805	Includes \$550,000 + \$38,805 transfer from Soft Cost Contingency
Furnishings	\$	1,825,554	
Technology	\$	1,019,251	
Remaining	\$	(0)	



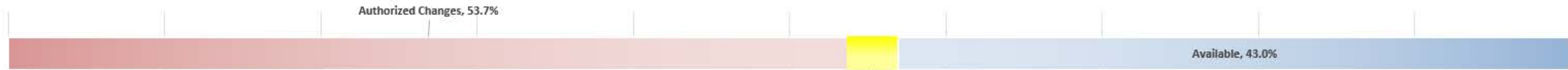
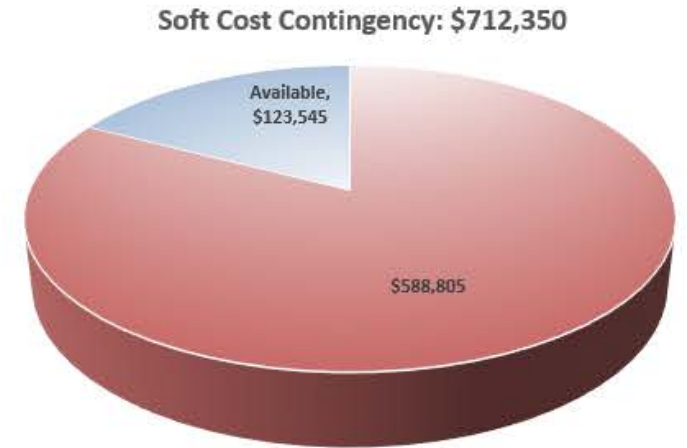
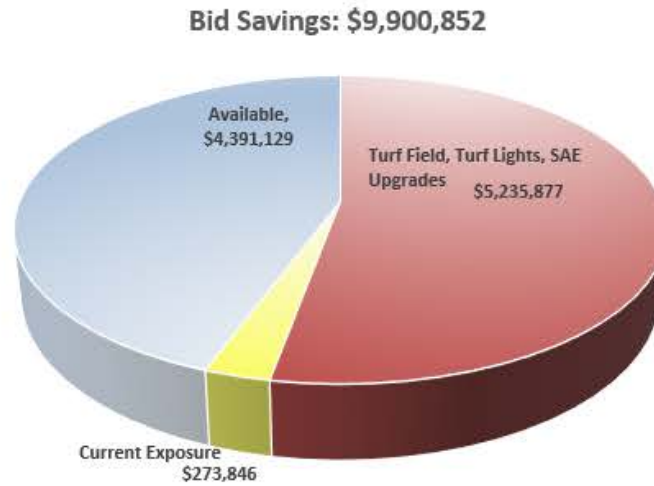
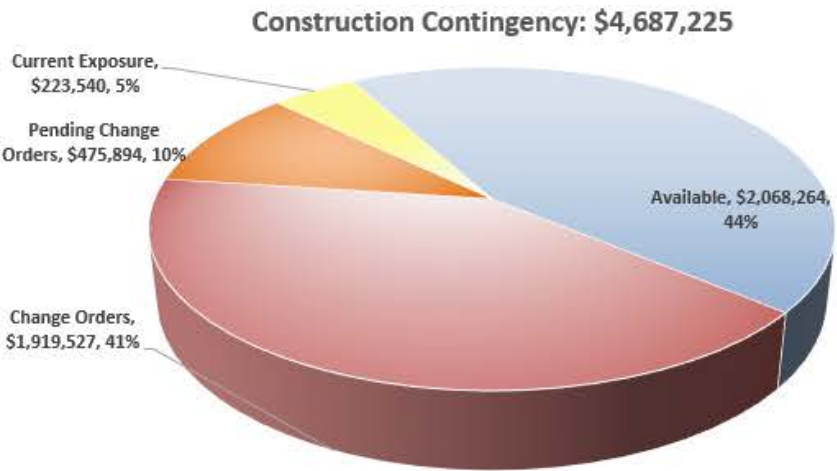
# PROJECT CASHFLOW

## DYIMS Cashflow Projection





# CONSTRUCTION CONTINGENCY



- New Business
- Public Comment Period
- Motion to Adjourn

**THANK YOU**





**PERKINS —  
EASTMAN**

Photo courtesy of TripAdvisor



# **DENNIS-YARMOUTH SCHOOL PROJECT**

**THE DYIMS SCHOOL BUILDING  
COMMITTEE**