



**PERKINS —
EASTMAN**

Photo courtesy of TripAdvisor



DENNIS-YARMOUTH SCHOOL PROJECT

SCHOOL BUILDING COMMITTEE

March 8, 2018

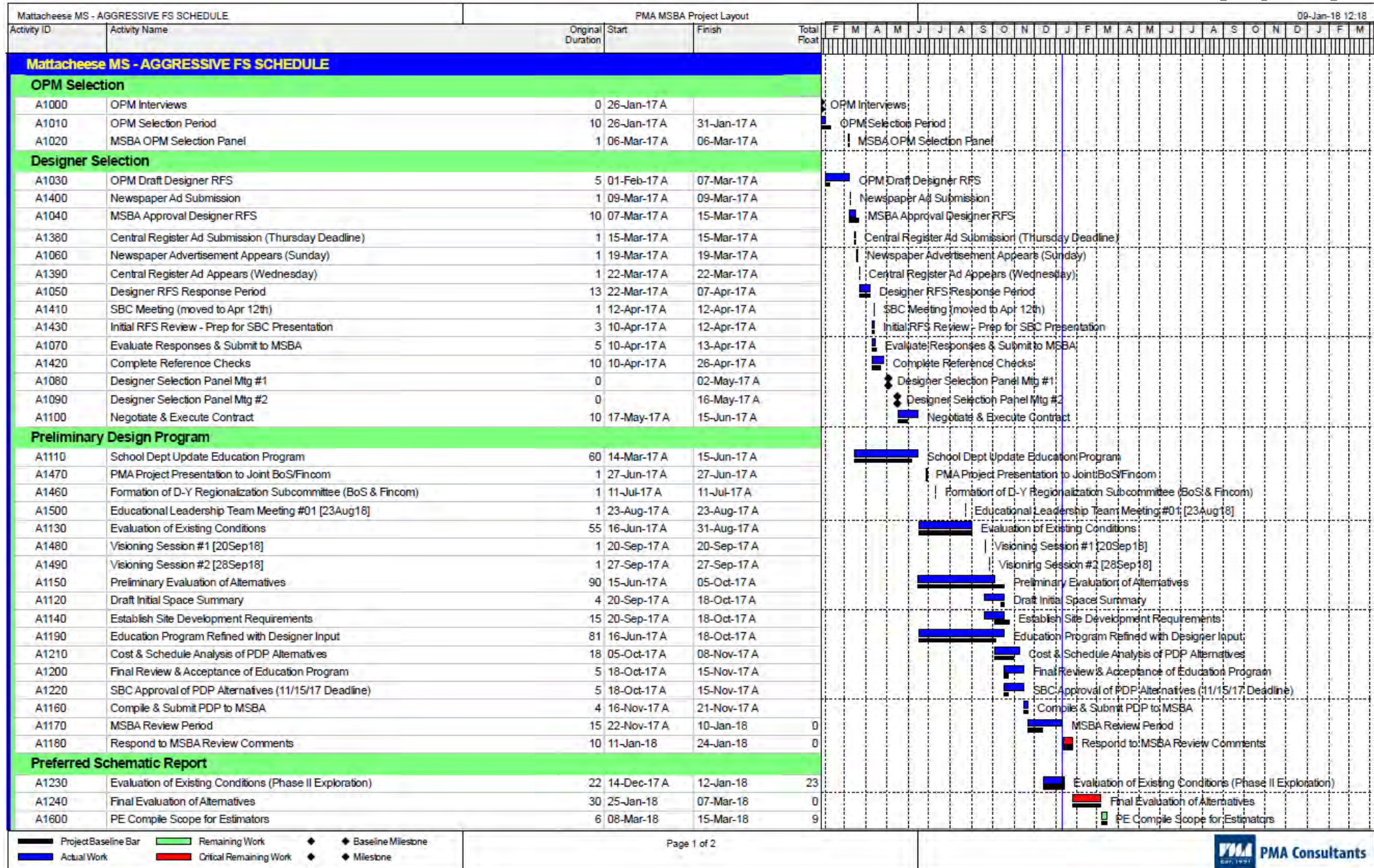


SCHEDULE AND DECISIONS

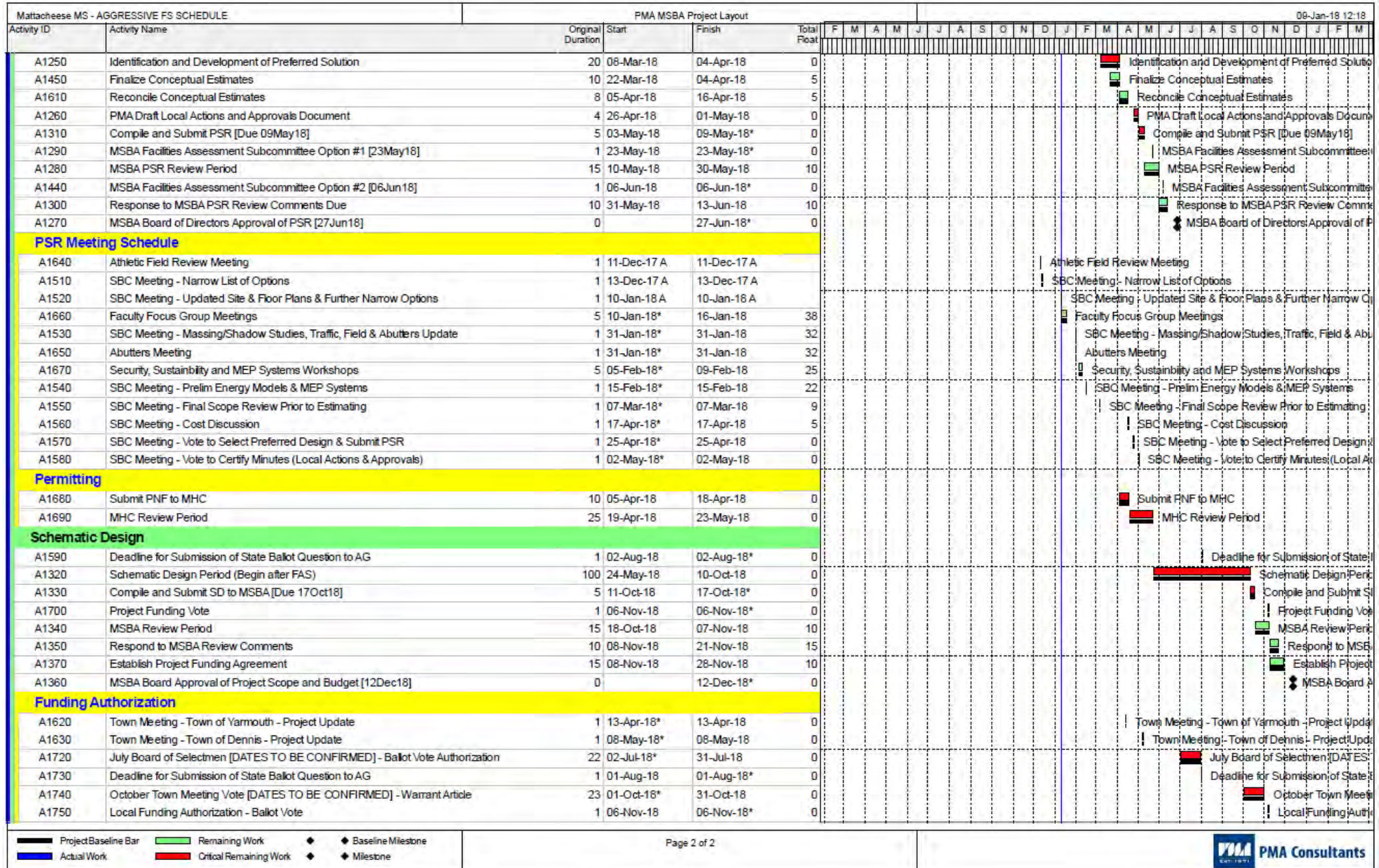
- Wednesday, Jan. 10 – SBC (review options – preferred site)
- Wednesday, Jan. 31 – Abutters Meeting #1
- Wednesday Jan. 31 – SBC (options refinements, massing & shadow studies)
- Thursday, Feb. 15 – SBC (options refinements + systems & energy modeling)
- Wednesday, Feb. 28 – SBC (options refinements + re-evaluation of sites and plans)
- Wednesday, Feb. 28 – Abutters Meeting #2

- Wednesday, Mar. 8 – SBC Selection of Preferred Solution
- Wednesday, Apr. 11 – SBC (cost discussion following estimate reconciliation)
- **Monday, Apr. 23 – Joint BoS, Finance, School Committee**
- Wednesday, Apr. 25 – SBC (vote to submit Preferred Schematic Report)
- Wednesday, May 9 – Compile & Submit PSR
- Wednesday, May 23 – MSBA Facilities Assessment Subcommittee Meeting
- Wednesday, Jun. 27 MSBA Board of Directors (for PSR approval)

PROJECT SCHEDULE (1/2)

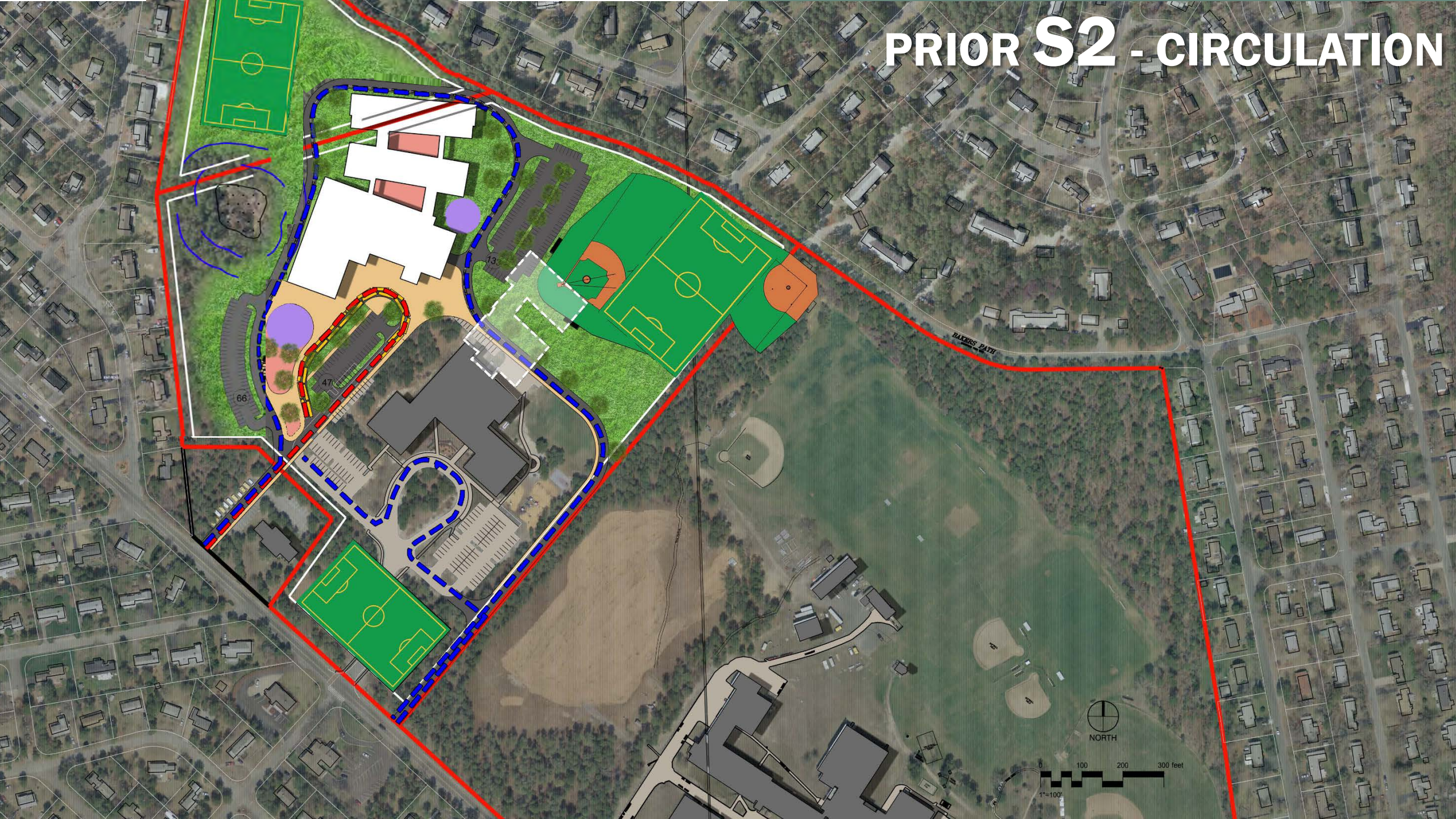


PROJECT SCHEDULE (2/2)





PRIOR S2 - CIRCULATION



REV. S2 - CIRCULATION

VEHICULAR CAPACITY:

Parking = 250 cars

Full Car Loop = 3380 lf

Car Que = 2980 lf

Bus Que = 28, double-stacked

STRUCTURED PLAY:

Playground & Outdoor CR (purple)



REV. S2 – ALT. STUDY

VEHICULAR CAPACITY:

- Parking = 250 cars
- Full Car Loop = 3380 lf
- Car Que = 2980 lf
- Bus Que = 28, double-stacked

STRUCTURED PLAY:

Playground & Outdoor CR (purple)

NORTH

0 100 200 300 feet

Parking = 250 cars
Full Car Loop = 3380 lf
Car Que = 2980 lf
Bus Que = 28, double-stacked

Playground & Outdoor CR (purple)



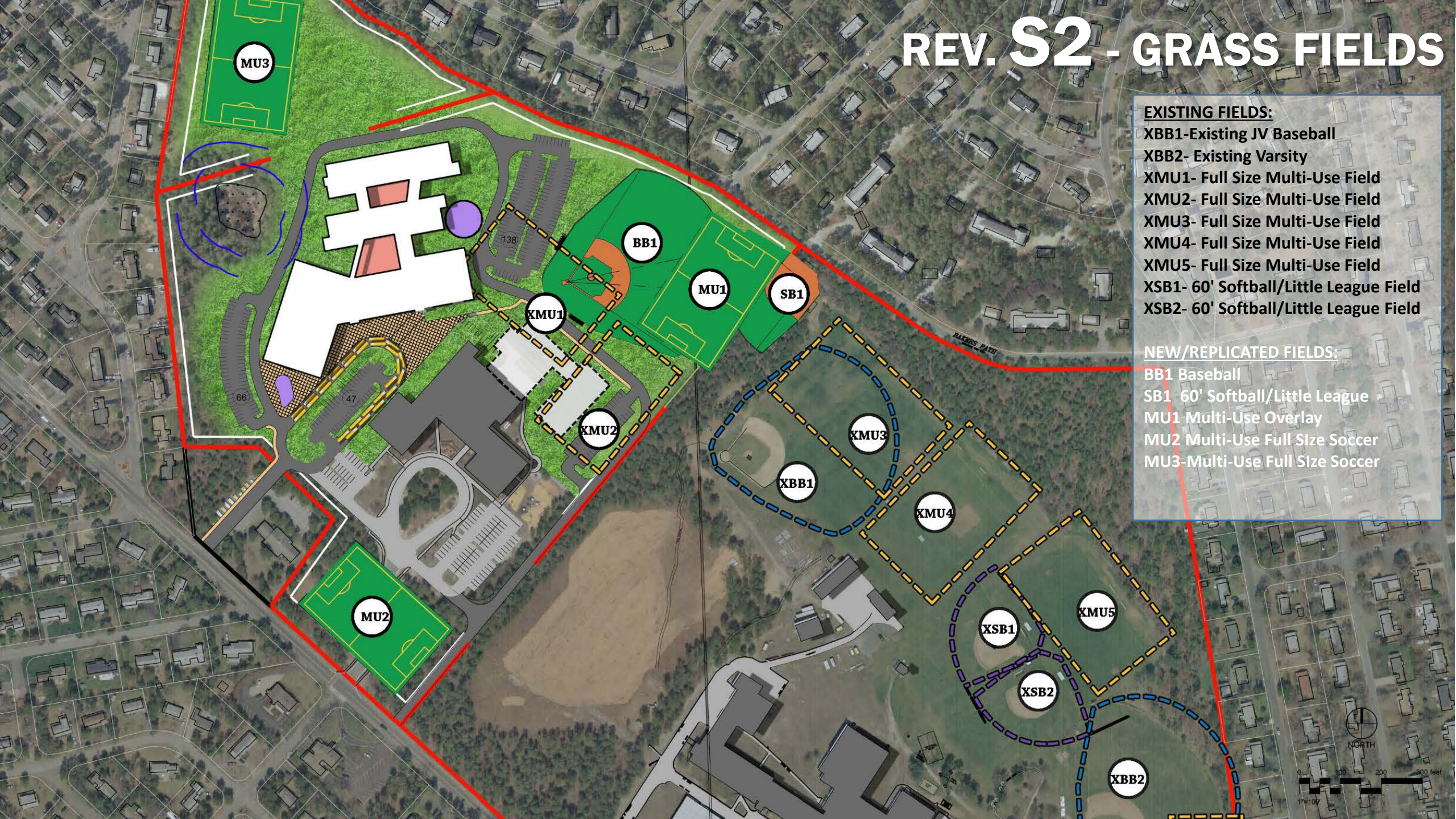
REV. S2 - GRASS FIELDS

EXISTING FIELDS:

- XBB1-Existing JV Baseball
- XBB2- Existing Varsity
- XMU1- Full Size Multi-Use Field
- XMU2- Full Size Multi-Use Field
- XMU3- Full Size Multi-Use Field
- XMU4- Full Size Multi-Use Field
- XMU5- Full Size Multi-Use Field
- XSB1- 60' Softball/Little League Field
- XSB2- 60' Softball/Little League Field

NEW/REPLICATED FIELDS:

- BB1 Baseball
- SB1 60' Softball/Little League
- MU1 Multi-Use Overlay
- MU2 Multi-Use Full Size Soccer
- MU3-Multi-Use Full Size Soccer



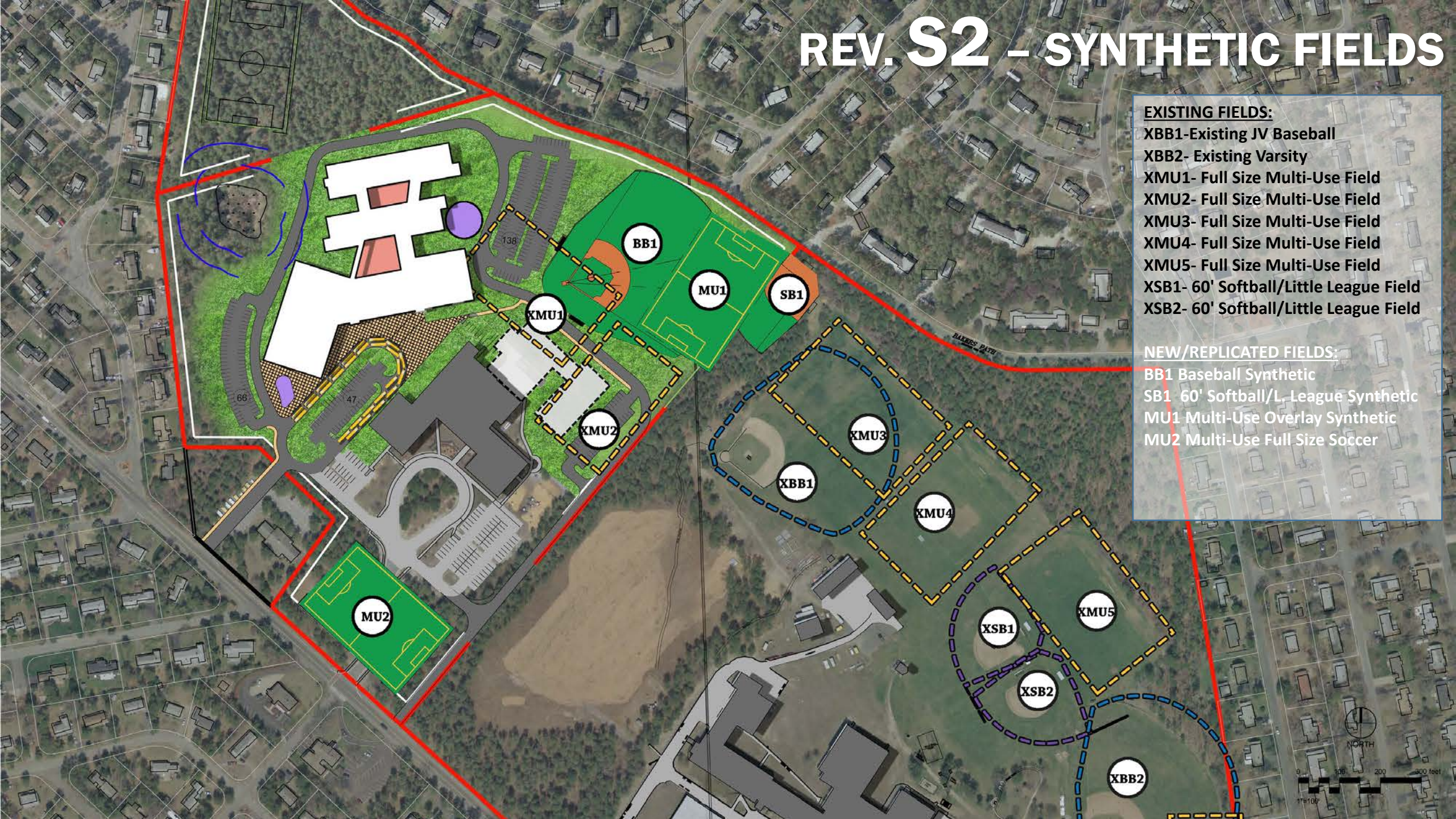
REV. S2 - SYNTHETIC FIELDS

EXISTING FIELDS:

- XBB1-Existing JV Baseball
- XBB2- Existing Varsity
- XMU1- Full Size Multi-Use Field
- XMU2- Full Size Multi-Use Field
- XMU3- Full Size Multi-Use Field
- XMU4- Full Size Multi-Use Field
- XMU5- Full Size Multi-Use Field
- XSB1- 60' Softball/Little League Field
- XSB2- 60' Softball/Little League Field

NEW/REPLICATED FIELDS:

- BB1 Baseball Synthetic
- SB1 60' Softball/L. League Synthetic
- MU1 Multi-Use Overlay Synthetic
- MU2 Multi-Use Full Size Soccer



S4 - CIRCULATION

VEHICULAR CAPACITY:

Parking = 250 cars

Full Car Loop = 3790 lf

Car Que = 2980 lf

Bus Que = 28, double-stacked

STRUCTURED PLAY:

Playground & Outdoor CR (purple)



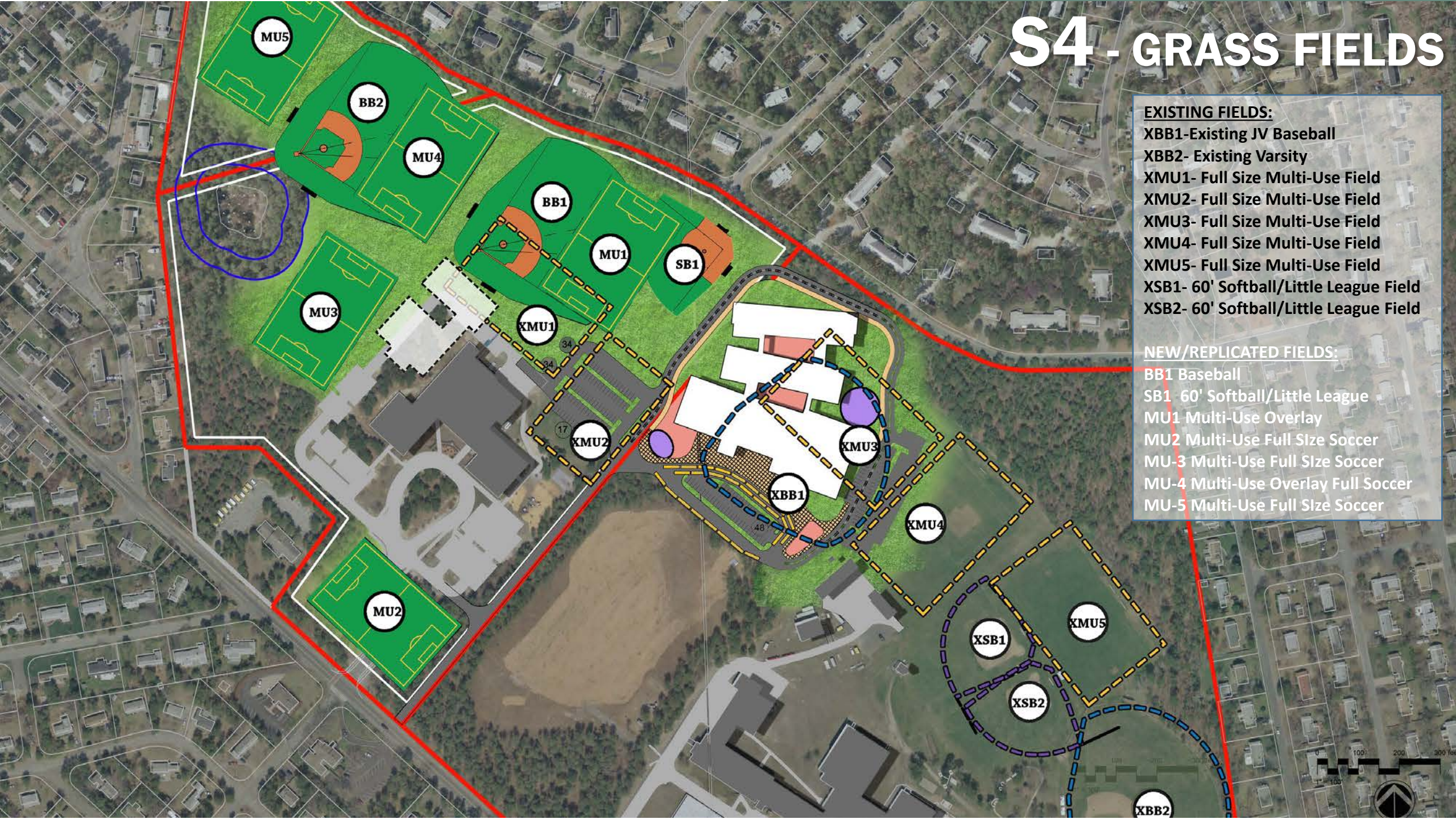
S4 - GRASS FIELDS

EXISTING FIELDS:

- XBB1-Existing JV Baseball
- XBB2- Existing Varsity
- XMU1- Full Size Multi-Use Field
- XMU2- Full Size Multi-Use Field
- XMU3- Full Size Multi-Use Field
- XMU4- Full Size Multi-Use Field
- XMU5- Full Size Multi-Use Field
- XSB1- 60' Softball/Little League Field
- XSB2- 60' Softball/Little League Field

NEW/REPLICATED FIELDS:

- BB1 Baseball
- SB1 60' Softball/Little League
- MU1 Multi-Use Overlay
- MU2 Multi-Use Full Size Soccer
- MU-3 Multi-Use Full Size Soccer
- MU-4 Multi-Use Overlay Full Soccer
- MU-5 Multi-Use Full Size Soccer



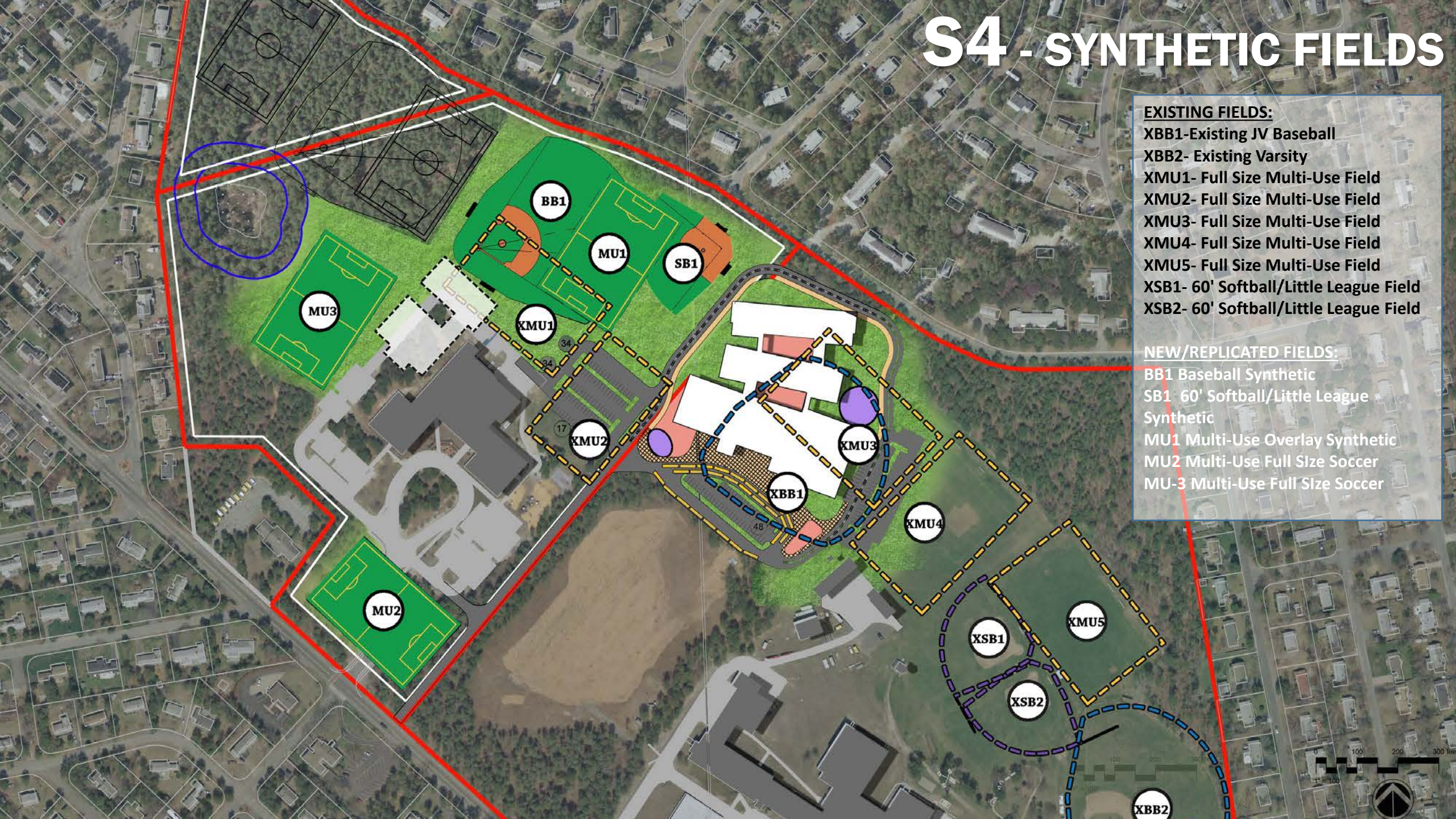
S4 - SYNTHETIC FIELDS

EXISTING FIELDS:

- XBB1-Existing JV Baseball
- XBB2- Existing Varsity
- XMU1- Full Size Multi-Use Field
- XMU2- Full Size Multi-Use Field
- XMU3- Full Size Multi-Use Field
- XMU4- Full Size Multi-Use Field
- XMU5- Full Size Multi-Use Field
- XSB1- 60' Softball/Little League Field
- XSB2- 60' Softball/Little League Field

NEW/REPLICATED FIELDS:

- BB1 Baseball Synthetic
- SB1 60' Softball/Little League Synthetic
- MU1 Multi-Use Overlay Synthetic
- MU2 Multi-Use Full Size Soccer
- MU-3 Multi-Use Full Size Soccer



MASSING STUDIES – EXISTING



MASSING STUDIES – S2



MASSING STUDIES – REV. S2



MASSING STUDIES – REV. S2 ALT



MASSING STUDIES – S4



OPTIONS ON EXISTING SITES



M1 (Mattacheese Gr. 6-7)



W2 (Wixon Gr. 4-7)

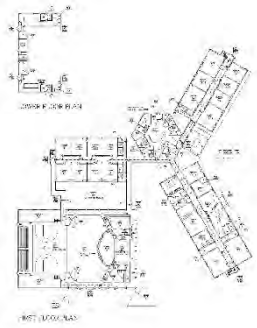


PRIOR S2 & REV. S2 COMM-FRONT (Gr. 4-7)



S4 COMM-FRONT (Gr. 4-7)

FINAL EVALUATION OF OPTIONS



MRX MATTACHEESE SITE CODE + REPAIRS ONLY

Relatively Flat Site, 70 Acre
(40 useable, 21 developed)
Aquafer-protect + Wetland

Repair Costs Trigger 30%
Threshold Requiring Full
Accessibility Compliance &
Renovation

Waffle Slab Construction
Difficult To Renovate –
Limited Room For Modern
Mechanical Systems

**Will Not Meet Educational
Program – MSBA Core
Program Will Not Support**

Occupied Phased Reno
Cost Prohibitive &
Disruptive



M1 MATTACHEESE SITE ALL NEW (GR. 6-7)

Relatively Flat Site, 70 Acre
(40 useable, 21 developed)
Aquafer-protect + Wetland

Site/Traffic Considerations:
Remains Similar To Existing
Separate Bus & Car Loops

Construction/Phasing:
Limited Impact To School
(Mostly Parking & Access)

Educational & Community:
Keeps Existing Transitions
Aud. Opens to Cafeteria
Media Center as Jewel
Does Not Address Wixon
Deficiencies Outlined in SOI
Cost Considerations:
Less Cost Immediately
Much Higher Cost Overall
w/ Wixon Addressed Later



W2 WIXON SITE ALL NEW (GR. 4-7)

Partial Sloped Site, 34 Acre
(30 useable, 23 developed)
Wellhd, Historic + Wetland

Site/Traffic Considerations:
Increased Traffic
Shorter Que For More Cars
Car Loop Not Near Entry
Too Close To Main Road
Keeps Existing Playground

Construction/Phasing:
Limited Impact To School
(Mostly Parking & Access)
Temp. Loss Of Track/Field
Educational & Community:
Not Centrally Located,
Creates Inequitable Travel,
Lacks Community Support
Aud. Opens to Cafeteria
Media Center as Jewel

Cost Considerations:
Less Cost Over Time With
2 Schools Addressed Now
Slightly More Than S2 & S4



S2 STATION AVE SITE ALL NEW (GR. 4-7)

Relatively Flat Site, 70 acre (40 useable, approximately 25 developed),
Aquafer Protection Distr. and Wetland)

Site/Traffic Considerations:
Travel Equity; Both Towns
Utilizes Existing Curb Cuts
Long Car Que (Off-street)
More Fields Close to HS

Construction/Phasing:
Minimal Impact To Schools
Limited Field Disturbance

Educational & Community:
Centralizes Facilities to All
Bldg Proximity To Homes
Aud. Opens to Cafeteria
Media Center as Jewel

Cost Considerations:
Least Cost Over Time With
2 Schools Addressed Now



REV.S2 STATION AVE ALL NEW (GR. 4-7)

Site/Traffic Considerations:
Travel Equity; Both Towns
Utilizes Existing Curb Cuts
Long Car Que (Off-street)
More Fields Close to HS

Construction/Phasing:
Minimal Impact To Schools
Limited Field Disturbance

Educational & Community:
Centralizes Facilities to All
Bldg Proximity To SES
Aud. Opens to Cafeteria
Media Center as Jewel

Cost Considerations:
Least Cost Over Time With
2 Schools Addressed Now



S4 STATION AVE SITE ALL NEW (GR. 4-7)

Site/Traffic Considerations:
Travel Equity; Both Towns
Utilizes Existing Curb Cuts
Long Car Que (Off-street)
More of a Campus Feel
Many Fields Far From HS
...incl. Toilets & Parking

Construction/Phasing:
Minimal Impact To Schools
Limited Field Disturbance
(with new fields built first)
Educational & Community:
Centralizes Facilities to All
Field Proximity To Homes
Hallway Splits Caf/Kitchen

Cost Considerations:
Less Cost Over Time With
2 Schools Addressed Now

OVERALL COST COMPARISONS

CONCEPTUAL LEVEL COST SCENARIO

