



MATTACHEESE MIDDLE SCHOOL DENNIS-YARMOUTH RSD

SCHOOL BLDG COMMITTEE

MATTACHEESE CORE TEAM



ROBERT F. BELL, AIA, ALEP,
LEED AP BD+C, MCPPO

PRINCIPAL-IN-CHARGE &
EDUCATIONAL
PROGRAMMING



DANIEL T. COLLI, AIA,
LEED AP BD+C, MCPPO

PROJECT MANAGER



JANA G. SILSBY, AIA,
LEED AP, MCPPO

PROJECT ARCHITECT

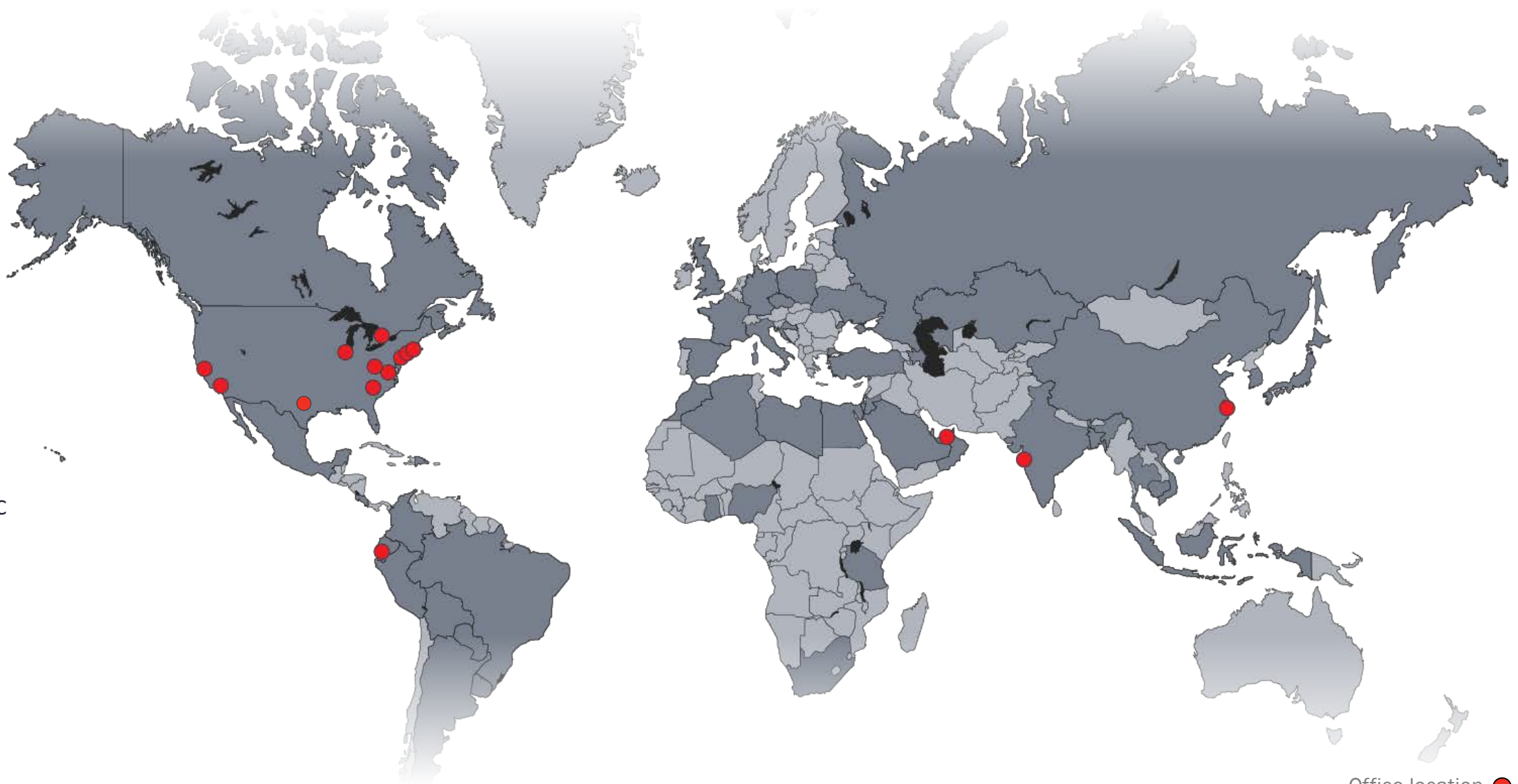


DAVID STEPHEN, RA,
M.Ed.

EDUCATIONAL VISIONING

GLOBAL

NEW YORK
BOSTON
CHARLOTTE
CHICAGO
DALLAS
LOS ANGELES
PITTSBURGH
SAN FRANCISCO
STAMFORD
WASHINGTON DC
TORONTO
SHANGHAI
GUAYAQUIL
MUMBAI
DUBAI



Office location ●
Countries worked in ■

NEW YORK

BOSTON

CHARLOTTE

CHICAGO

DALLAS

LOS ANGELES

PITTSBURGH

SAN FRANCISCO

STAMFORD

WASHINGTON DC

TORONTO

SHANGHAI

GUAYAQUIL

MUMBAI

DUBAI

LOCAL



EXPERIENCE



NORTH HAEN MIDDLE SCHOOL



RUNKLE K-8 SCHOOL



THOMAS JEFFERSON MIDDLE SCHOOL



CRITTENDEN MIDDLE SCHOOL



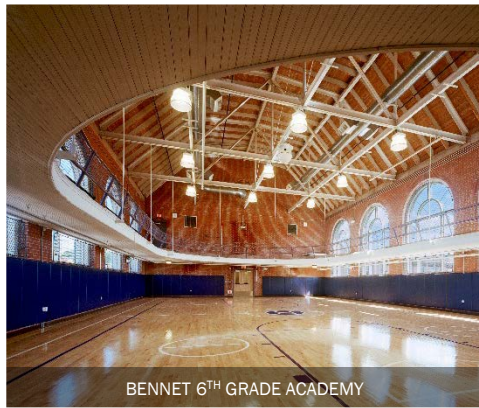
EAST WOODS SCHOOL



BLAKE MIDDLE SCHOOL



READING PARKING MIDDLE



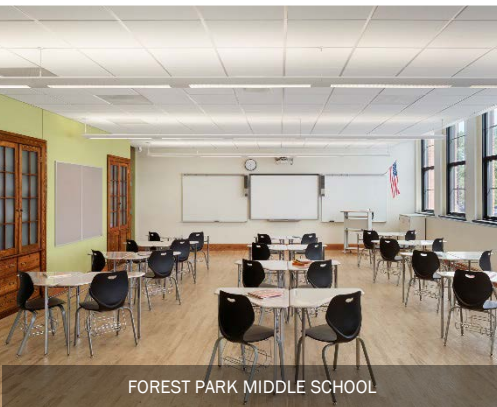
BENNET 6TH GRADE ACADEMY



FALK LAB SCHOOL



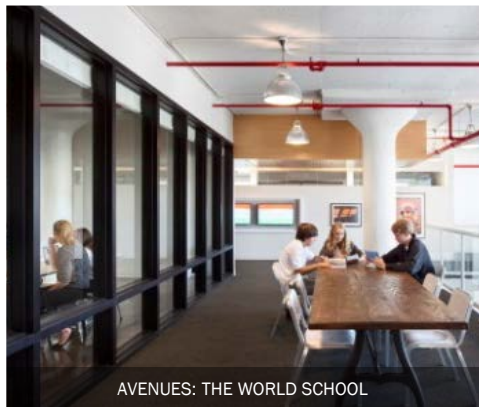
NORTH MIDDLE SCHOOL



FOREST PARK MIDDLE SCHOOL



WELLESLEY MIDDLE SCHOOL



AVENUES: THE WORLD SCHOOL



MARTIN LUTHER KING, JR.



CARL SANDBURG MIDDLE

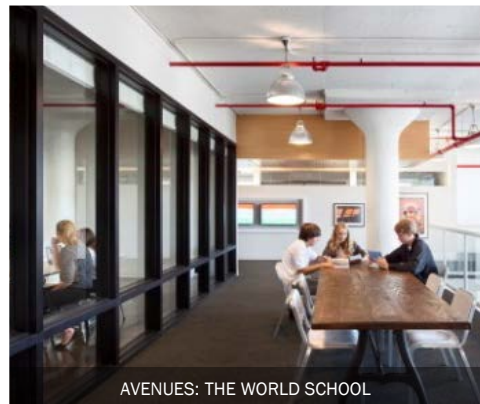
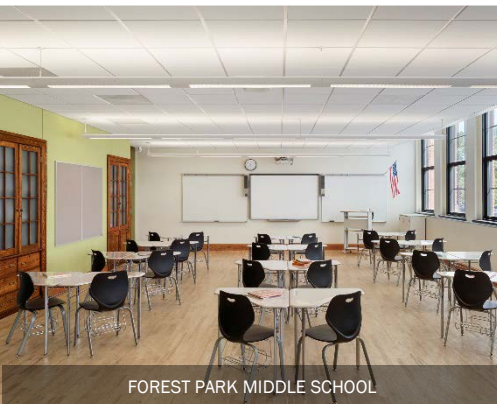
EXPERIENCE

31 Middle Schools out
of 130 MA School
Projects



7 Multi-Town
Community Projects

9 Grade Configuration
Studies



75% Renovation
(Most Occupied)



9

year old

TO



13

year old





9

year old

TO

**SAFE • SOCIALLY SCALED • SMALL
LEARNING • HEALTH/WELLNESS •
EXPRESSIVE ARTS**



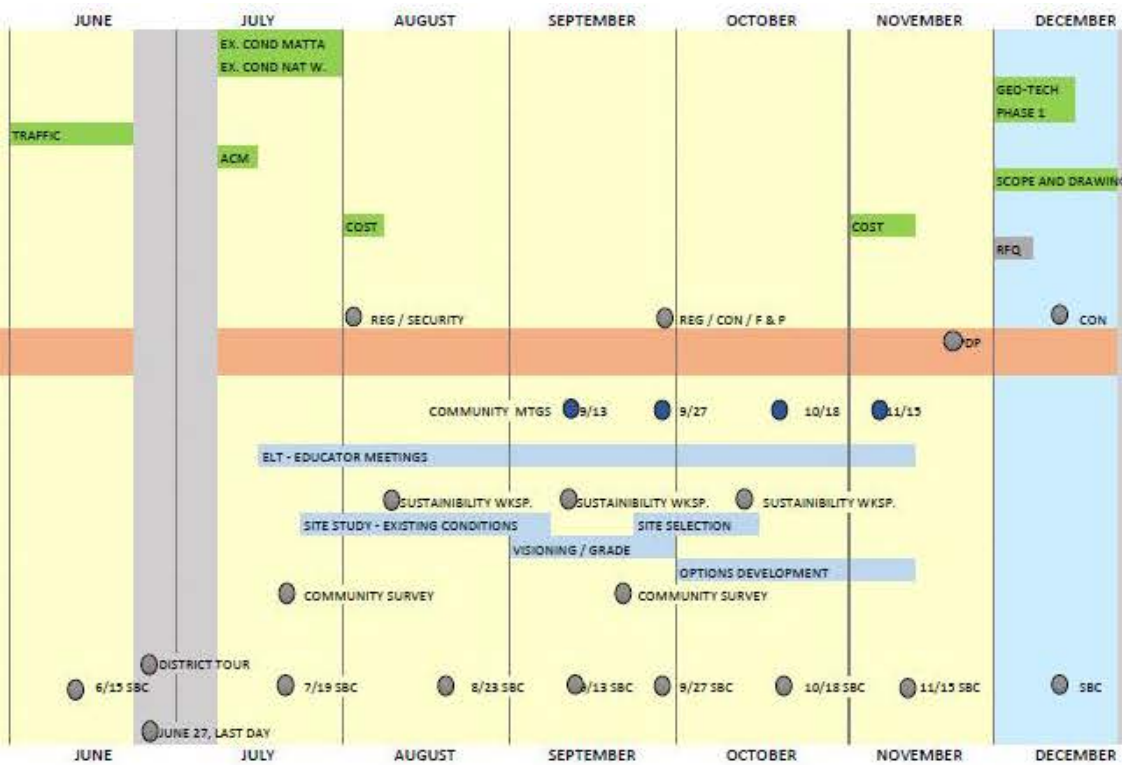
13

year old

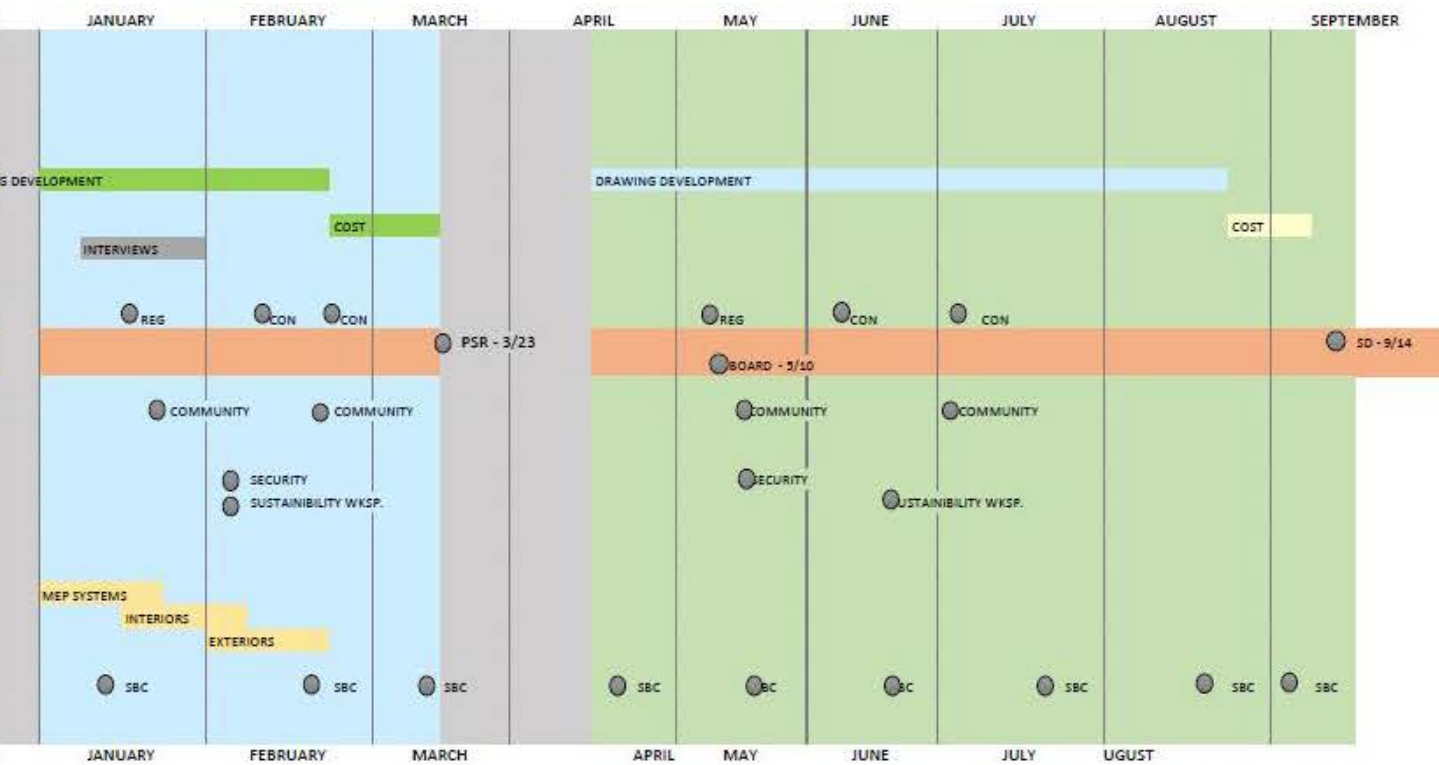


SCHEDULE / OBJECTIVES

2017

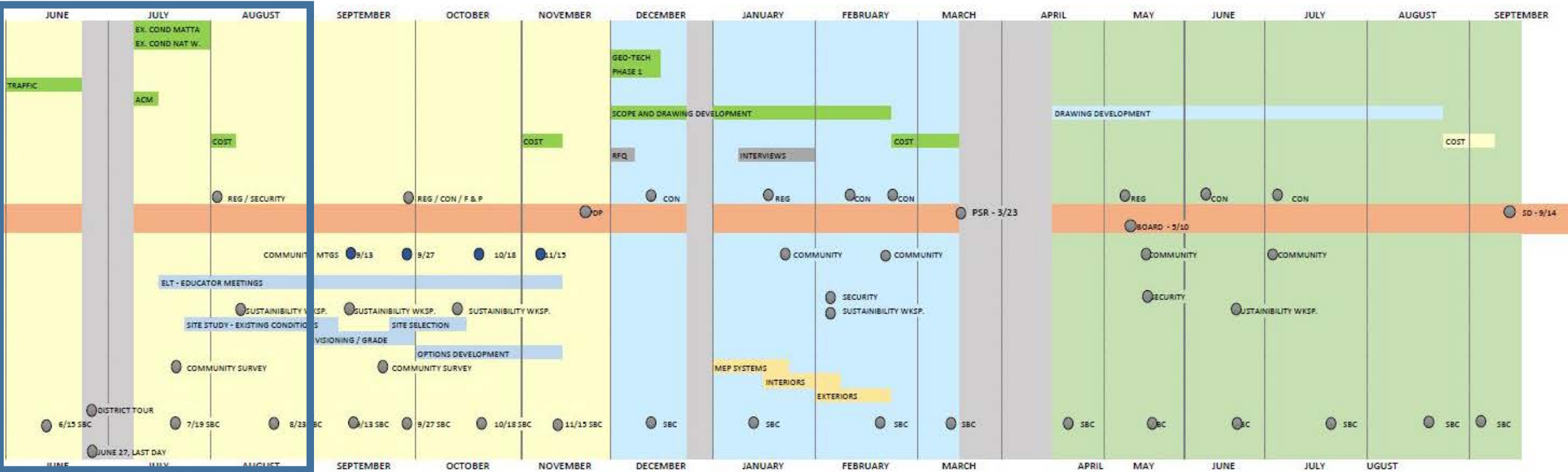


2018



SCHEDULE / OBJECTIVES

2017

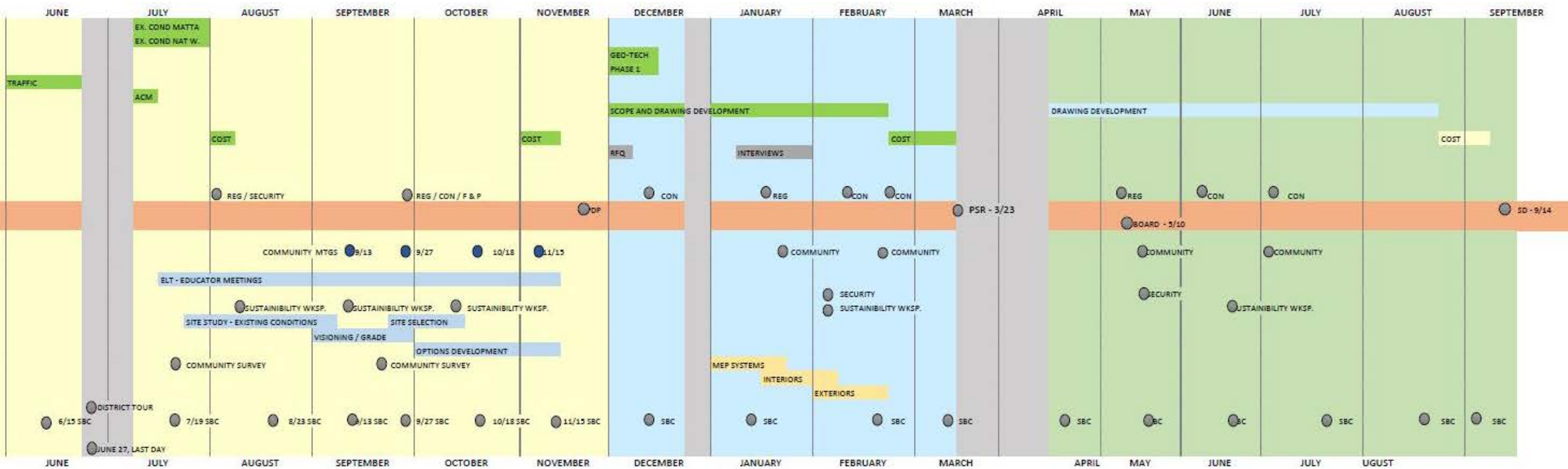


Challenges of a
Summer Start

SCHEDULE / OBJECTIVES

2017

2018

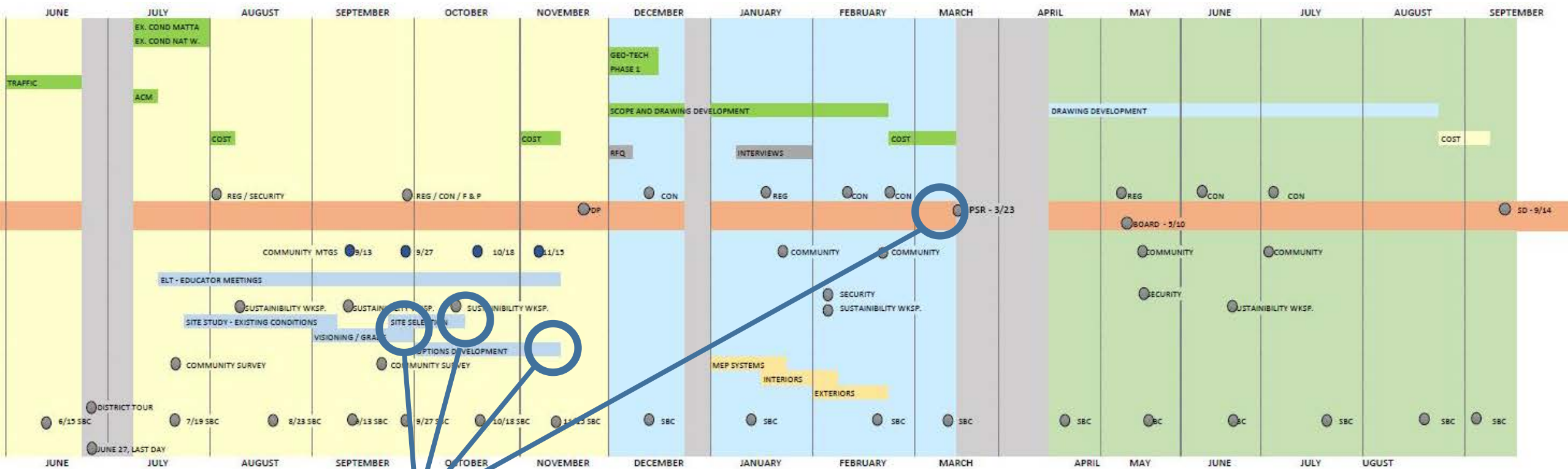


Longer Duration for Complexities

SCHEDULE / OBJECTIVES

2017

2018



Get The Word Out

SCHEDULE / OBJECTIVES

Feasibility Study (Two Major MSBA Submissions)		Schematic Design	
Preliminary Design			
<ul style="list-style-type: none">• Existing Cond's/Site Assessments• Educational/Sustainability Visioning• Educational Program (by District)• Educ Specifications/Space Needs• Develop & Assess Prelim. Options• Select Preferred Site/Plan Options	Preferred Schem. Report		
	<ul style="list-style-type: none">• Refinement of Plan Options• Scope/Systems Comparisons• Massing/Design Studies• Final Assessment & Select (1)	Schem. Design Report	<ul style="list-style-type: none">• Detailed Room Layouts• Finalize Project Scope
June '17	Nov./Dec.'17	Mar/Apr.'18	Sept.'18

SCHEDULE / OBJECTIVES

<u>Proposed Dates</u>		<u>Group(s)</u>	<u>Task / Description:</u>
<u>Thru June/July</u>			<u>Info Gathering Existing Cond's Work & Visioning Strategy</u>
Mid/Late June		DYRSD	Provide Current Educ-Plan , Calendar, Schedule, Staff/Dept. List, Provide Room Assignment Plans (incl. room no's/names/sizes), Provide Policies (incl. class size, teacher contract requirements), Provide Transit Info (walkers/bikers/bus and car riders) Begin Assembling the ELT (Educational Leadership Team)
6/15	5pm	SBC	Design Team Intro, Process/Sched. (incl. summer avail.+ traffic) Request Info (noted abv.), Set-up Cultural Tour Date Establish ELT & PR groups (early survey & notification sign-ups) Who Recommends vs. Approves Sites/Grade Config/Options
6/21	1pm	MSBA	Kick-Off Meeting
6/21 or 6/26		ELT+	Cultural Tour of Mattacheese/Wixon & Town Interests/Issues
6/27	-	-	Last Day of School
7/12	3:30pm	ELT	Visioning Strategy (incl. grade config) & Begin Assembling DWG
	5:30pm	SBC	Meeting/Updates
Late July		PR grp	Community Survey (re: initial goals/considerations/concerns)

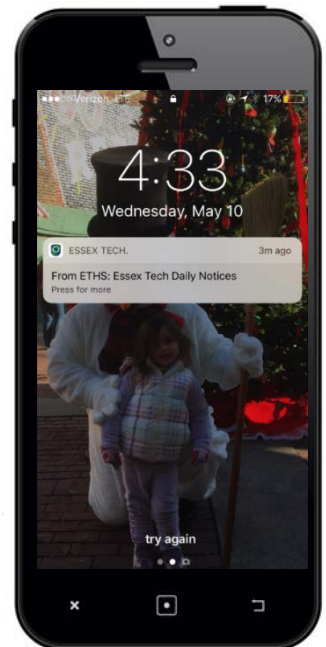
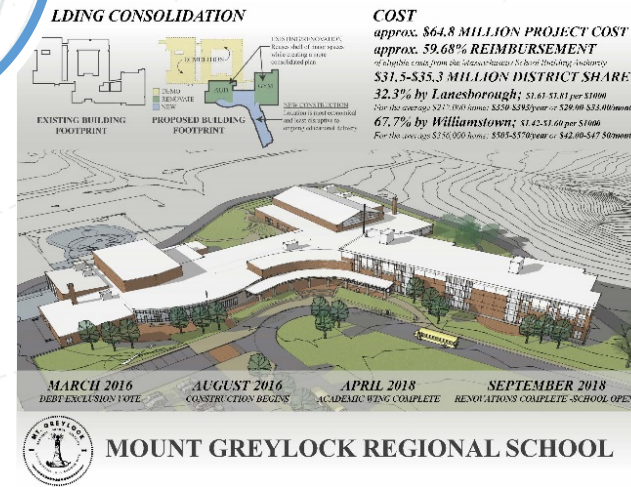
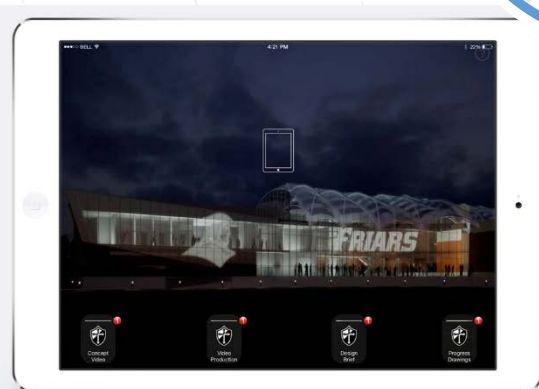
SCHEDULE / OBJECTIVES

<u>Thru August</u>			<u>Meet w/ Regulatory Groups, Start Programming & Research</u>
Early August	Dept's		Prelim. Regulatory/Security Discussions (w/ D/Y Town Dept's)
8/10	3pm	ELT	Discuss Programs/Needs, Research
Middle August	(TBD)		Sustainability Workshop I
8/23	3pm	ELT	Review Visioning, Research, Draft Space Needs & prep for Faculty
	5pm	SBC	Meeting/Updates
<u>Thru September</u>			<u>Begin Visioning/Community Outreach & Refine Educ-Program</u>
Early September	MMS		Faculty Forum / Overview
	DWG		Educ-Visioning Workshop I (both schools now, future & best prac)
	(TBD)		Sustainability Workshop II
9/20	3pm	ELT	Review Visioning I outcomes, refine Visioning II, prep for Survey
	5pm	SBC	Meeting/Updates
	7pm	Towns	Comm. Meeting/Workshop I (focus on grade config decision), Alt?
Mid. September	DWG		Educ-Visioning Workshop II (goals/values, incl. combined grades)
Late September	Dept's		Follow-Up Regulatory (incl. Fire/Police & Conservation Comm)
			Community Survey (key criteria for assessing config's/options)
9/27	3pm	ELT	Refine Educational Program & Confirm Space Needs
	5pm	SBC	Meeting/Updates
	7pm	Towns	Comm. Meeting/Workshop II (focus on EWG & goals/values), Alt?
Late September	DWG		Educ-Visioning Workshop III (guiding principles & dsqn patterns)

SCHEDULE / OBJECTIVES

<u>Thru October</u>			<u>Site Assessments & Options Development w/ Community</u>
Early October	ELT		Refine Educational Program & Confirm Space Needs
Mid. October	DYRSD		Approve Prelim. Educ-Program, Grade Config. & Space Summary
	(TBD)		Sustainability Workshop III
10/18	3pm	ELT	Review Options per Educ-Program
	5pm	SBC	Meeting/Updates (select preferred site)
	7pm	Towns	Comm. Meeting/Workshop (focus on pref. site & options), Alt?
Late October	SBC		Tour Example Schools
<u>Thru November</u>			<u>Options Evaluations w/ Community & Develop PDP Submission</u>
Early November	PE/PMA		Provide Preliminary Costs for Each Option
11/15	3pm	ELT	(meeting if required)
	5pm	SBC	Meeting/Updates (select preferred options, approve submission)
	7pm	Towns	Community Meeting/Workshop (update on selection/submission)
Mid. November	PE/PMA		Assemble PDP Submission
11/21	4pm	MSBA	PDP Submission Due

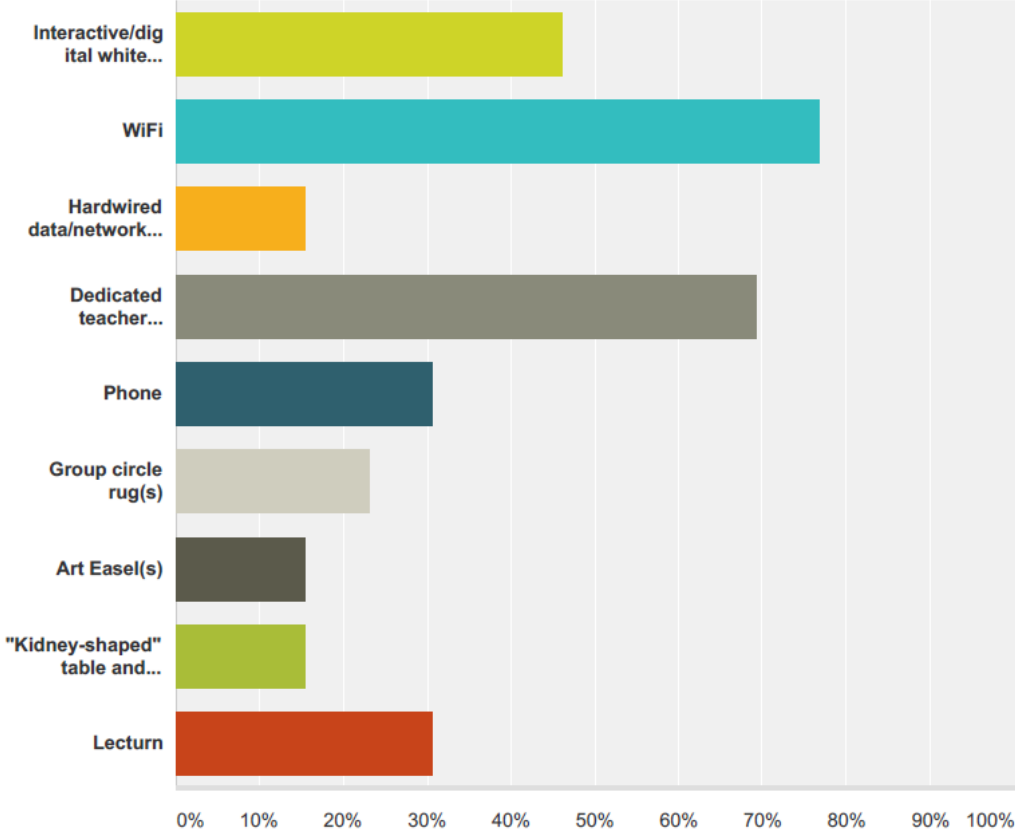
ENGAGING THE FULL COMMUNITY

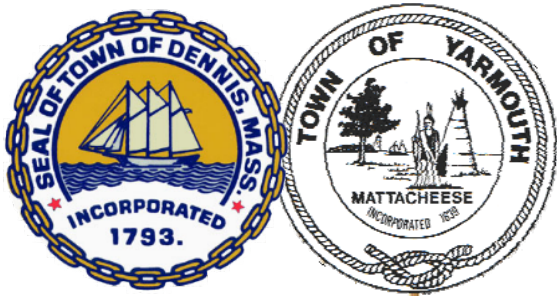


REACHING ALL STAKEHOLDERS VIA SURVEYMONKEY

Q15 What other equipment and features should there be in the classroom? (Check all that apply.)

Answered: 13 Skipped: 4





VISIONING PROCESS

**DENNIS-YARMOUTH'S
CORE EDUCATIONAL
LEADERSHIP TEAM**

**DESIGN
WORKING
GROUP**

**DENNIS-YARMOUTH
COMMUNITY GROUPS**

MATTACHEESE MIDDLE SCHOOL

**CURRENT ED-PLAN,
GOALS/OBJECTIVES
BEST PRACTICES &
FUTURE OF LRN'G
STE(A)M LEARNING**

**PRIORITY
GOALS/VALUES
GRADE/SCHOOL
CONFIGURATION**

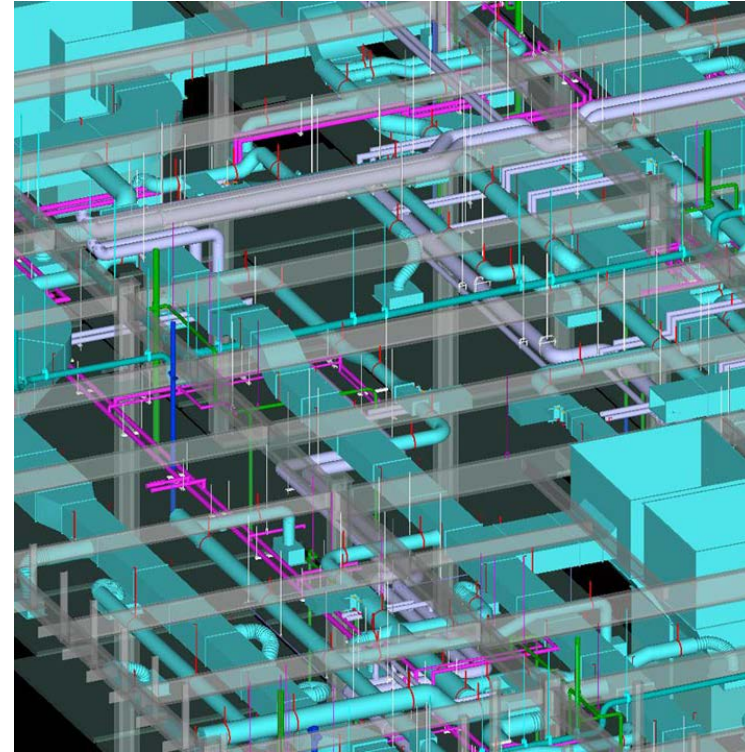
**DESIGN PATTERNS
GUIDING PRINCIPLES
& PRIORITIES
KEY SPACES &
ADJACENCIES**

HOW DO FOCUS GROUPS WORK?



- Builds on Visioning Workshops & complements Programming
- Defines individual spaces,
 - performance attributes
 - relationships/adjacencies
- 2 to 3 contiguous days in total
- Small groups of 6 – 8 best
- 30 minutes - 1 hour per group; ten minute transition for contingency
- On-line survey broadens input
- Iterative process





EARLY DESIGN DETERMINES **70-90%** OF IMPACT

SUSTAINABILITY WORKSHOPS

DEVELOP PRIORITIES

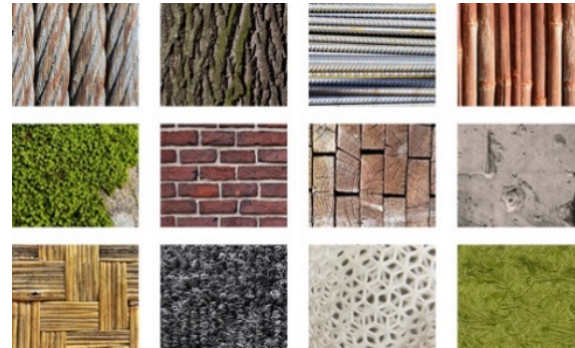
	BPS		BAA		Combined
Energy	6	33%	3	20%	27%
IEQ	3	17%	4	27%	22%
Materials	5	28%	0	0%	14%
Waste	3	17%	1	7%	12%
Connection to Nature	0	0%	3	20%	10%
Water	1	6%	2	13%	9%
Active Design	0	0%	2	13%	7%
Total Votes	18		15		



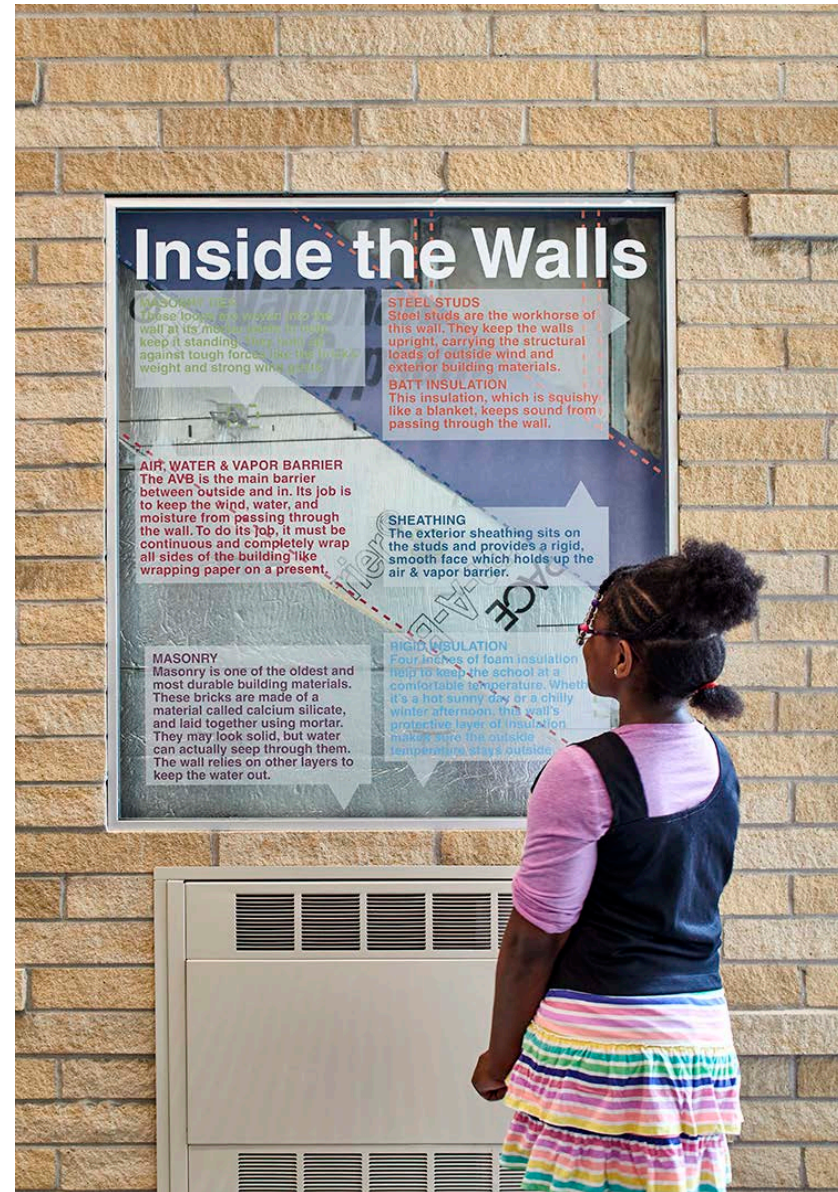
SUSTAINABILITY WORKSHOPS

DEVELOP STRATEGIES

1. Daylight
2. Mechanical Systems
3. Equipment/AV
4. Food Service
5. Water
6. Materials



BUILDING AS A TEACHING TOOL



Educational Visioning & Programming Summary v2

Mattacheese Middle School, Dennis-Yarmouth Massachusetts

Overall Feasibility/Schematic Design Process

The Feasibility Study (**FS**), typically 6-8 months, is the earliest and most critical part of the design process. This phase includes information gathering, investigation/assessment of current conditions, establishment of goals/objectives, definition of program and needs, development of planning options and, ultimately selection of a preferred solution.

The MSBA defines the FS phase in two parts; the Preliminary Design Program (**PDP**) and subsequent Preferred Schematic Report (**PSR**). Upon completion of the PSR, the District participates in the Facilities Assessment Subcommittee (**FAS**) meeting, where MSBA Board Members vet the Educational Program and Preferred Solution (Plans). If the FAS Panel is satisfied, the project would move into Schematic Design (**SD**), where it is fully defined and scoped for the Project Funding Agreement (**PFA**). Each step requires MSBA approval to proceed and ultimately must be approved by the City/Town Vote to continue into full Design Development, Construction Documents, Bidding and Construction.

Feasibility Study (Two Major MSBA Submissions)		Schematic Design	
Preliminary Design			
<ul style="list-style-type: none"> Existing Cond's/Site Assessments Educational/Sustainability Visioning Educational Program (by District) Educ Specifications/Space Needs Develop & Assess Prelim. Options Select Preferred Site/Plan Options 	Preferred Schem. Report		
	<ul style="list-style-type: none"> Refinement of Plan Options Scope/Systems Comparisons Massing/Design Studies Final Assessment & Select (1) 	Schem. Design Report	<ul style="list-style-type: none"> Detailed Room Layouts Finalize Project Scope
June '17	Nov./Dec.'17	Mar/Apr.'18	Sept.'18

The First Half of the Feasibility Study (the PDP)

As information gathering and assessment of existing conditions occur, our team also begins to assess the District's educational practices, its goals and objectives for the future, including curriculum, organizational models, grade structures, teaming and teaching/learning methods. This typically originates from the District's Educational Plan, if it exists, but must be refined and articulated by the District (not the architect) in the form of the MSBA's **Educational Program** (narrative). The MSBA considers the Ed-Program the basis for design and holds the District and Design Team accountable for its contents and the responsiveness of planning options to meet its objectives.

We facilitate a process to help the District articulate the Educational Program by assembling an educational sub-group or Educational Leadership Team (ELT) that understands current programs and initiatives, can help shape the Visioning Process to define goals, make programming decisions and participate in writing the Educational Program narrative itself. This process includes simultaneous Visioning and Programming.

New Vista Design (NVD) leads the Visioning Process that will engage a broader working group or Design Work Group (DWG) of assembled City, School & Community representatives in a series of workshops to explore current 21st century learning/best

practices, your current practices, educational goals/objectives and how the design can best support those. Perkins Eastman (PE) will begin the Programming Process, which includes analysis of your programs, coordinates adjustments per your goals and projected enrollment and tabulates program requirements in the form of a Space Summary. Both NVD and PE will work with the ELT group to ensure these come together and are reflected in the District's written Educational Program. The stakeholder groups that are part of the Visioning and Programming Process include;

Educational Leadership Team (ELT) – usually 4 to 6 key staff and core decision makers for the educational program; typically individuals who provide leadership within the District/school and the individual(s) involved in scheduling.

Design Working Group (DWG) – typically 25 to 50 thought leaders and engaged school and community representatives that reflect the broader District objectives and can help connect the vision to ideas that are appropriate for this school. The group should include SBC representatives, district and school leadership, teachers, parents, interested and engaged students and community partners or leaders.

Faculty / User Groups – depending on the size of staff and depth of engagement desired, full departments or department representatives would participate in focus group meetings (by subject) during the preliminary design program phase. We often also include general updates and/or larger format presentations.

Community Stakeholders – full and diverse community representation is intended within the Educational Work Group, but the overall process (not just the educational programming outlined here), will engage individual and/or full community groups throughout the design.

Suggested Educational Leadership Team Participants

1. **Carol Woodbury** (DYRSD Superintendent); woodburc@dy-regional.k12.ma.us
508.398.7604 (or decision making representative)
2. **Ann Knell** (MMS Principal); 508.778.7979
3. **Sean Owen** (NWIS Principal); 508.398.7696
4. **Leila Maxwell** (Dir. Of STEM); 508.398.7620
5. **Sherry Santini** (Dir. Of Humanities); 508.398.7621
6. **Robert Bell** (Perkins Eastman, Principal in Charge, Educational Planner);
r.bell@perkinseastman.com, 617.712.2115 (c.781.983.2083)
7. **Jana Silsby** (Perkins Eastman Project Architect); j.silsby@perkinseastman.com,
857.334.3139
8. **David Stephen** (New Vista, Educational Visioning & Program Specialist);
david@newvistadesign.net, 617.733.0847
9. **Walter Hartly** (PMA, Owners Project Manager); whartley@pmaconsultants.com,
781.519.1078 (c. 508.496.3503)

Copies To/Other Occasional Participants:

10. **Brian Carey** (School Committee Chair);
11. **Joseph Tierney** (School Building Committee Chair, SC Member);
12. **Chris Carroll** (PMA, OPM Principal in Charge); ccarroll@pmaconsultants.com
13. **Dan Colli** (Perkins Eastman Project Manager); d.colli@perkinseastman.com,
617.712.2151

Proposed Dates Group(s) Task / Description:

Thru June/July **Info Gathering Existing Cond's Work & Visioning Strategy**

Mid/Late June	DYRSD	Provide Current Educ-Plan , Calendar, Schedule, Staff/Dept. List, Provide Room Assignment Plans (incl. room no's/names/sizes), Provide Policies (incl. class size, teacher contract requirements), Provide Transit Info (walkers/bikers/bus and car riders) Begin Assembling the ELT (Educational Leadership Team)
6/15 5pm	SBC	Design Team Intro, Process/Sched. (incl. summer avail.+ traffic) Request Info (noted abv.), Set-up Cultural Tour Date Establish ELT & PR groups (early survey & notification sign-ups) Confirm Who Recommends vs. Approves Sites/Config/Options
6/21 1pm	MSBA	Kick-Off Meeting
6/21 or 6/26	ELT+	Cultural Tour of Mattacheese/Wixon & Town Interests/Issues
6/27 -	-	Last Day of School
7/12 3:30pm	ELT	Visioning Strategy (incl. grade config) & Begin Assembling EWG
5:30pm	SBC	Meeting/Updates
Late July	PR grp	Community Survey (re: initial goals/considerations/concerns)

Thru August **Meet w/ Regulatory Groups, Start Programming & Research**

Early August	Dept's	Prelim. Regulatory/Security Discussions (w/ D/Y Town Dept's)
8/10 3pm	ELT	Discuss Programs/Needs, Research
Mid. August	(TBD)	Sustainability Workshop I
8/23 3pm	ELT	Review Visioning, Research, Draft Space Needs & prep for Faculty
5pm	SBC	Meeting/Updates

Thru September **Begin Visioning/Community Outreach & Refine Educ-Program**

Early September	MMS	Faculty Forum / Overview
	DWG	Educ-Visioning Workshop I (both schools now, future & best prac)
	(TBD)	Sustainability Workshop II
9/20 3pm	ELT	Review Visioning I outcomes, refine Visioning II, prep for Survey
5pm	SBC	Meeting/Updates
7pm	Towns	Comm. Meeting/Workshop I (focus on grade config decision), Alt?
Mid. September	DWG	Educ-Visioning Workshop II (goals/values, incl. combined grades)
Late September	Dept's	Follow-Up Regulatory (incl. Fire/Police & Conservation Comm) Community Survey (key criteria for assessing config's/options)
9/27 3pm	ELT	Refine Educational Program & Confirm Space Needs
5pm	SBC	Meeting/Updates
7pm	Towns	Comm. Meeting/Workshop II (focus on EWG & goals/values), Alt?
Late September	DWG	Educ-Visioning Workshop III (guiding principles & dsgrn patterns)

Thru October **Site Assessments & Options Development w/ Community**




Early October	ELT	Refine Educational Program & Confirm Space Needs
---------------	-----	---



Mid. October	DYRSD	Approve Prelim. Educ-Program, Grade Config. & Space Summary
	(TBD)	Sustainability Workshop III
10/18 3pm	ELT	Review Options per Educ-Program
5pm	SBC	Meeting/Updates (select preferred site)
7pm	Towns	Comm. Meeting/Workshop (focus on pref. site & options), Alt?
Late October	SBC	Tour Example Schools

Thru November Options Evaluations w/ Community & Develop PDP Submission

Early November	PE/PMA	Provide Preliminary Costs for Each Option
11/15 3pm	ELT	(meeting if required)
5pm	SBC	Meeting/Updates (select preferred options, approve submission)
7pm	Towns	Community Meeting/Workshop (update on selection/submission)
Mid. November	PE/PMA	Assemble PDP Submission
11/21 4pm	MSBA	PDP Submission Due

 Project Baseline Bar
  Remaining Work
  Baseline Milestone
 Page 1 of 1
 TASK filter: Hide PMA Resource Bars.
 Actual Work
 Critical Remaining Work
 Milestone
 © Oracle Corporation



Mattacheese Middle School Project - Plan/Decision Matrix



PMA Consultants

Responsibility	Action Required	Due Date	Status
District & PMA	SBC Meeting Review DSP Meeting	Wednesday, May 3, 2017	Complete
District & PMA	Designer Selection Panel Interviews - Interview Shortlisted Firms	Tuesday, May 16, 2017	Complete
District & PMA	Contract Negotiation (after DSP selection)	Tuesday, May 23, 2017	Complete
District	Contract Execution (after Contract Negotiation)	Thursday, June 15, 2017	
Architect, PMA, District	"Kick-Off" Meeting with Designers	Thursday, June 15, 2017	
Architect, PMA, District	Education Program Refined with Designer Input	Friday, October 6, 2017	
Building Committee	Final Acceptance of Education Program	Friday, October 13, 2017	
Architect, PMA, District	Preliminary Evaluation of Alternatives	Wednesday, October 18, 2017	
Architect	Draft Initial Space Summary	Thursday, October 19, 2017	
Architect, PMA, District	Cost & Schedule Analysis of PDP Alternatives	Wednesday, November 8, 2017	
Architect, PMA, District	Final Evaluation of Alternatives	Thursday, November 15, 2018	
Building Committee	Recommend Preferred Solution (SBC VOTE REQUIRED!)	Wednesday, November 15, 2017	
Architect, PMA, District	Finalize & Submit Design Program to MSBA	Tuesday, November 21, 2017	
MSBA	MSBA Review Period	Tuesday, December 12, 2017	
Architect, PMA, District	Respond to MSBA PDP Review Comments	Friday, December 22, 2017	
Architect, PMA, District	Identification & Development of Preferred Solution	Thursday, March 1, 2018	
Building Committee	Compile and Submit PSR (SBC VOTE REQUIRED)	Thursday, March 15, 2018	
Architect, PMA, District	MSBA Facilities Assessment Subcommittee Meeting	Wednesday, March 28, 2018	
MSBA	MSBA Board of Directors Approval of PSR	Wednesday, May 9, 2018	