



**PERKINS —
EASTMAN**

Photo courtesy of TripAdvisor



DENNIS-YARMOUTH SCHOOL PROJECT

SCHOOL BUILDING COMMITTEE

February 15, 2018



SCHEDULE AND DECISIONS

Wednesday, Jan. 10 – SBC (review options - preferred site)

Wednesday, Jan. 31 – Abutters Meeting - I

Wednesday, Jan. 31 – SBC (option refinements, massing & shadow studies)

Thursday, Feb. 15 – SBC (options refinements + systems & energy modeling)

Wednesday, Feb. 28 - SBC Selection of Preferred Solution

Wednesday, Mar. 7- SBC (final scope review, what's in/what's out)

Wednesday, Mar. 7 - Local Actions & Approvals of Solution (BoS/Fin Com/SC)

Wednesday, Apr. 11 - SBC (cost discussion)

Monday, Apr 23 - Joint BoS, Finance, School Committee (update)

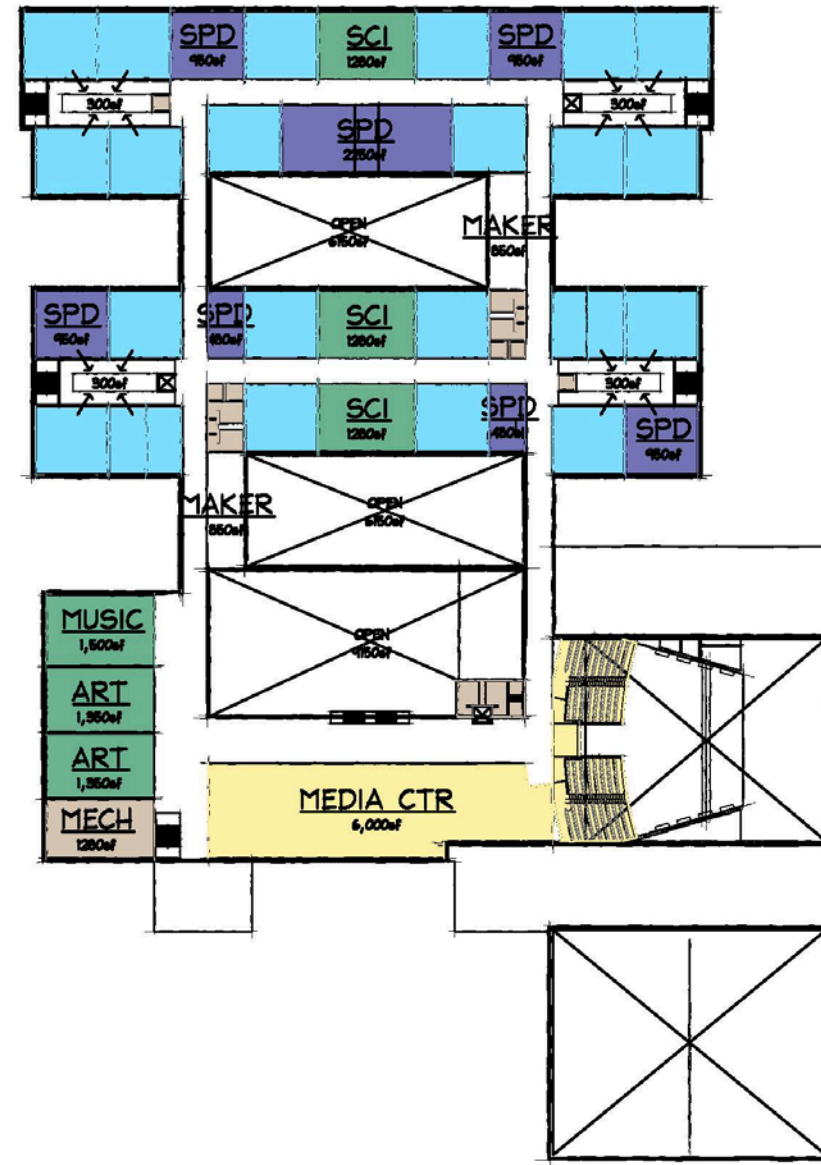
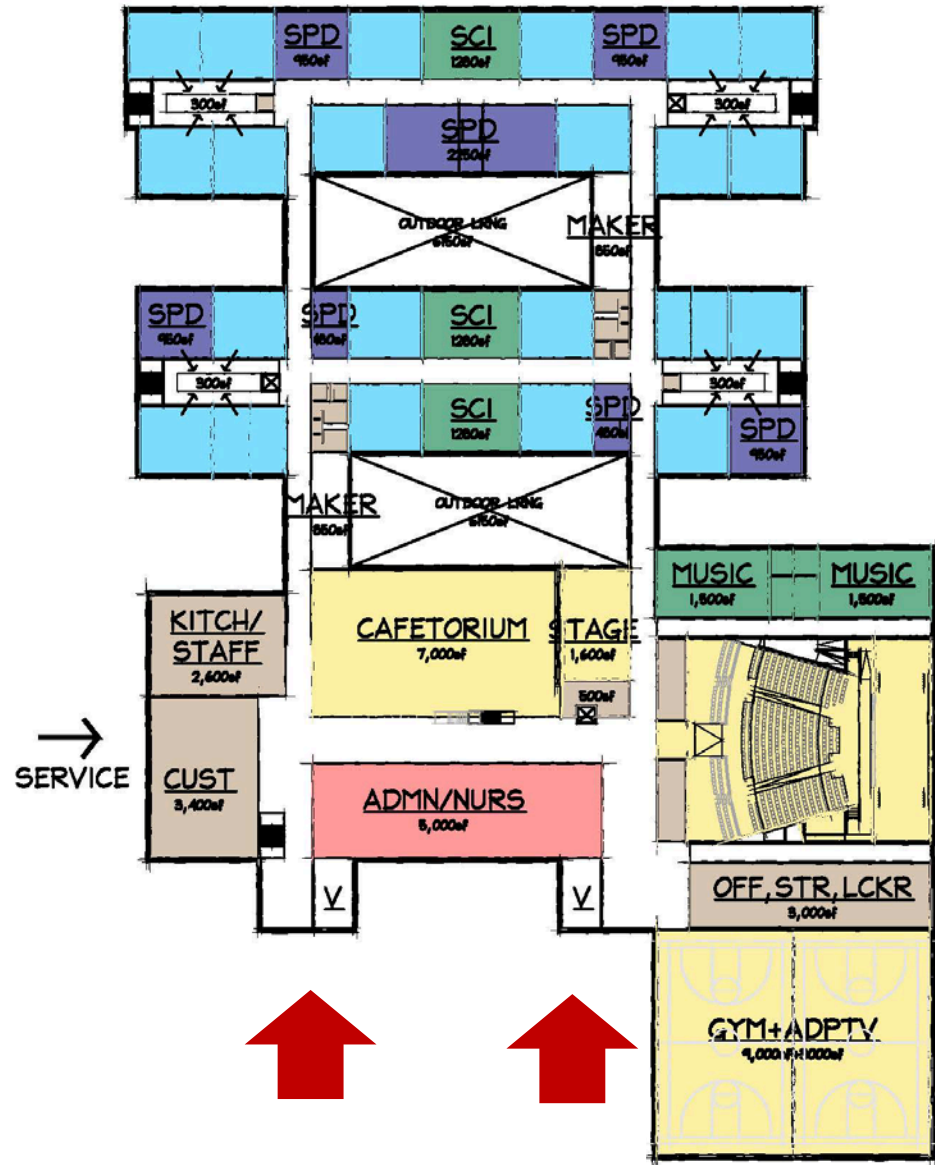
Wednesday, Apr. 25 – SBC (vote to submit Preferred Schematic Report)

Wednesday, May 9 - Compile & Submit PSR

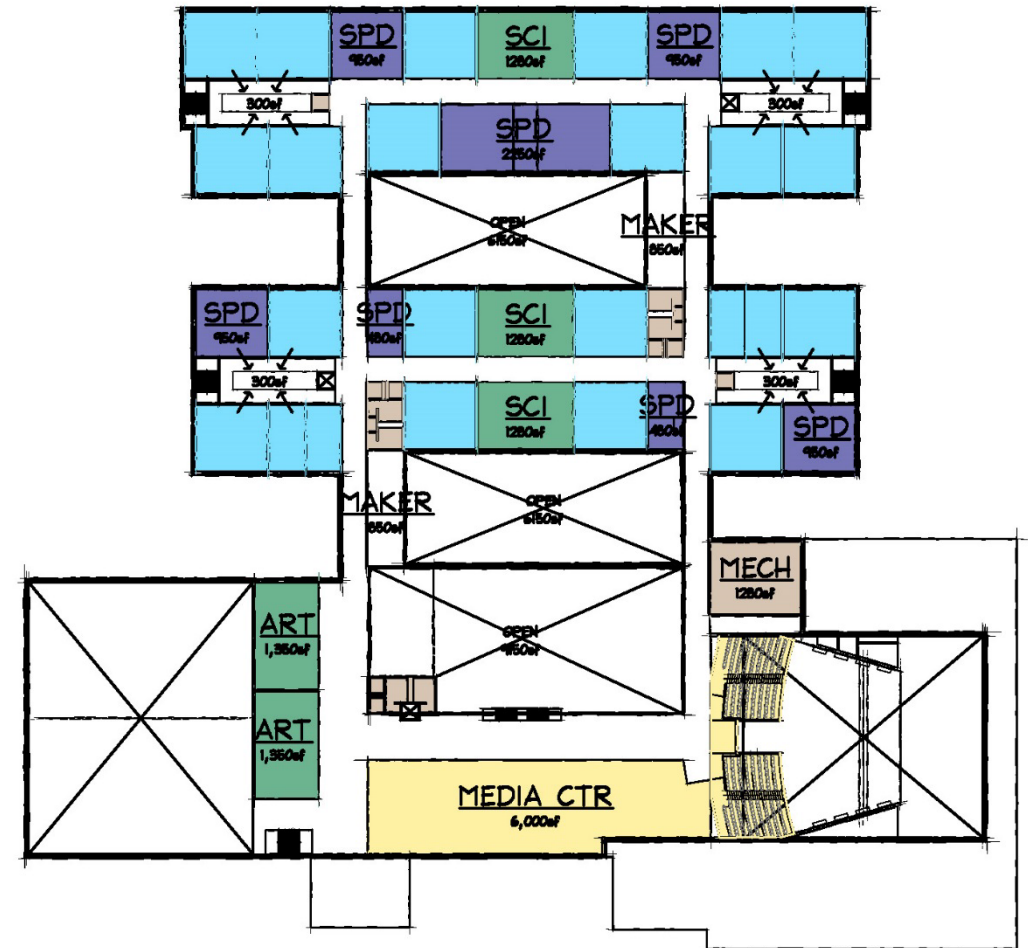
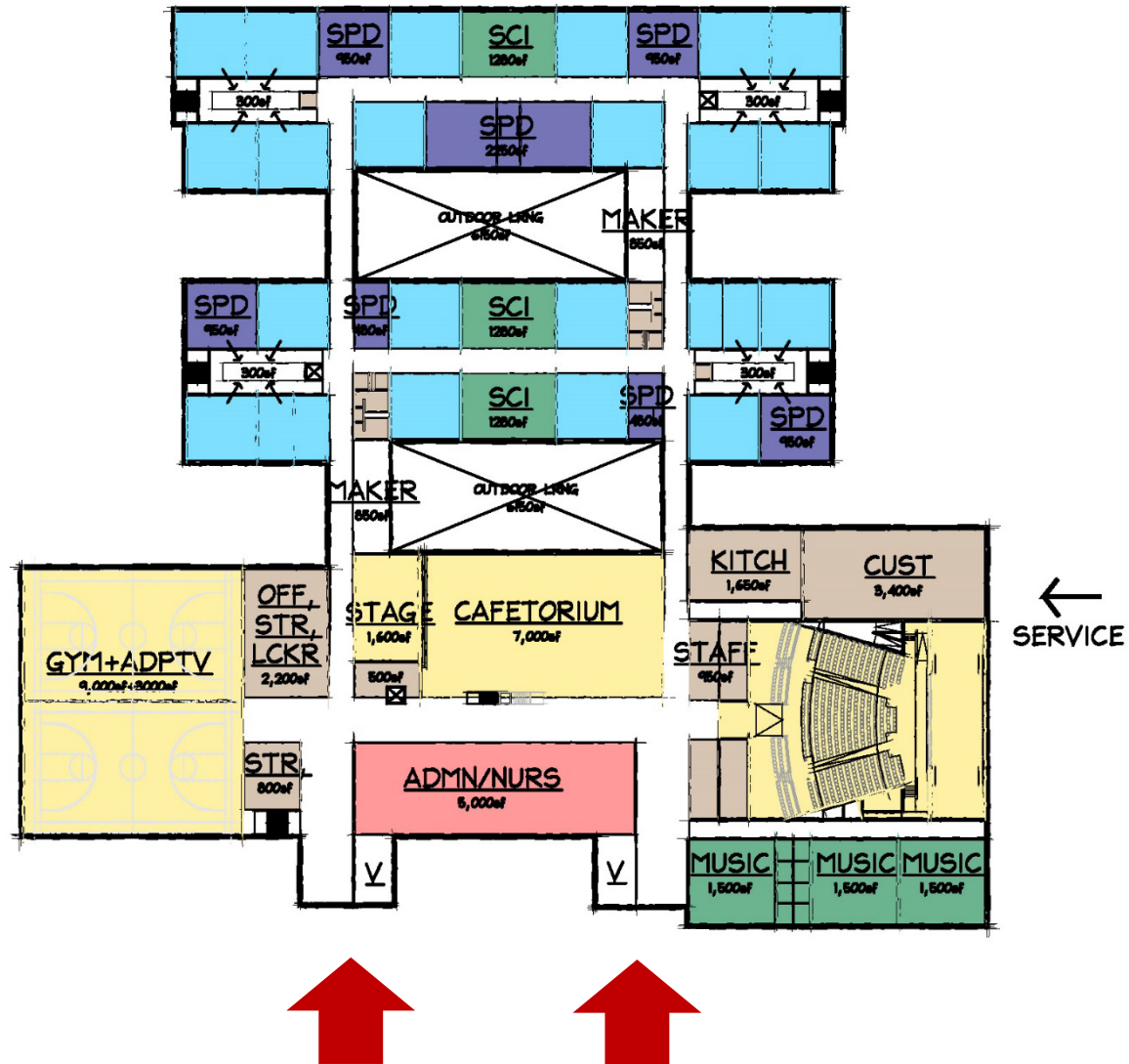
Wednesday, May 23 - MSBA Facilities Assessment Subcommittee Meeting

Wednesday, Jun. 27 - MSBA Board of Directors (for PSR approval)

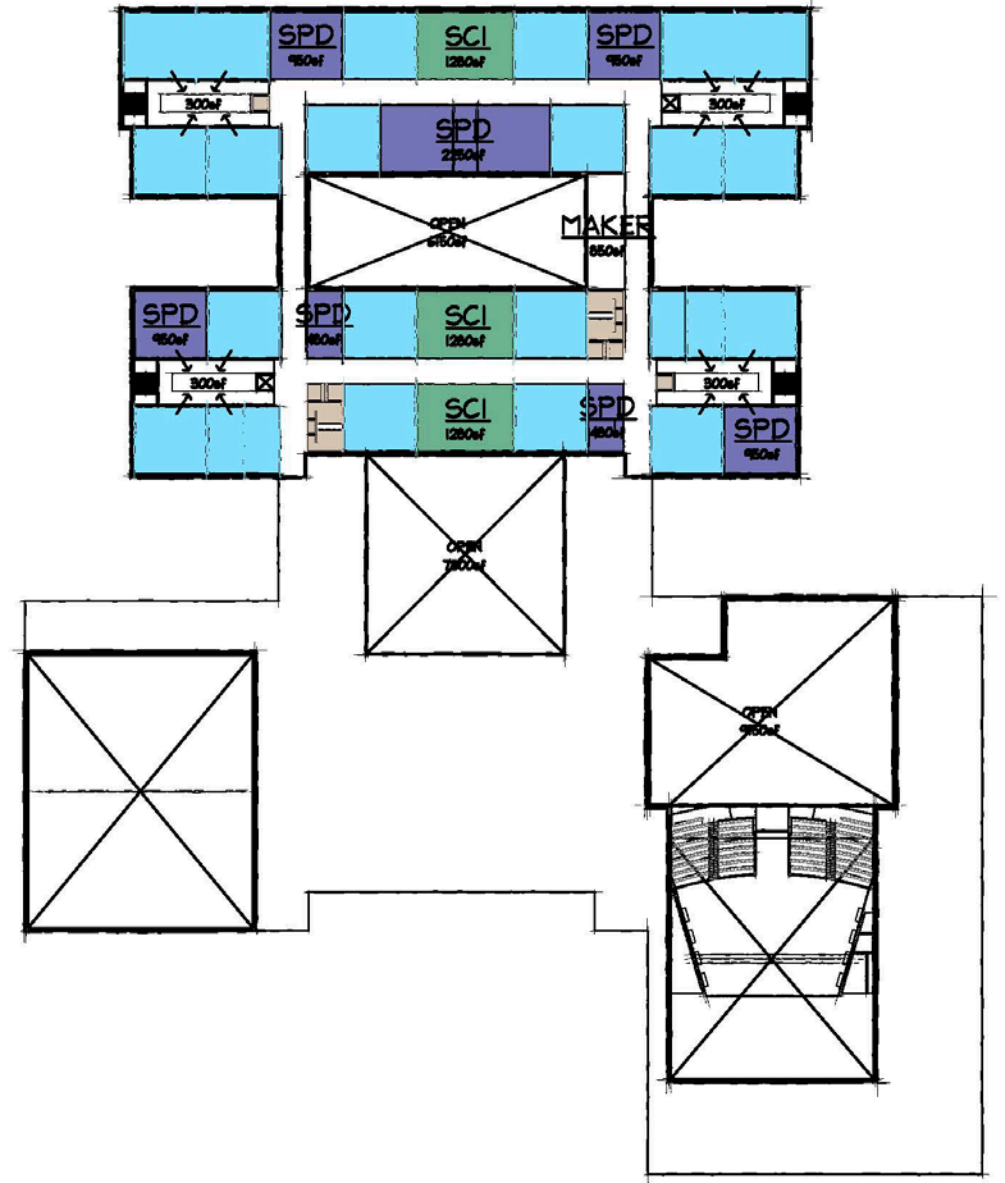
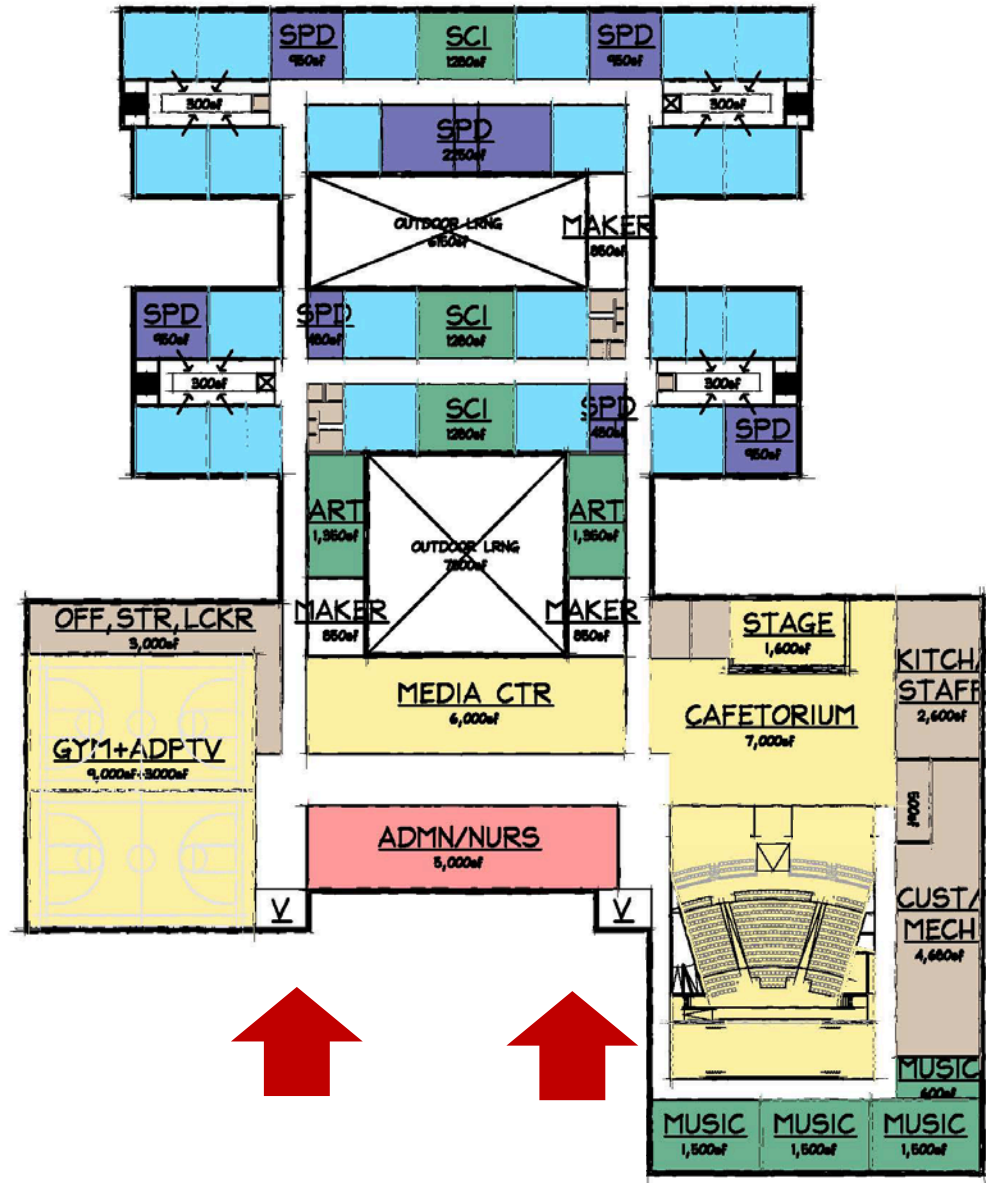
COMMUNITY FRONT - A



COMMUNITY FRONT - B



COMMUNITY FRONT - C



PREFERRED OPTIONS (GR. 4-7)

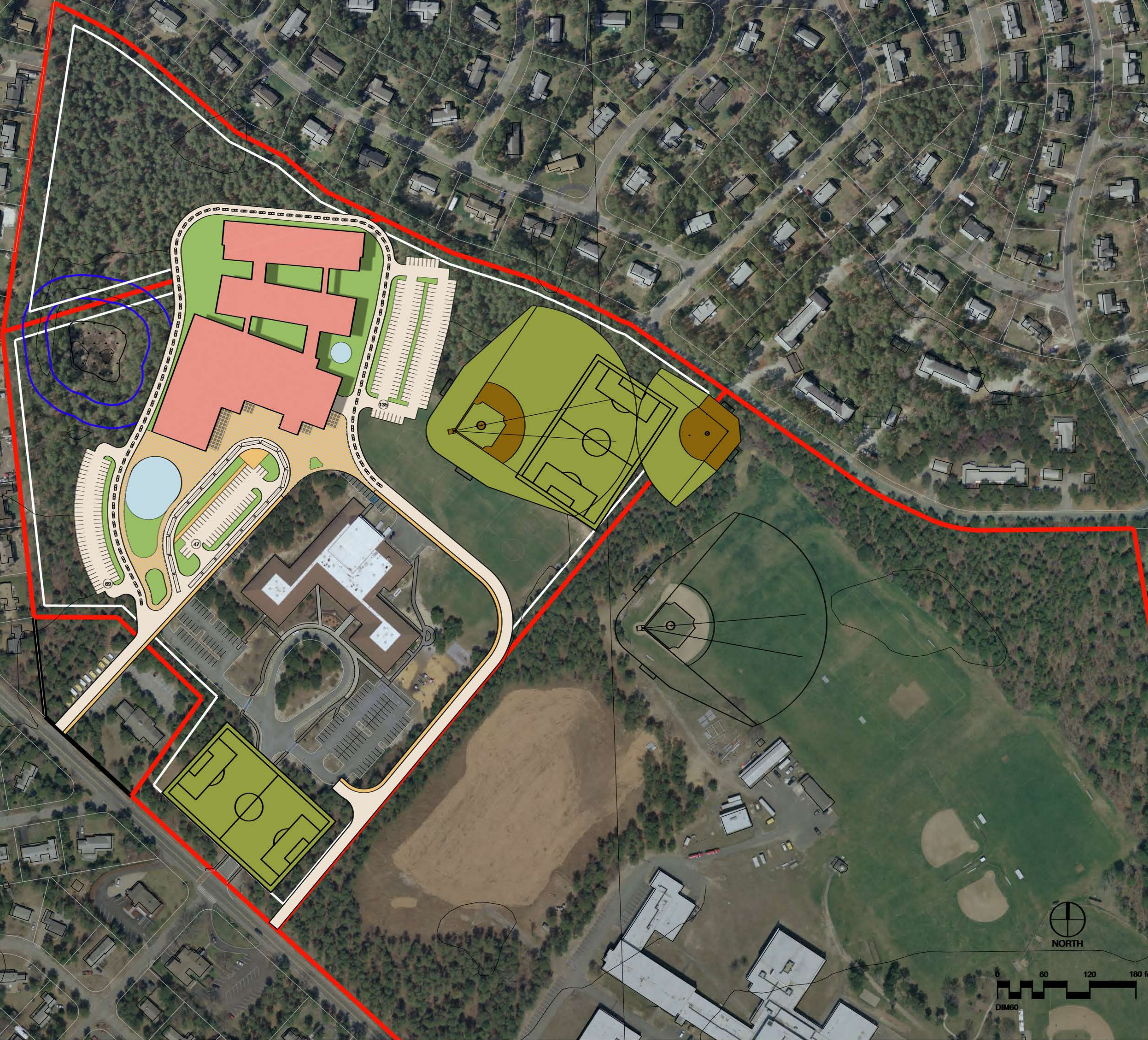
 <p>Preferred Plan</p>	 <p>Not Ideal Plan</p>	 <p>Preferred Plan</p>	 <p>Not Ideal Plan</p>	 <p>Too much Risk</p>	 <p>Encroaches ES</p>	 <p>Not Ideal Plan</p>
<p>S2 COMMUNITY FRONT STATION AVE SITE-WEST</p>	<p>S2 COMM MID+CRT YDS STATION AVE SITE-WEST</p>	<p>S4 COMMUNITY FRONT STATION AVE SITE-BACK</p>	<p>S4 COMM MID+CRT YDS STATION AVE SITE-BACK</p>	<p>S6 COMMUNITY FRONT STATION AVE SITE-MID.</p>	<p>S6 COMM MID+CRT YDS STATION AVE SITE-MID.</p>	<p>S6 COMMUNITY SPINE STATION AVE SITE-MID.</p>
<p>Relatively Flat Site, 70 acres total (40 useable with approximately 25 developed)), Limited Constraints (Aquafer Protection Distr. and Adjacent Wetland)</p>						
<p><u>Site/Traffic Considerations:</u> Dedicated Access Long Car Que (Off-Street) Limited Field Disturbance Limited Campus Connect'n No Civic Presence Proximity to Homes Proximity to SES Major Tree Clearing Req'd</p>	<p><u>Site/Traffic Considerations:</u> Dedicated Access Long Car Que (Off-Street) Limited Field Disturbance Limited Campus Connect'n No Civic Presence Proximity to Homes Major Tree Clearing Req'd</p>	<p><u>Site/Traffic Considerations:</u> Modest Field Disturbance Long Car Que (Off-Street) Comb./Relocated Access Modest Campus Connect'n No Civic Presence Proximity to Apartments Solar Field Approach Pinch Major Tree Clearing Req'd</p>	<p><u>Site/Traffic Considerations:</u> Modest Field Disturbance Long Car Que (Off-Street) Comb./Relocated Access Modest Campus Connect'n No Civic Presence Proximity to Maintenance Solar Field Approach Pinch Major Tree Clearing Req'd Major Int. Traffic Impact</p>	<p><u>Site/Traffic Considerations:</u> No Field Replication Req'd Moderate Car Que (Off-St) Additional Access Point Good Campus Connectivity Civic Presence/Frontage Solar Array Relocation Moderate Tree Clearing Major Int. Traffic Impact</p>	<p><u>Site/Traffic Considerations:</u> No Field Replication Req'd Moderate Car Que (Off-St) Comb./Relocated Access Good Campus Connectivity Civic Presence/Frontage Proximity to SES Solar Array Relocation Moderate Tree Clearing Modest Int. Traffic Impact</p>	<p><u>Site/Traffic Considerations:</u> No Field Replication Req'd Minimal Car Que (Off-St) Comb./Relocated Access Good Campus Connectivity Civic Presence/Frontage Solar Array Relocation Moderate Tree Clearing</p>
<p><u>Plan Considerations:</u> One School Look/Sep. Feel Cont. CRs/Config Flexibility Consolidated Comm Zone Admin Separate from CRs Closed Court Yards (Maint)</p>	<p><u>Plan Considerations:</u> Two School Look and Feel Sep. CR Wings (not as Flex) Consolidated Comm Zone Admin Connected to CRs No Crt Yd Contain (Maint)</p>	<p><u>Plan Considerations:</u> One School Look/Sep. Feel Cont. CRs/Config Flexibility Consolidated Comm Zone Admin Separate from CRs Closed Court Yards (Maint)</p>	<p><u>Plan Considerations:</u> Two School Look and Feel Sep. CR Wings (not as Flex) Consolidated Comm Zone Admin Connected to CRs No Crt Yd Contain (Maint)</p>	<p><u>Plan Considerations:</u> One School Look/Sep. Feel Cont. CRs/Config Flexibility Consolidated Comm Zone Admin Separate from CRs Closed Court Yards (Maint)</p>	<p><u>Plan Considerations:</u> Two School Look and Feel Sep. CR Wings (not as Flex) Consolidated Comm Zone Admin Connected to CRs No Crt Yd Contain (Maint)</p>	<p><u>Plan Considerations:</u> Two School Look and Feel Cont. CRs/Config Flexibility Spread Out Comm Zone Admin Separate from CRs Semi-Closed Crt Yd (Maint) Main Entries Not in Front</p>
<p><u>Cost Considerations:</u> Total Cost District Share Operations</p>	<p><u>Cost Considerations:</u> Total Cost District Share Operations</p>	<p><u>Cost Considerations:</u> Total Cost District Share Operations</p>	<p><u>Cost Considerations:</u> Total Cost District Share Operations</p>	<p><u>Cost Considerations:</u> Total Cost District Share Operations</p>	<p><u>Cost Considerations:</u> Total Cost District Share Operations</p>	<p><u>Cost Considerations:</u> Total Cost District Share Operations</p>



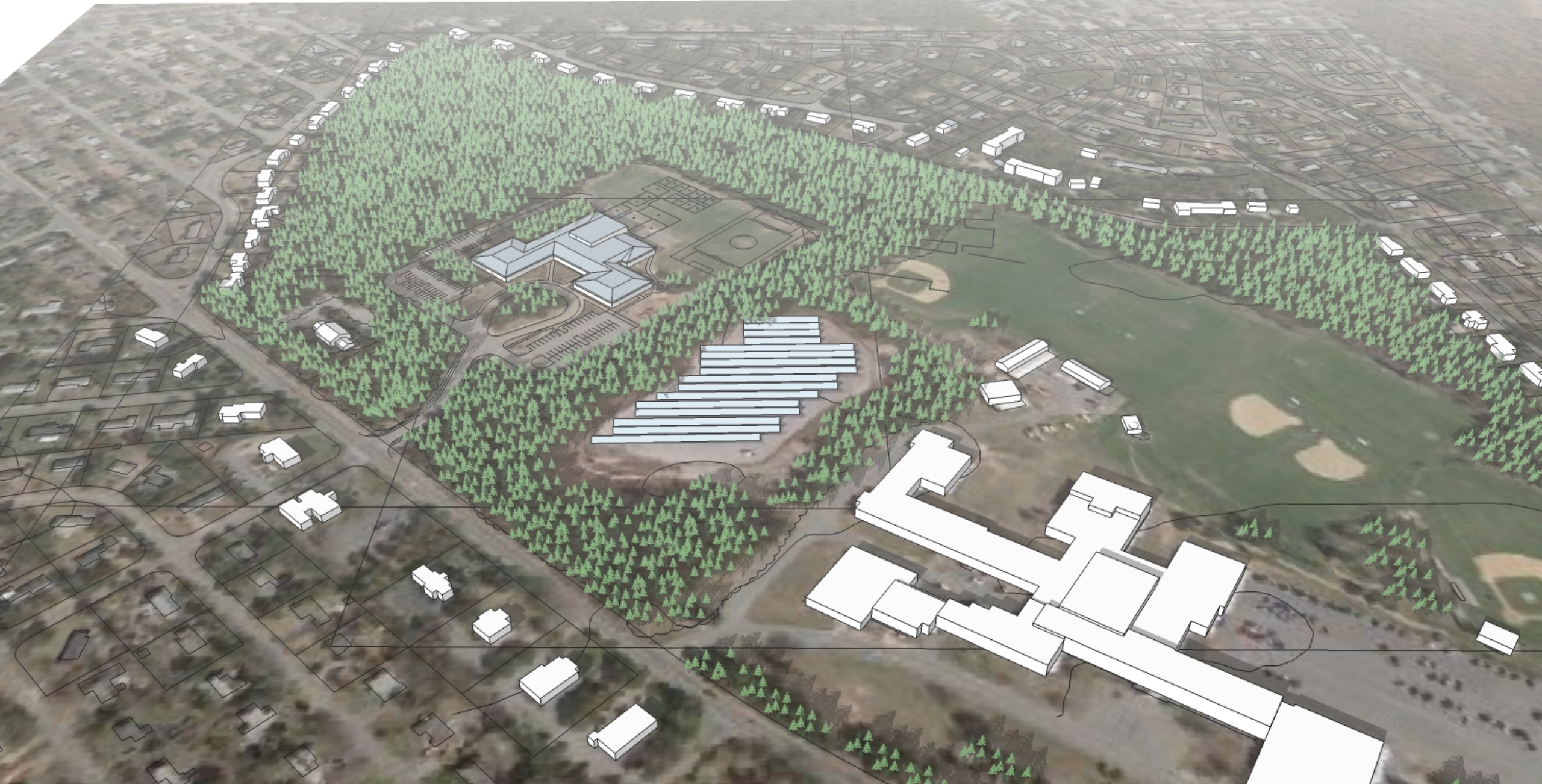
0 100 200 300 feet

1" = 100'





MASSING STUDIES – EXISTING



MASSING STUDIES – S2

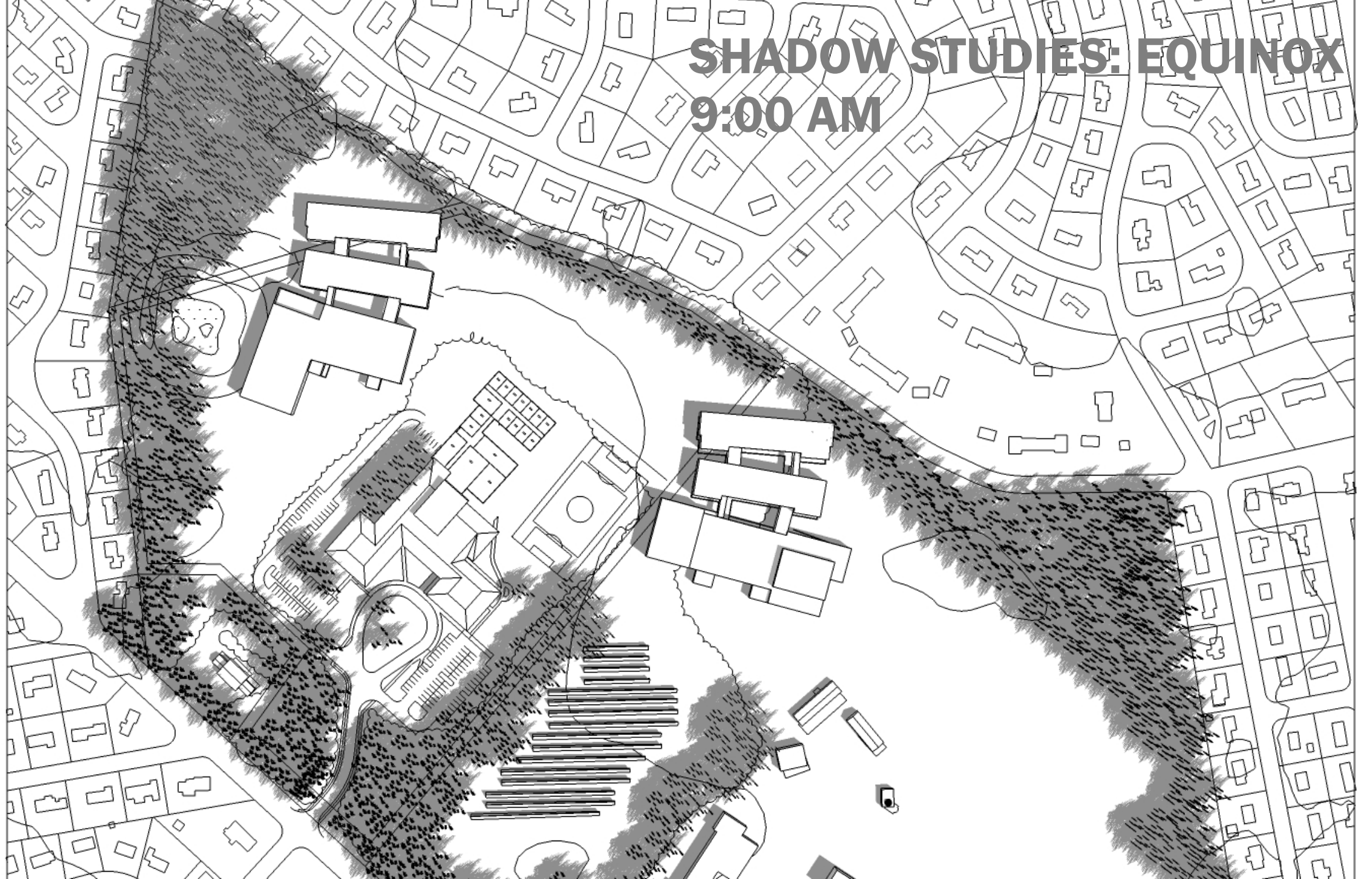


MASSING STUDIES – S4



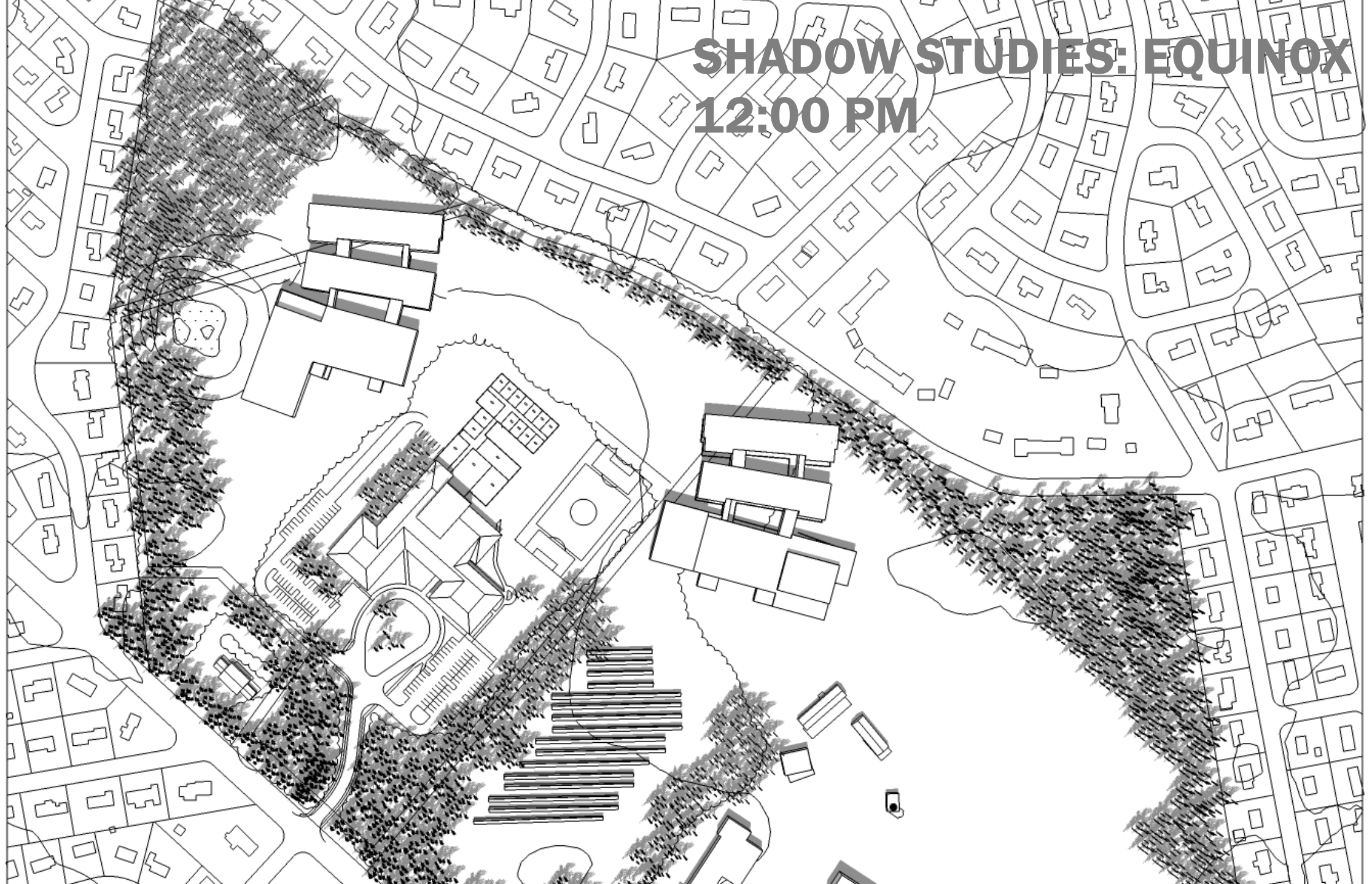
SHADOW STUDIES: EQUINOX

9:00 AM



SHADOW STUDIES: EQUINOX

12:00 PM



SHADOW STUDIES: EQUINOX

3:00 PM



SHADOWS: WINTER SOLSTICE

9:00 AM



SHADOWS: WINTER SOLSTICE

12:00 PM



SHADOWS: WINTER SOLSTICE

3:00 PM





**PERKINS —
EASTMAN**

Photo courtesy of TripAdvisor



DENNIS-YARMOUTH SCHOOL PROJECT

SCHOOL BUILDING COMMITTEE

February 15, 2018

