



**PERKINS —  
EASTMAN**

Photo courtesy of TripAdvisor



# **DENNIS-YARMOUTH SCHOOL PROJECT**

**THE DYIMS SCHOOL BUILDING  
COMMITTEE**

June 4, 2020



**PMA Consultants**



# AGENDA

## Meeting Minutes

### Overview of Meeting Agenda

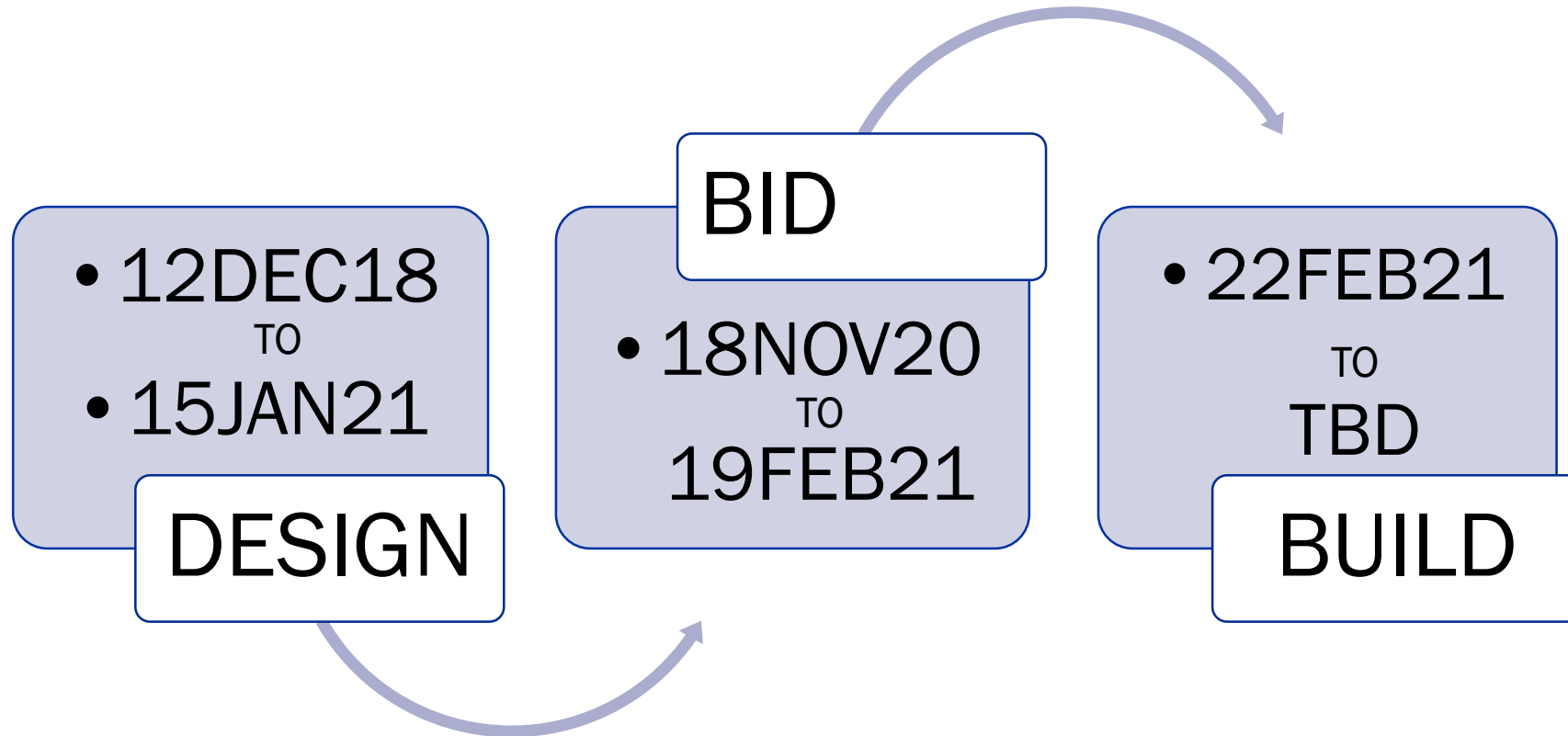
#### Old Business

- a) Master Project Schedule Update (PMA)
- b) Focus Group Updates
  - Landscape/Outdoor Fitness/Playgrounds/Courtyards (5/26)
  - DYIMS Athletic Fields (5/28)
  - Civil/Site (5/26)
  - Auditorium & Performing Arts (6/2)
  - MEP (6/3)
- c) 60% Construction Document Plan Updates
- d) Key Dates / Next Steps
  - 60% Construction Document Workplan
- e) Cashflow Update

#### New Business

Public Comment Period

# PROJECT SCHEDULE UPDATE



# PROJECT SCHEDULE UPDATE

DD

- Mar 30, 2020 – Estimate Set Due
- Apr 26, 2020 – Estimate Reconciliation Meeting
- Apr 30, 2020 – SBC VM Meeting and Vote to Submit
- May 07, 2020 – DD Submission to MSBA

60%

- Aug 18, 2020 – Estimate Set Due
- Sept 10, 2020 – Estimate Reconciliation Meeting
- Sept 17, 2020\* – SBC VM Meeting and Vote to Submit (\*tentative date to be confirmed)
- **Sept 22, 2020 – 60% Submission to MSBA**

90%

- Oct 20, 2020 – Estimate Set Due
- Nov 10, 2020 – Estimate Reconciliation Meeting
- Nov 19, 2020\* – SBC VM Meeting and Vote to Submit (\*tentative date to be confirmed)
- **Nov 24, 2020 – 90% Submission to MSBA**





# **FOCUS GROUP UPDATES**

## **Landscape/Outdoor Fitness/Playgrounds/ Courtyards (5/26)**

### **AGENDA**

- **Grades 4-5 Playground**
- **PE Fitness**
- **Play Surface Graphics/colors**
- **Mattacheese and Wixon Courtyards  
(update)**

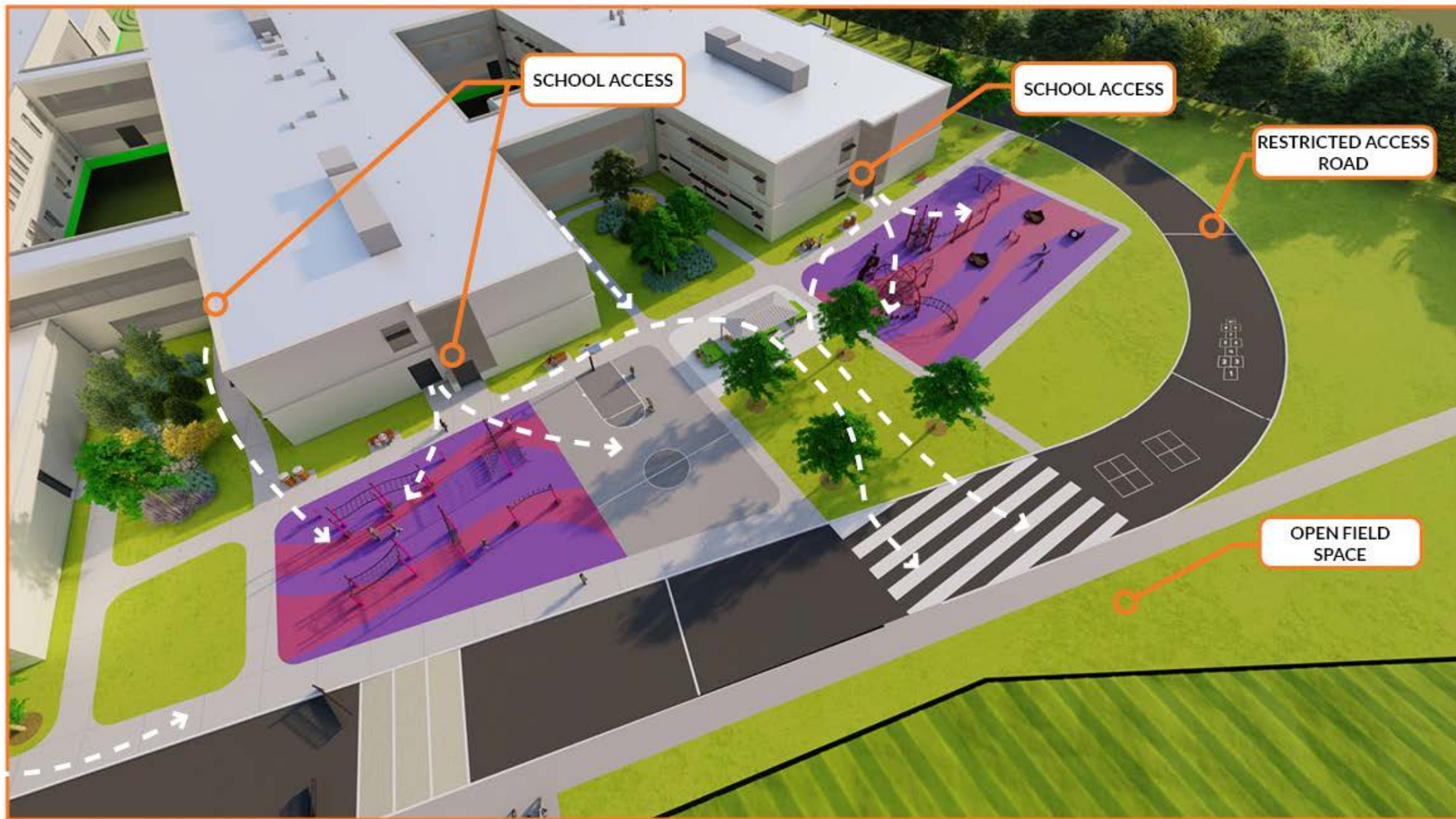
# DENNIS YARMOUTH INTERMEDIATE MIDDLE SCHOOL

## Playground Package





## STUDENT CIRCULATION







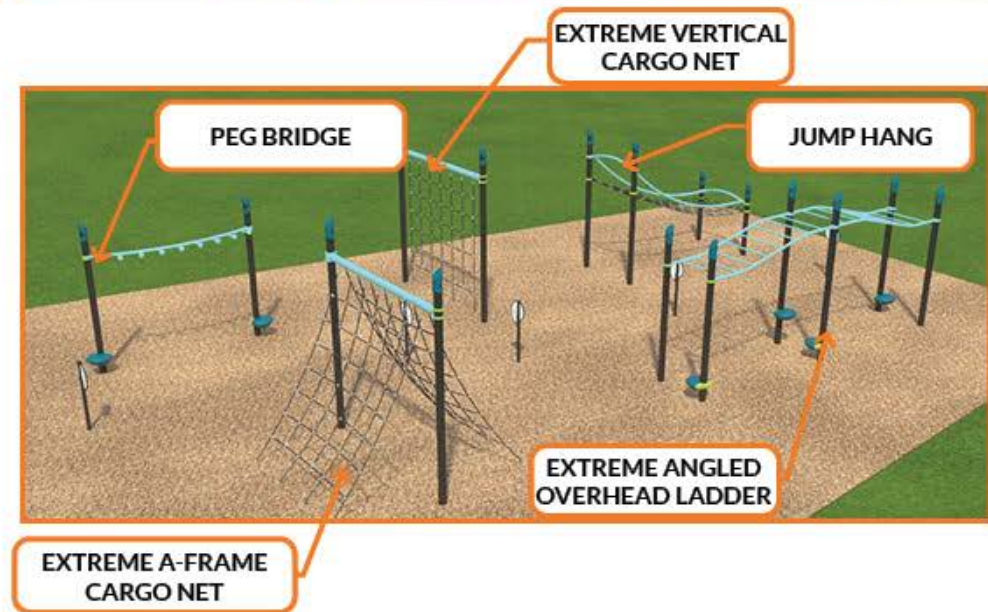
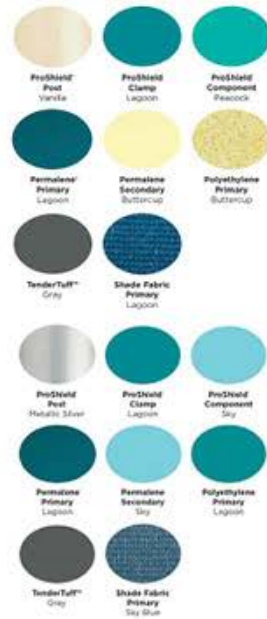
## FITNESS/PE AREA



Palette BS



Palette BU



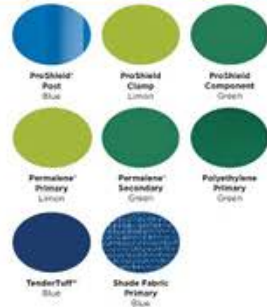




## 4TH-5TH GRADE PLAY AREA



Palette AZ



Palette AO



NETPLEX, GYRO TWISTER, SKY-PORT CLIMBER, LOLLILADDER, CLIMBING WALL, TIGHTROPE

POWERLIFTER

COLOR PANELS



BALANCE BEAM

STATIONARY CYCLER

OMNI SPINNER

SADDLE SPINNER

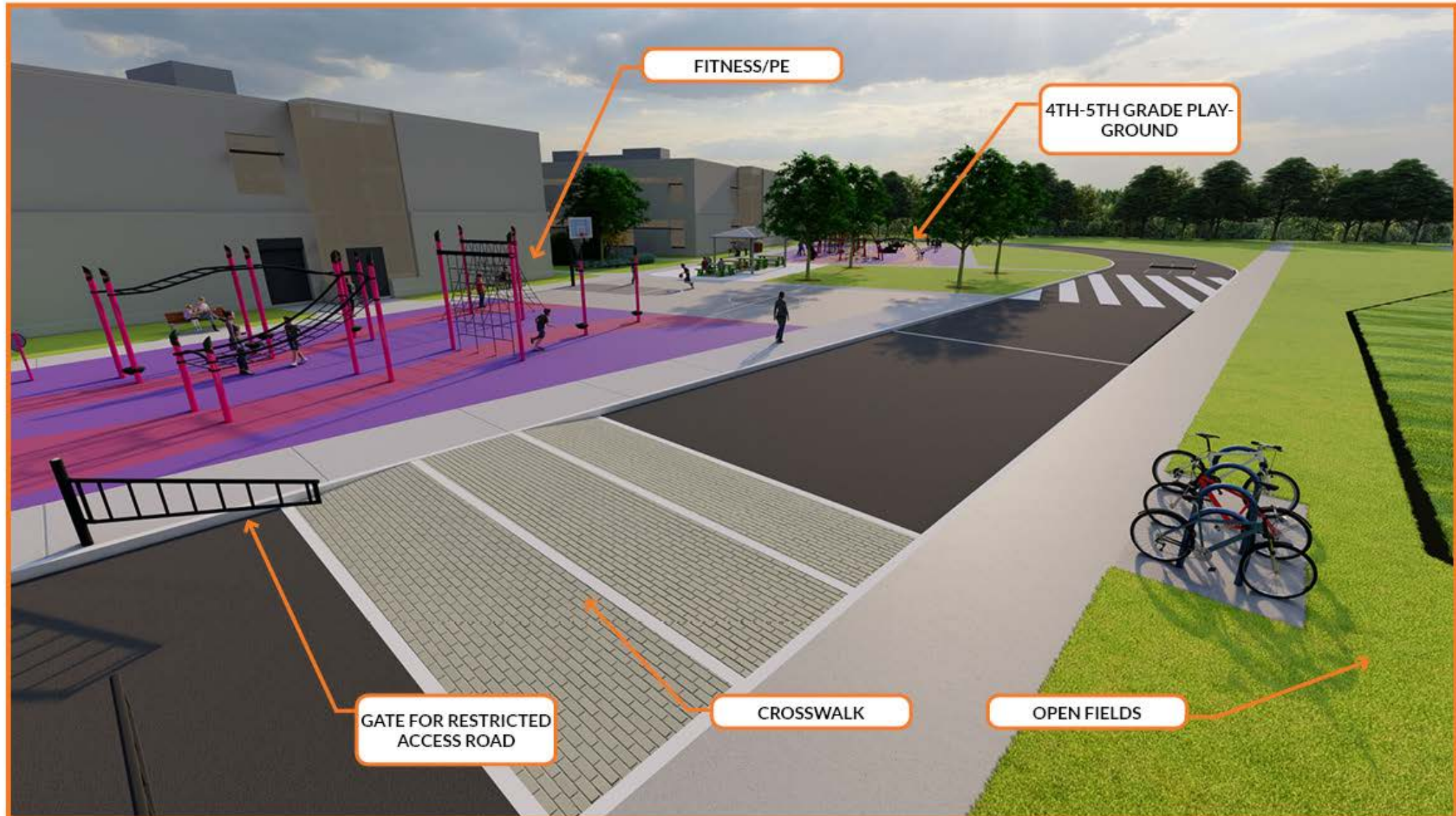
ECLIPSE RUSHWINDER, NET-PLUS, SWIGGLE STIX, CRESCENT CLIMBER, OVERHEAD TREKKER, RINGTANGLE

## HALF-BASKETBALL COURT





## VIEW FROM ACCESS ROAD





## PLAY SURFACE GRAPHIC/COLORS



WAVE DESIGN



WAVE DESIGN



OCEAN MARSH DESIGN



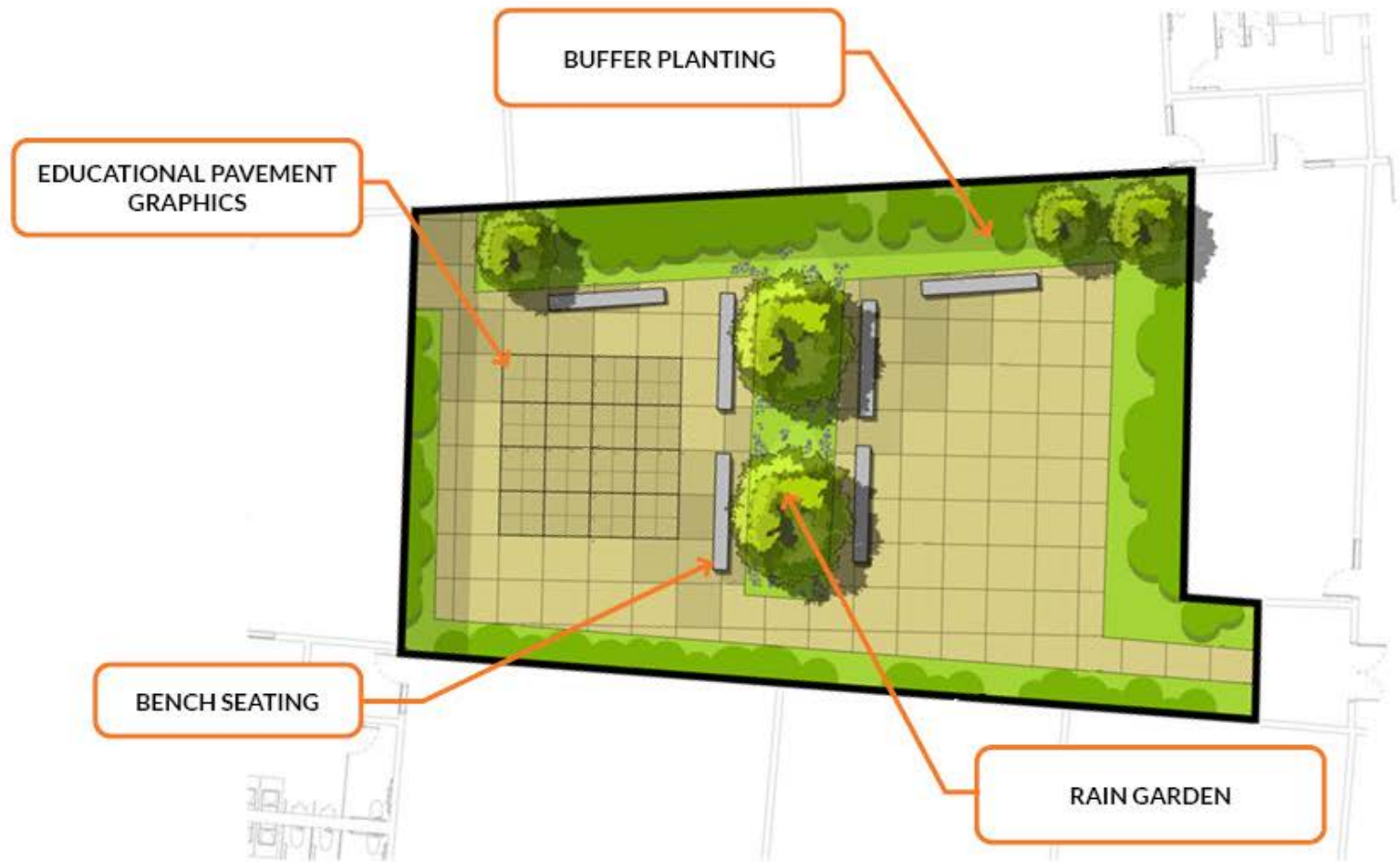
FITNESS COURSE



# LARGE COURTYARD



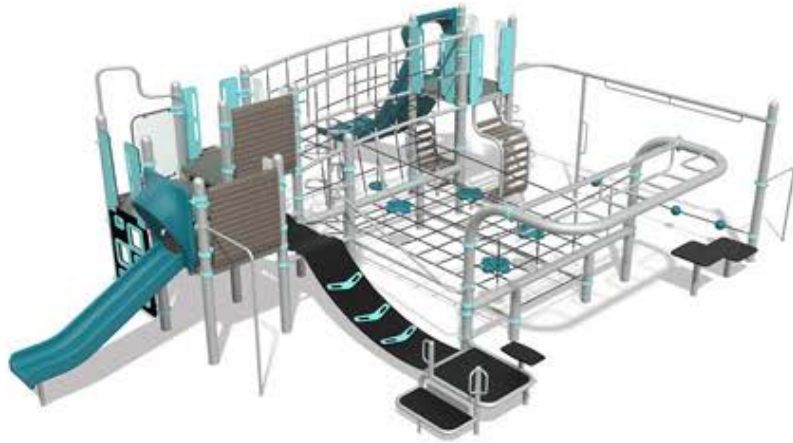
## SMALL COURTYARD



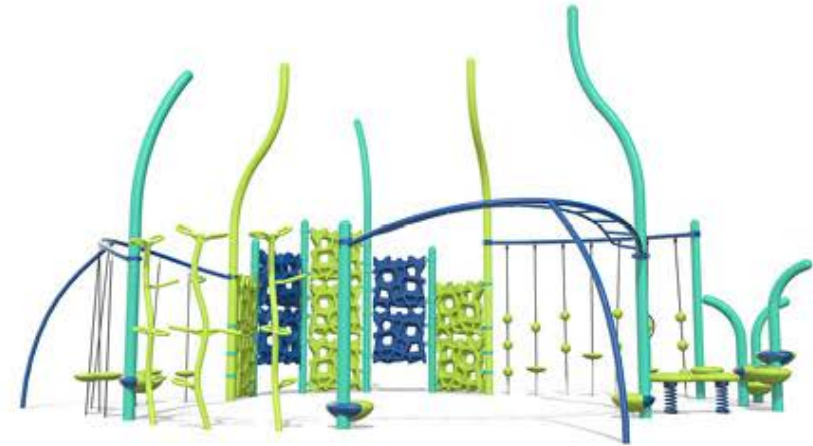


# ALTERNATIVES

## 4-5 PLAY EQUIPMENT ALTERNATIVES



## PE EQUIPMENT ALTERNATIVES





# **FOCUS GROUP UPDATES**

## **DYIMS Athletic Fields (5/28)**

### **AGENDA**

- **Background**
- **New options**
- **Pros/Cons**
- **Cost Comparisons**
- **Discussion and Direction**

# **ATHLETIC/PE/REC CONSIDERATIONS**

- 1. ENVIRONMENTAL AND WATER RESTRICTIONS**
- 2. PLAYER SAFETY AND SOLAR ORIENTATION**
- 3. GRADING, EARTHWORK, WALLS**
- 4. ALL OPTIONS PRESENTED INVOLVE COMPROMISE**
- 5. ORDER OF MAGNITUDE COSTS HEREIN DO NOT INCLUDE  
ADDITIONAL SITE CLEARING, MAJOR EARTHWORK AND WALLS AT  
THIS TIME**

# ATHLETIC/PE/REC OPTIONS

## OPTION A – CARRIED IN DD PACKAGE TO MSBA

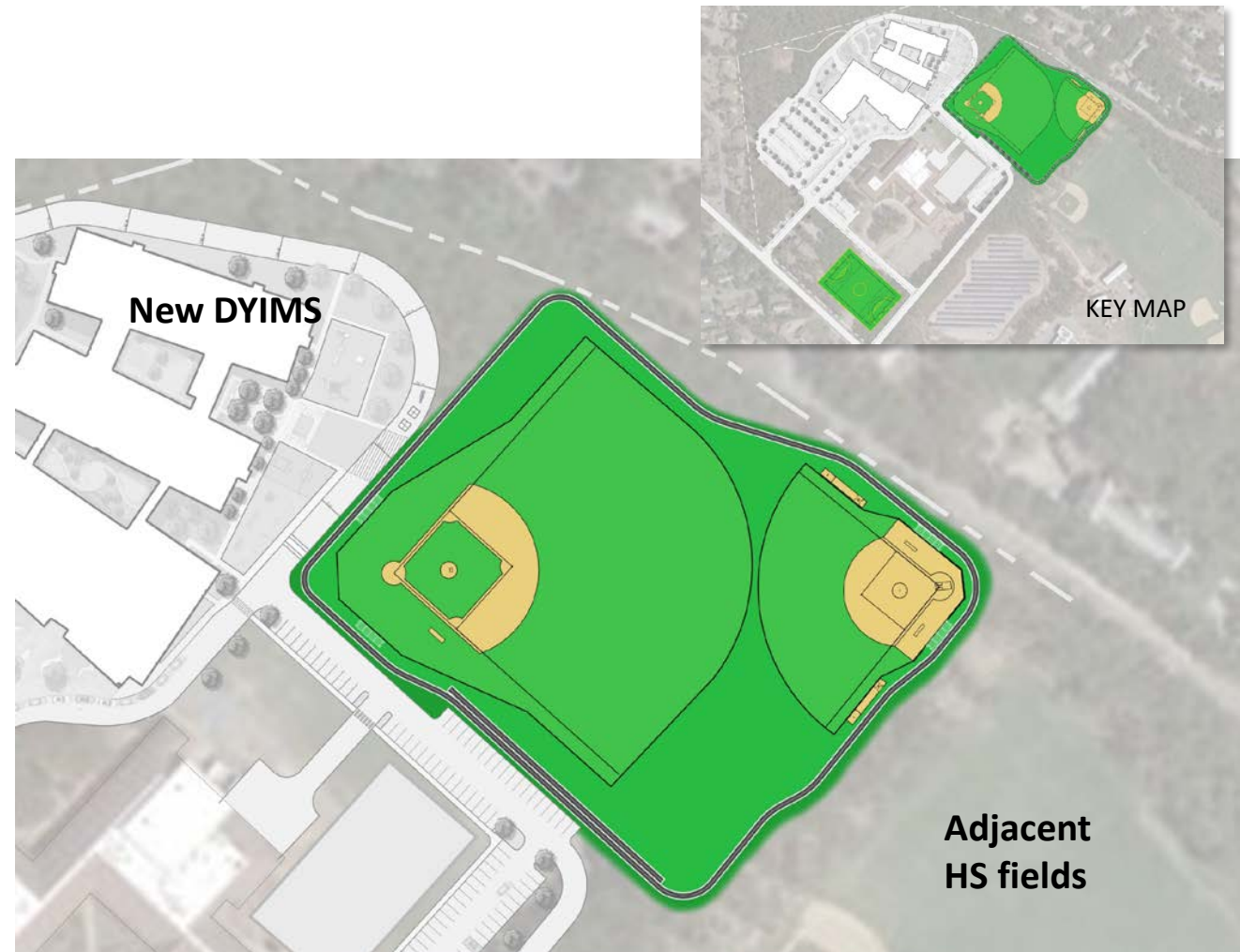
### Pros

- Natural grass ballfields + Station Avenue field, all irrigated

### Cons

- Few options for track practice
- Softball not optimal solar orientation
- Seeded Fields takes min. 3 growing seasons to establish

**Cost Order of Mag: \$1.8 Million**





# ATHLETIC/PE/REC OPTIONS

## OPTION B

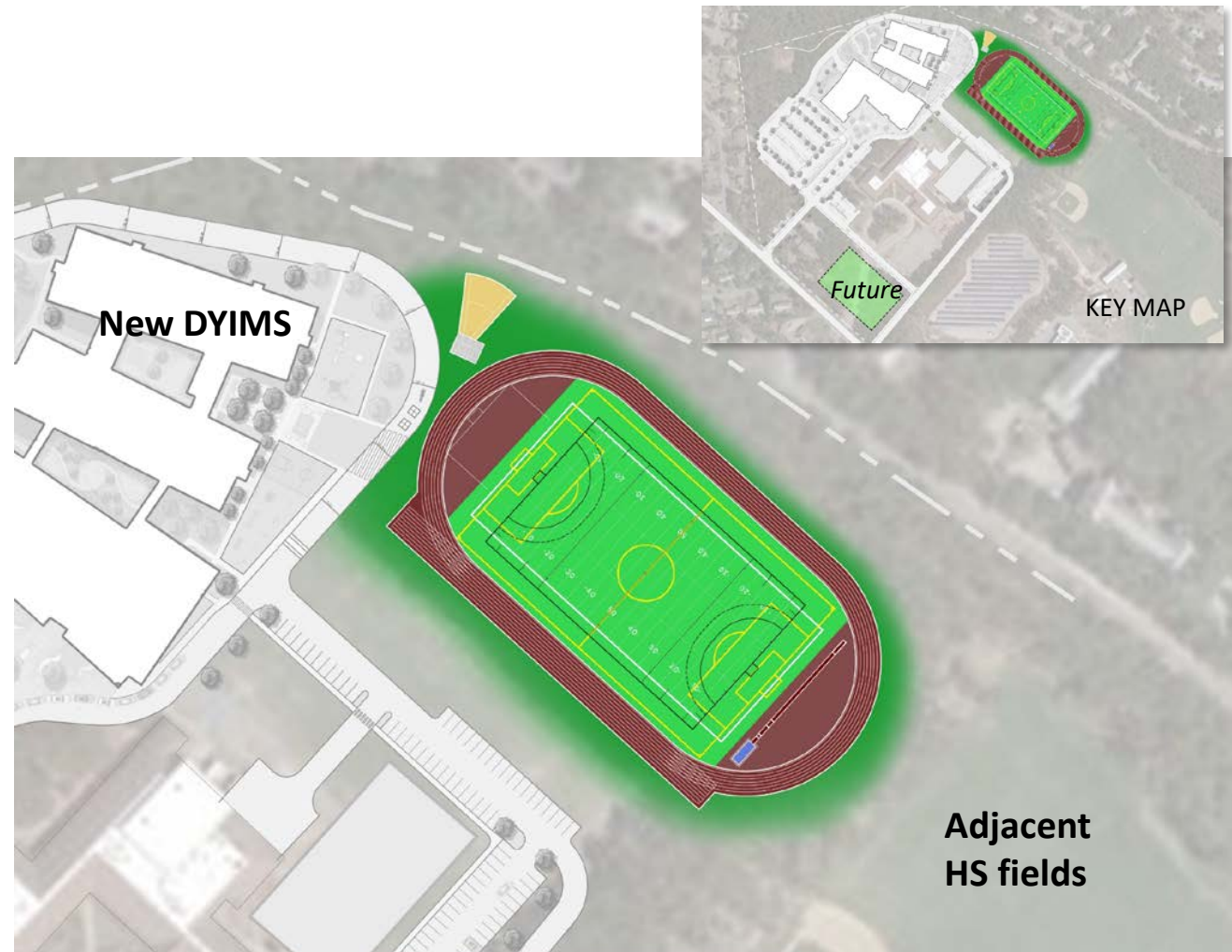
### Pros

- 400m regulation track
- Synthetic allows fully functional field use without irrigation
- Natural grass is an option, but would need Station Ave Field and both to be irrigated
- Shot put, long jump included

### Cons

- No baseball, softball, discus
- Solar orientation not ideal

**Cost Order of Mag: \$2.44 Million  
(assuming synthetic) no Station Ave  
Field**



# ATHLETIC/PE/REC OPTIONS

## OPTION C

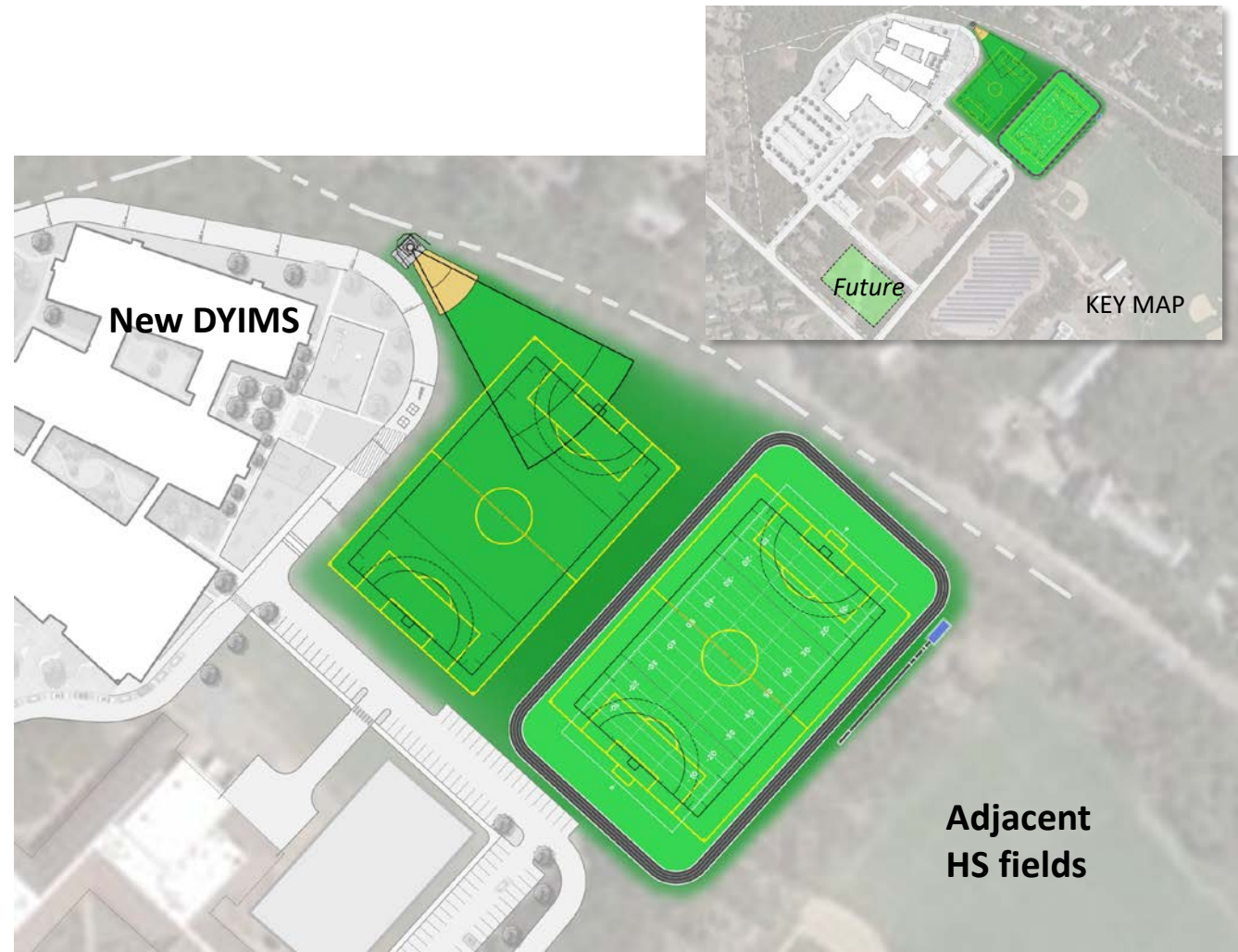
### Pros

- 4-lane, 400m non-regulation training track, long enough for 100m dash or 110m hurdles
- Shot put, long jump, discus included
- One synthetic field for heavy use
- One irrigated grass field for PE/REC/practice and recess use
- Station Ave Field could be developed in the future

### Cons

- No baseball, softball
- Non regulation track

**Cost Order of Mag: \$2.62 Million**





# ATHLETIC/PE/REC OPTIONS

## OPTION D

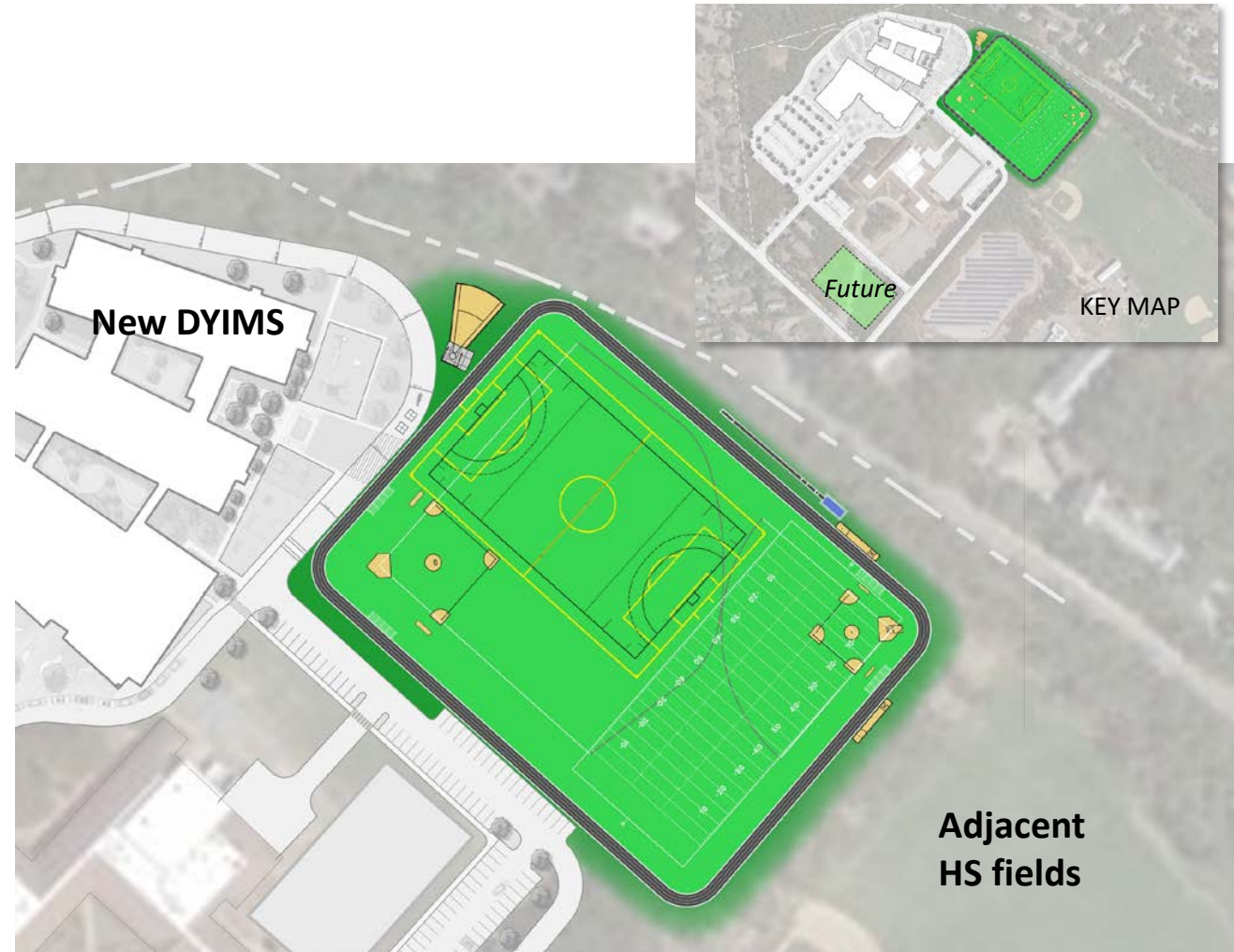
### Pros

- Synthetic, non-irrigated facility
- Station Ave Field could be developed in the future
- Softball, baseball, multi-use field, long jump, shot put included

### Cons

- No discus
- Softball solar orientation not optimal
- possible need for retaining wall with larger site
- Train track is not to any standard distance

**Order of Mag: \$3.78 Million**



# ATHLETIC/PE/REC OPTIONS

## OPTION E

### Pros

- 4-lane, 400m non-regulation training track with a straight away for 100m dash or 110 m hurdles
- Synthetic, non-irrigated facility
- Station Ave Field could be developed in the future
- Baseball with overlapping softball
- Discus, shotput and long jump included
- Smallest footprint

### Cons

- Overlapping fields - scheduling conflicts
- Field not long enough for football

**Order of Mag: \$2.4 Million**





# ATHLETIC/PE/REC SUMMARY

**OPTION A**

**\$1.8 M**



Grass Facility with Station Ave Field

**OPTION B**

**\$2.44 M**



Synthetic Facility w/ grass option-no Station Ave Field

**OPTION C**

**\$2.62 M**



Synthetic and Grass Facility-no Station Ave Field

**OPTION D**

**\$3.78 M**



Synthetic Facility-no Station Ave Field

**OPTION E**

**\$2.4 M**



Synthetic Facility-no Station Ave Field



# **FOCUS GROUP UPDATES**

**Civil/Site (5/26)**

## **AGENDA**

- **Loading Dock Area Design**
- **Site Security**
- **Storm water Management**
- **Sustainability (LEED)**

[illegible]

SYMBOL	DESCRIPTION	QTY
	INFILL MIX	30.00 SF
	SAND	200.00 SF
	DESCRIPTION	QTY
	4\"/>	4.00 SF
	6\"/>	1.00 SF
	DOUBLE LAYER ACCESS GATE	QTY
	DESCRIPTION	QTY
	SHELLS IN CONCRETE	4.00 SF
	PAVING SURFACING	9.00 SF
	COURT PAVING	0.00 SF
	STABILIZED INFILL (SUB)	1.00 SF
	GRANITE LANDSCAPE DUMP	1.00 SF
	DUMP PAVING TYPE A	1.00 SF
	DESCRIPTION	QTY
	FLAG POLE	1

[illegible]
**TRAVERSE**  
 TENDERS & PROJECTS  
 1000 Highway 100, Suite 100  
 Burlington, ON L7R 4K1  
 (905) 335-1100

**PERKINS—**  
**EASTMAN**

**JENNIFER VANDERKAM**, THE NATIONAL DEFENSE DISTRICT  
200 Graham Avenue  
South Yarmouth, NS, B5A 1C6

**David's Power Museum**  
PWA Campus Party  
Millennium 1200 Hwy East, Suite 300  
Burlington, NH 05405

**COMP CONSULTANTS, INC.**  
20000 Highway 100  
Suite 100  
Houston, TX 77058  
713/465-1100

**TRANSIENT LANDSCAPE**  
via Thomas Street, San Francisco

**SHAW & CO.**

**Technical Details**  
PARTS: 1000000, 5-000000, 000

Business/Res. Products

**Charles C. Corns, PhD**

**THEATER SEASON**  
40 Park Street, Suite C2  
Cambridge, MA 02138

**CHRISTINE MCGRATH ASSOCIATES**  
100 West 34th Street  
New York, NY 10018

POINT LINE SPACE  
75 Lowell Street  
Cambridge, MA 02142

**BU KENNEY ASSOCIATES**  
72 Westmore Street  
P.O. Box 100  
Newbury, MA 02459

**DATA SOURCES**  
**U.S. BUREAU OF ECONOMIC ANALYSIS**  
 U.S. Trade Survey Data, 2012

**Journal of Corporate Finance**  
**CORPORATE FINANCE**  
 VOLUME 15 NUMBER 4 WINTER 2003

THOMAS NOMA SETTI

**Executive Consultant**  
615.944.4444 or 615.944.4444

© 2004 Blackwell Publishing Ltd, *Journal of Internal Medicine* 255: 105–112

**DENNIS-YARMOUTH**

INTERMEDIATE /  
MIDDLE SCHOOL

296 Station Avenue  
South Yarmouth, MA 02664

PROJECT No. T1234

2019年12月

OVERALL SITE  
PLAN

\_\_\_\_\_

**L1.0**

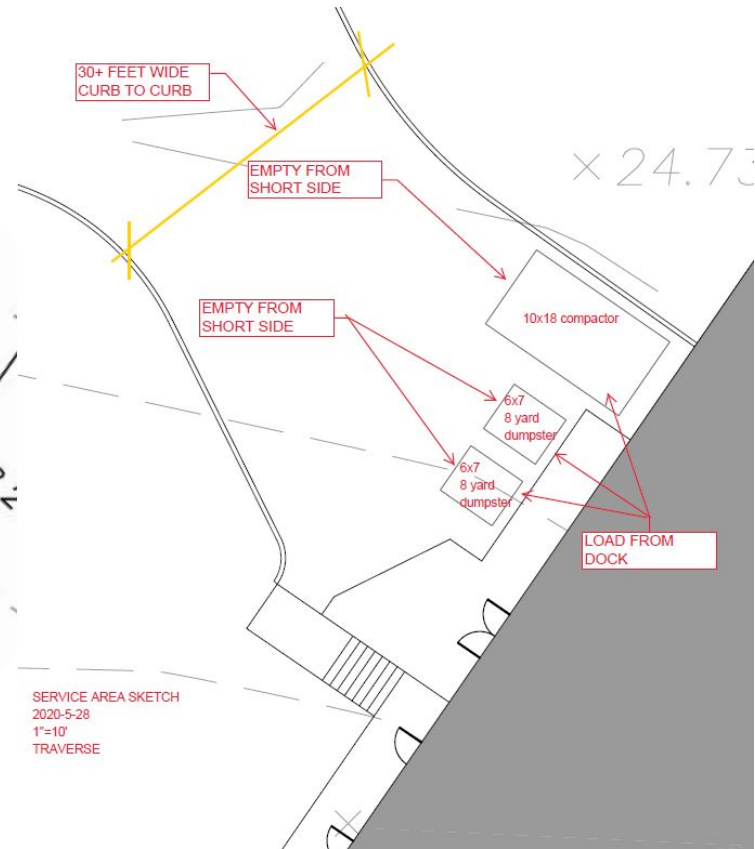
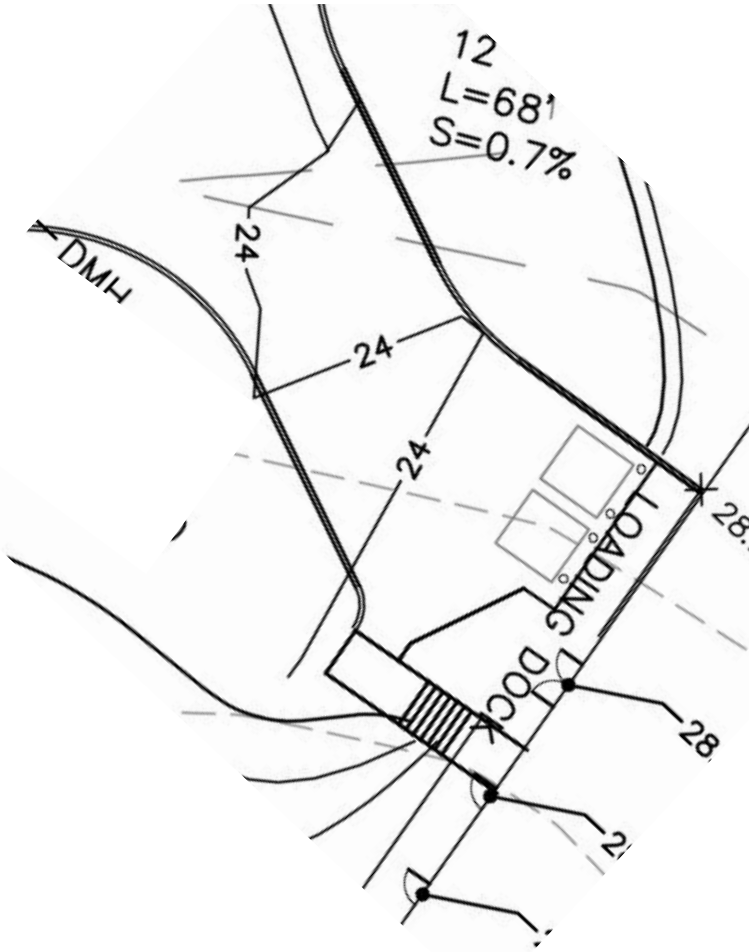
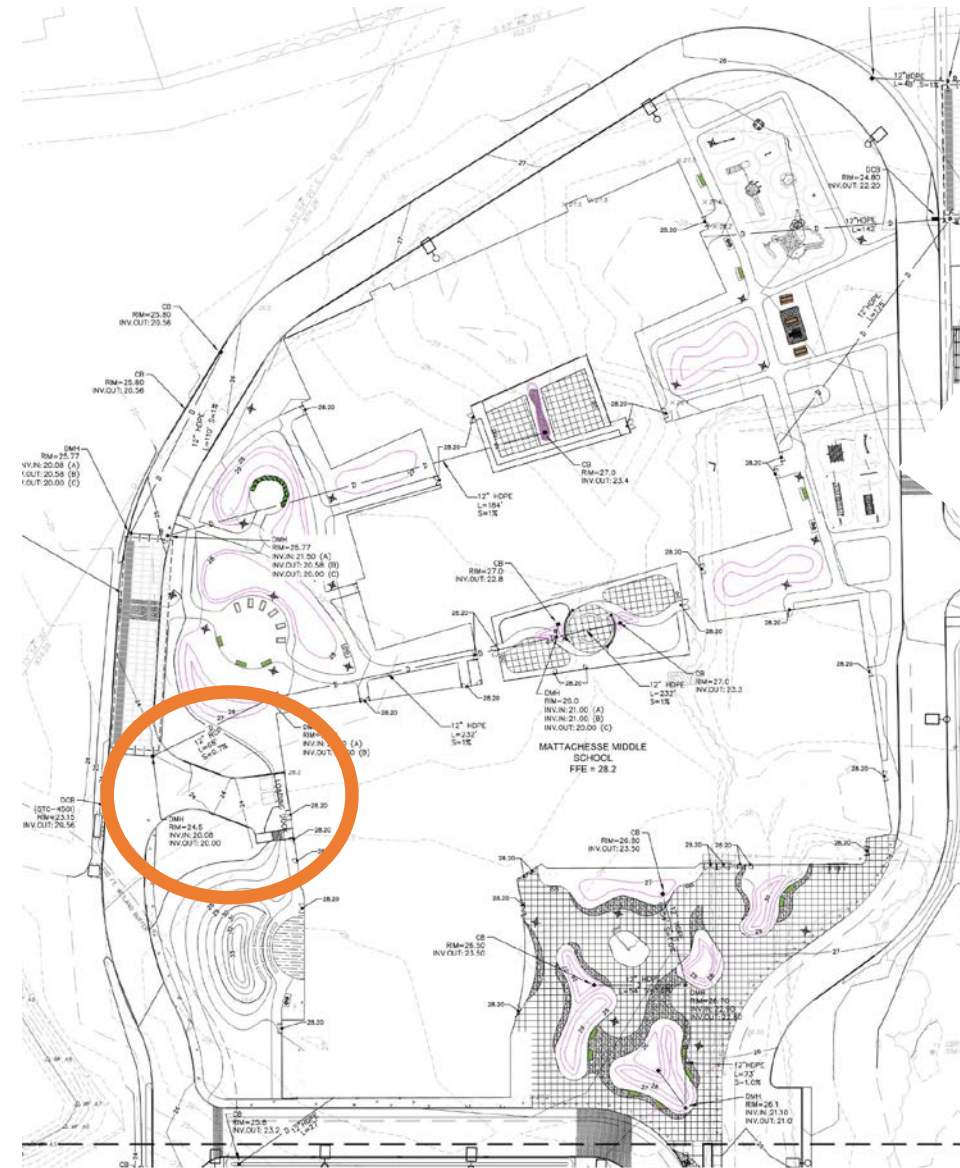
MAY 5, 2020



TRAVERSE  
landscape architects



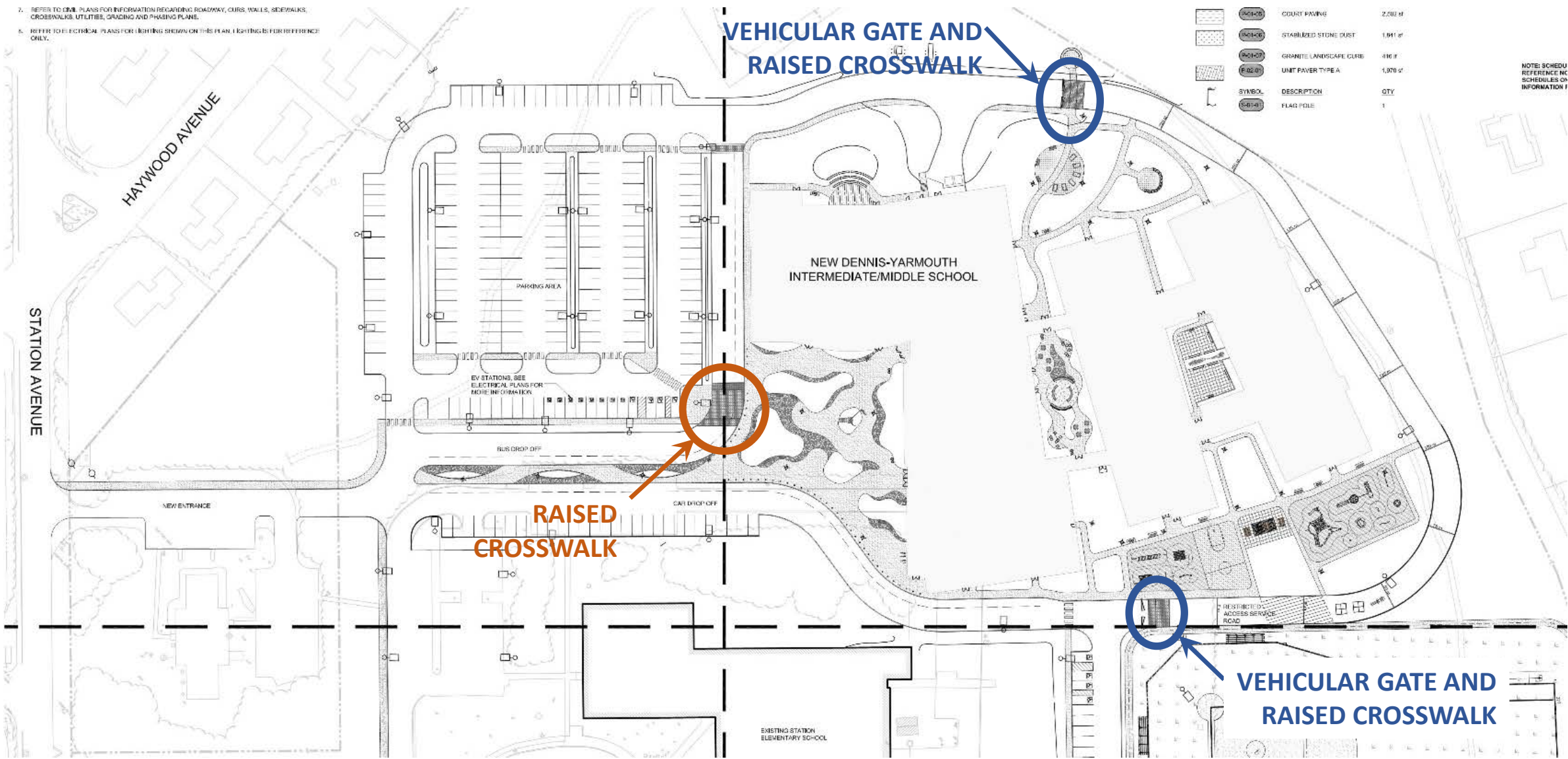
# LOADING DOCK DESIGN



D.D. PHASE PLAN (05 05 20)

NEW PLAN (05 26 20)

# SITE SECURITY





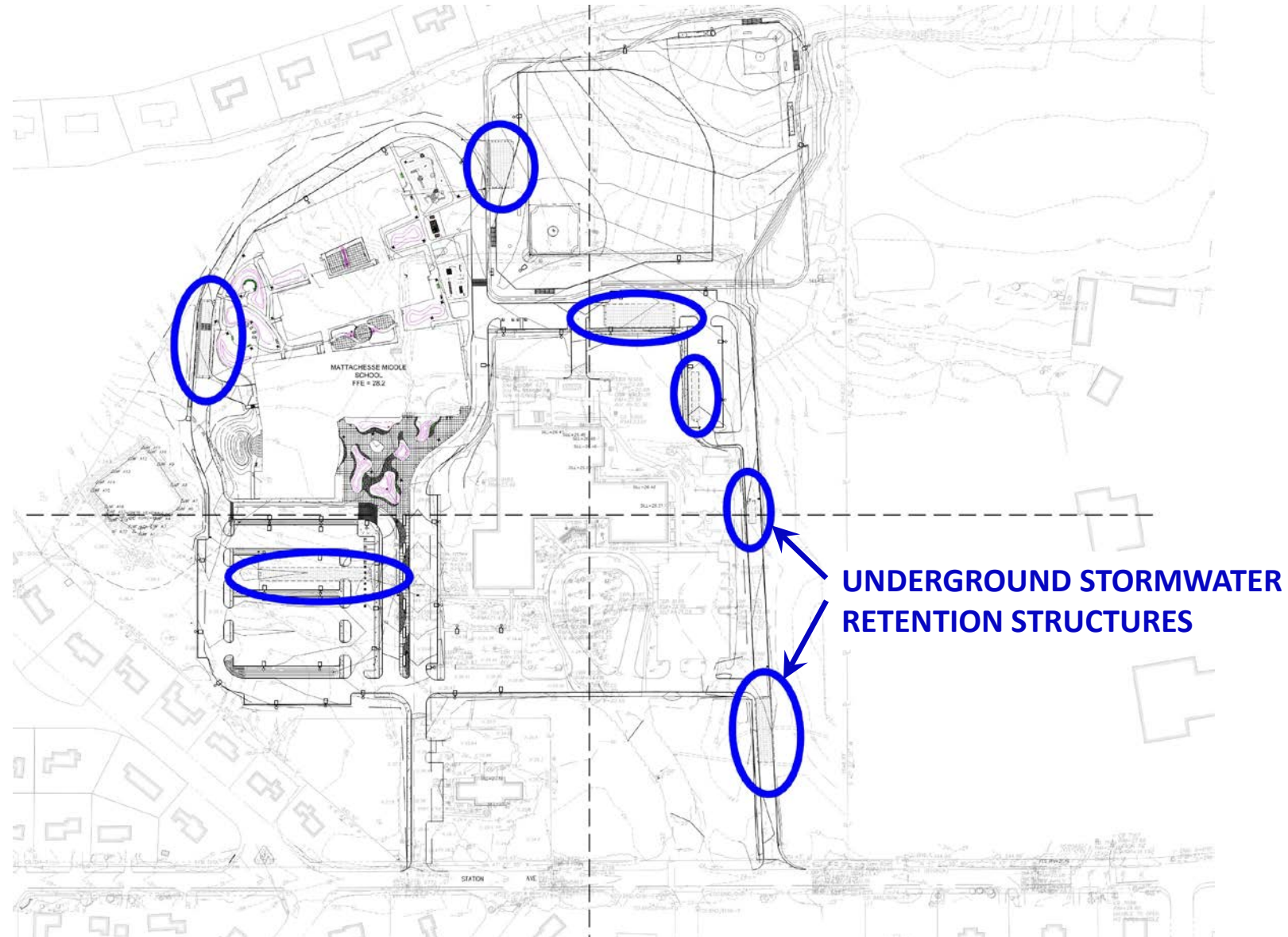
# SITE SECURITY (ENTRY PLAZA)



KEY PLAN



# STORMWATER MANAGEMENT

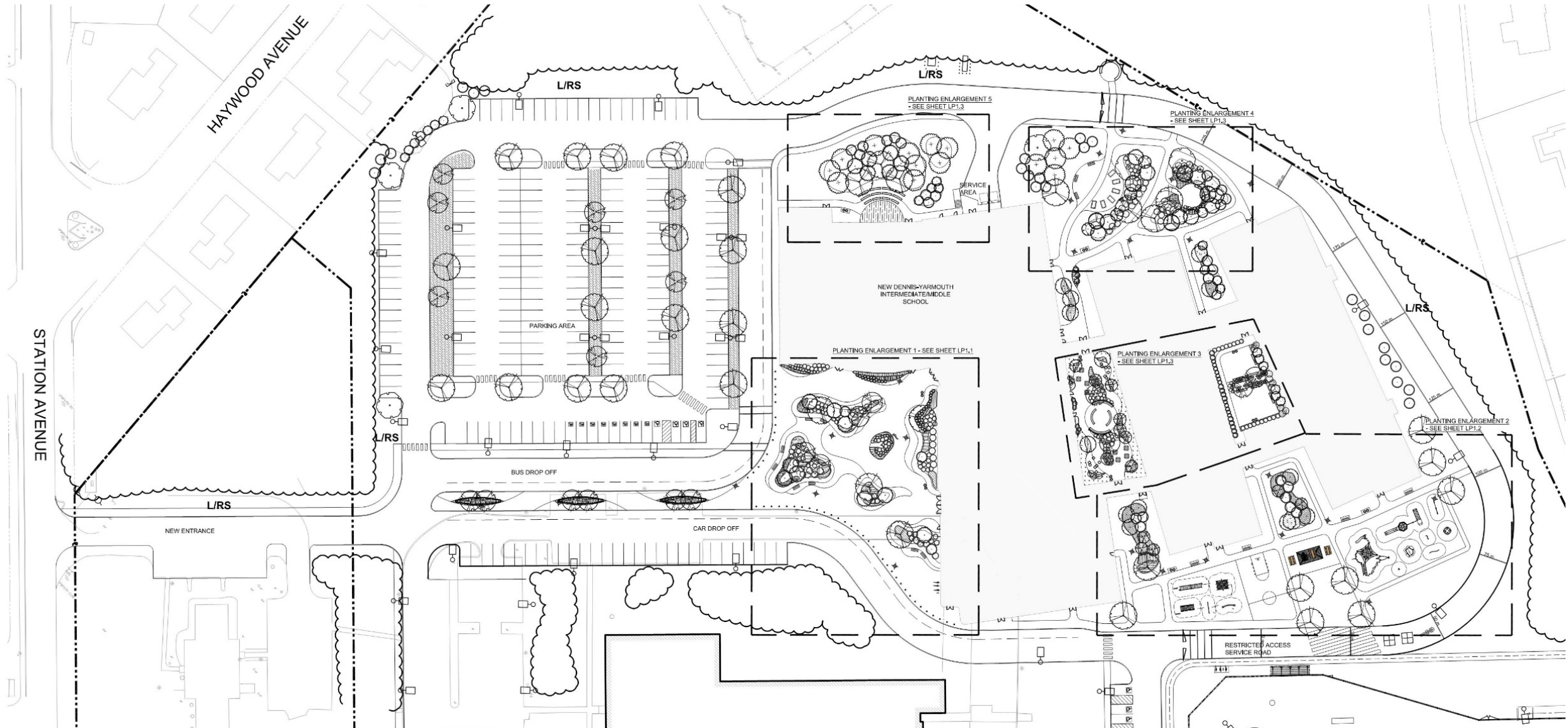








# PLANTING







# **FOCUS GROUP UPDATES**

## **Auditorium/Performing Arts (6/2)**

### **AGENDA**

- **Overview**
- **Auditorium Design Focus**
- **Auditorium Lobby**
- **Cafetorium**



# OVERVIEW - UPDATED PLANS



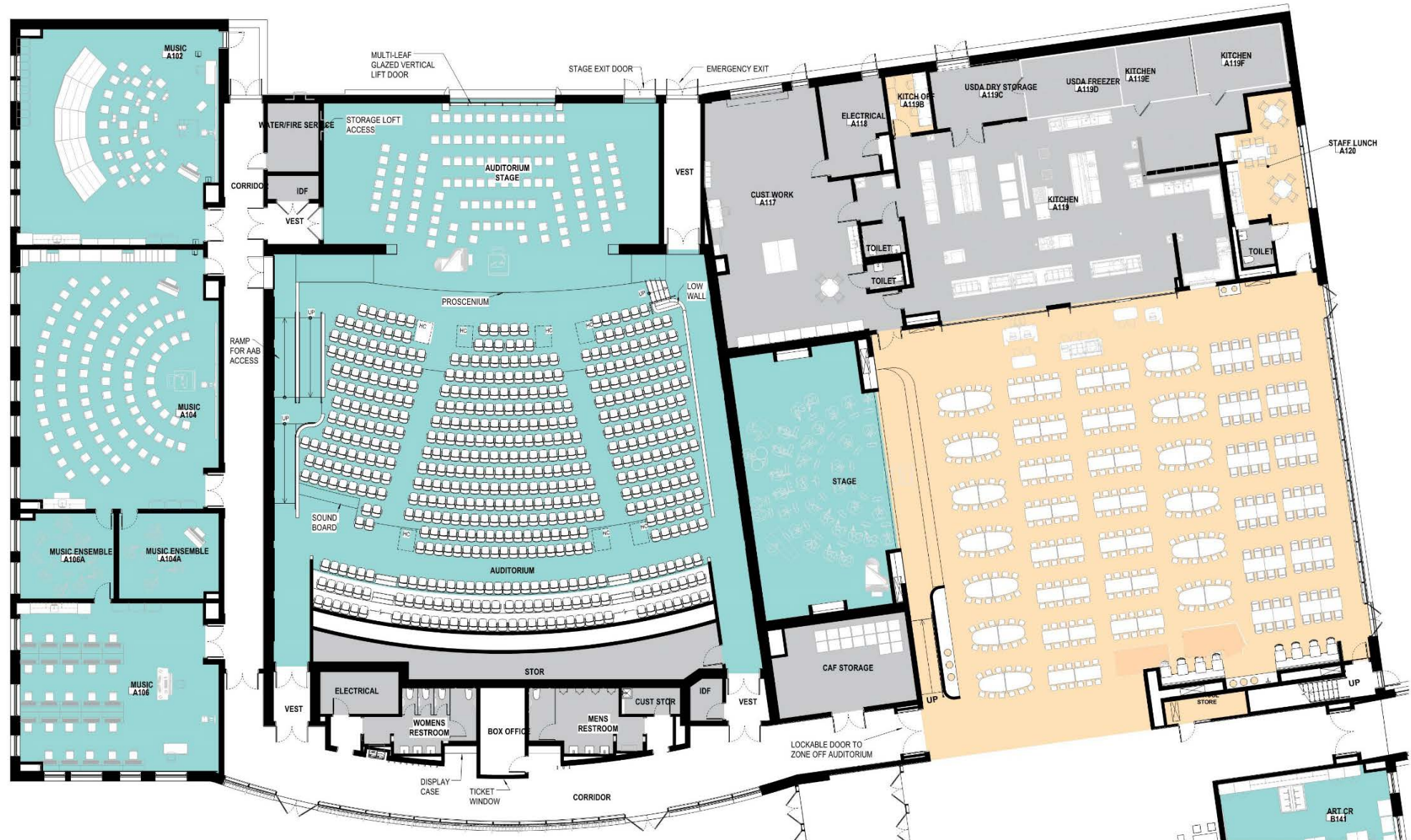
**LEVEL 1 OVERALL PLAN**



**LEVEL 2 OVERALL PLAN**

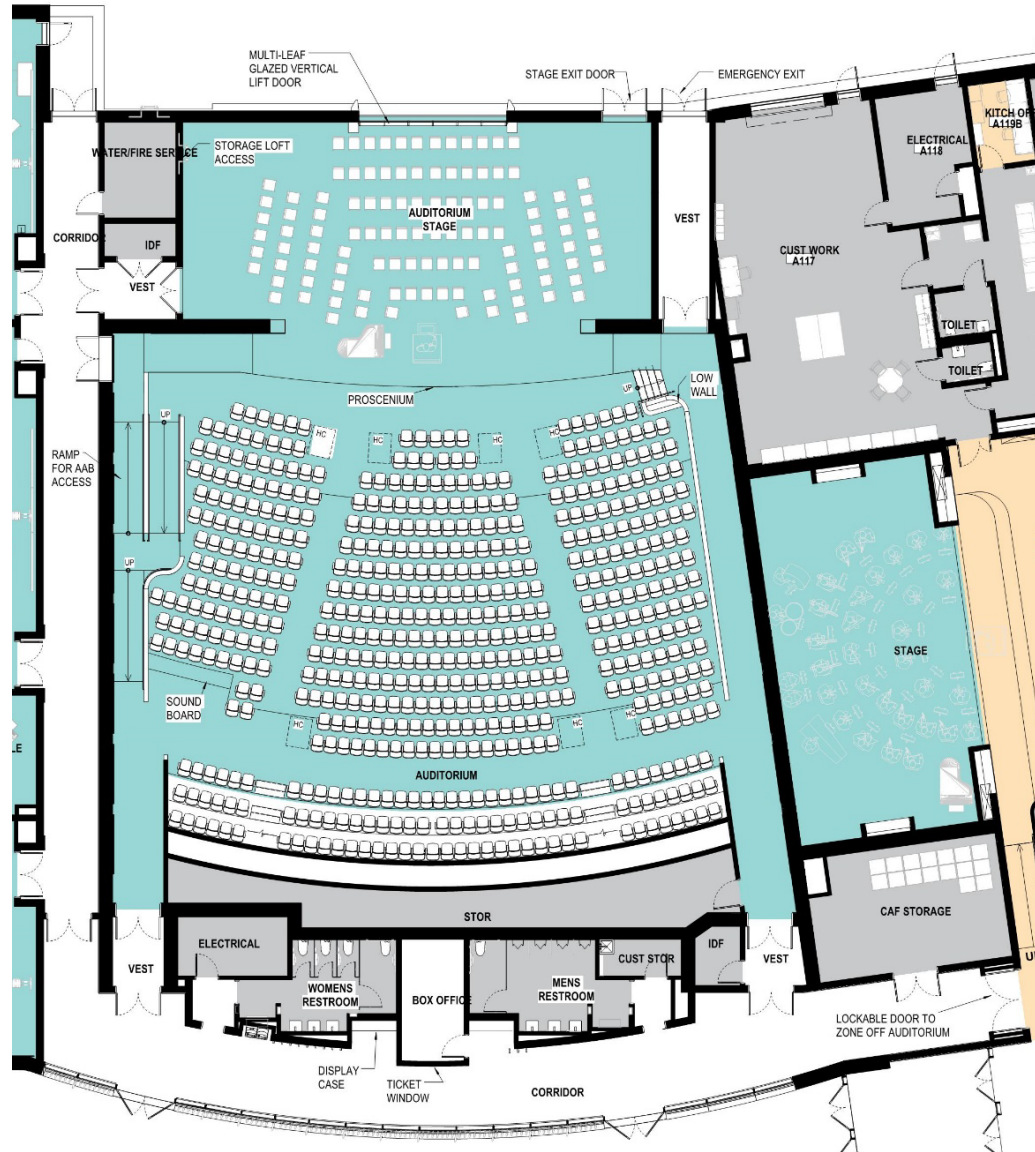


# AUDITORIUM / CAFETORIUM

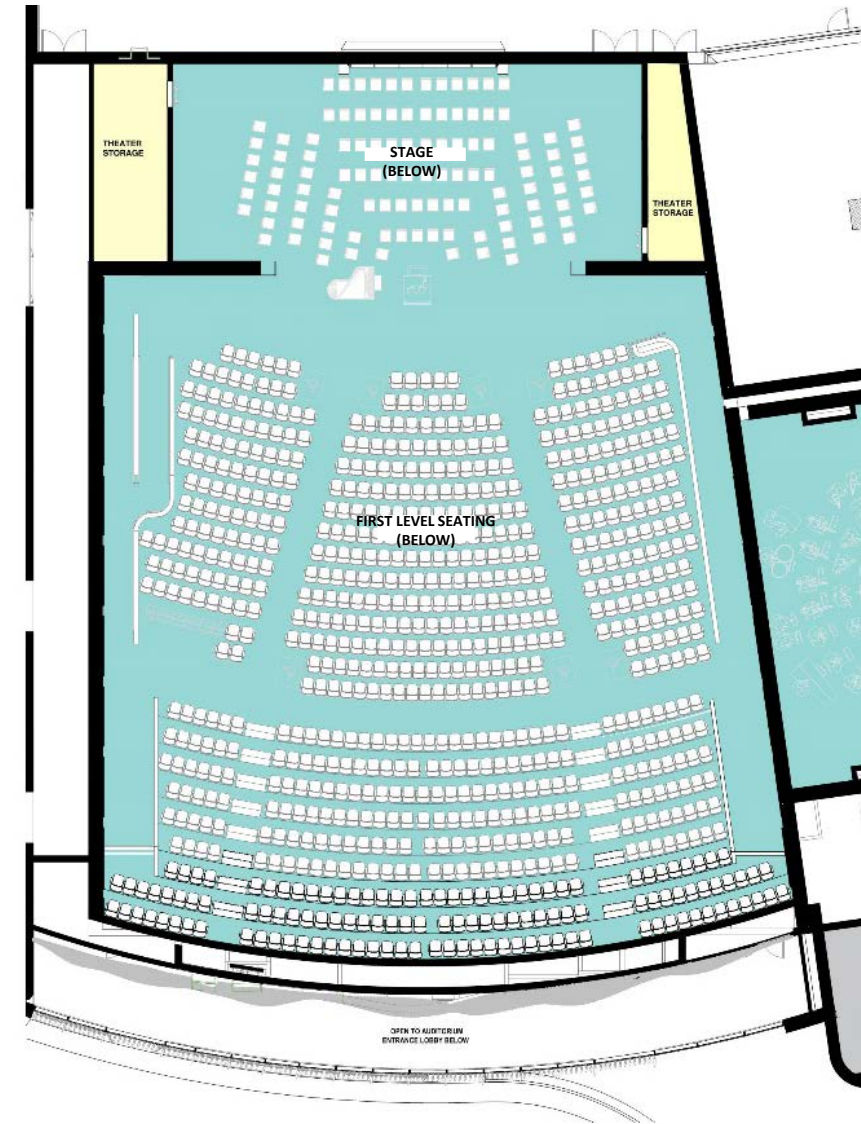




# AUDITORIUM PLANS



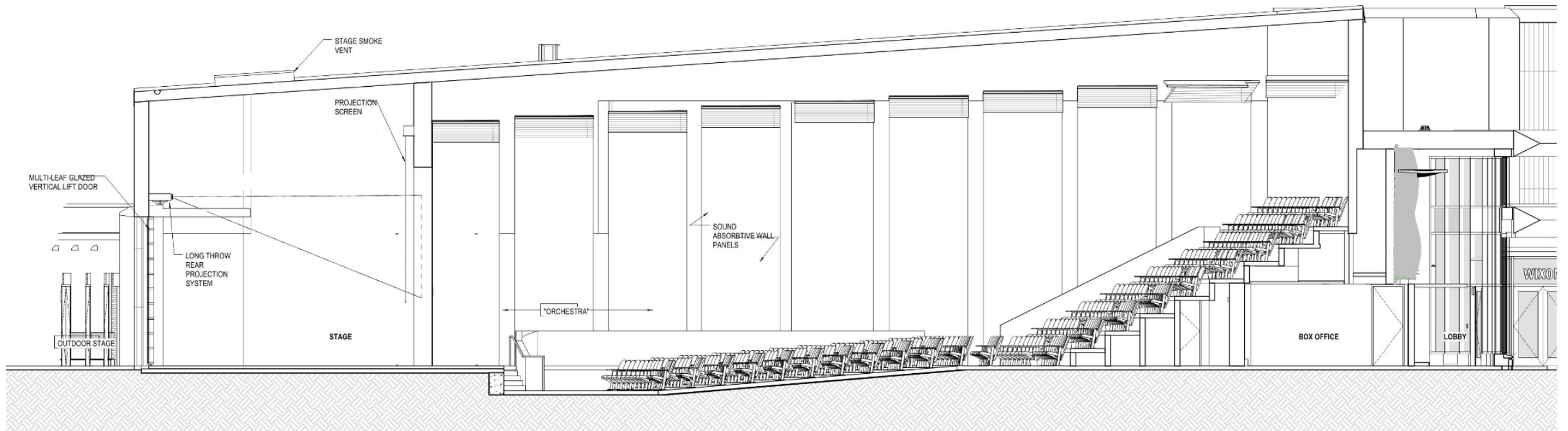
**AUDITORIUM LEVEL 1 PLAN**



**AUDITORIUM LEVEL 2 PLAN**



# AUDITORIUM SECTION

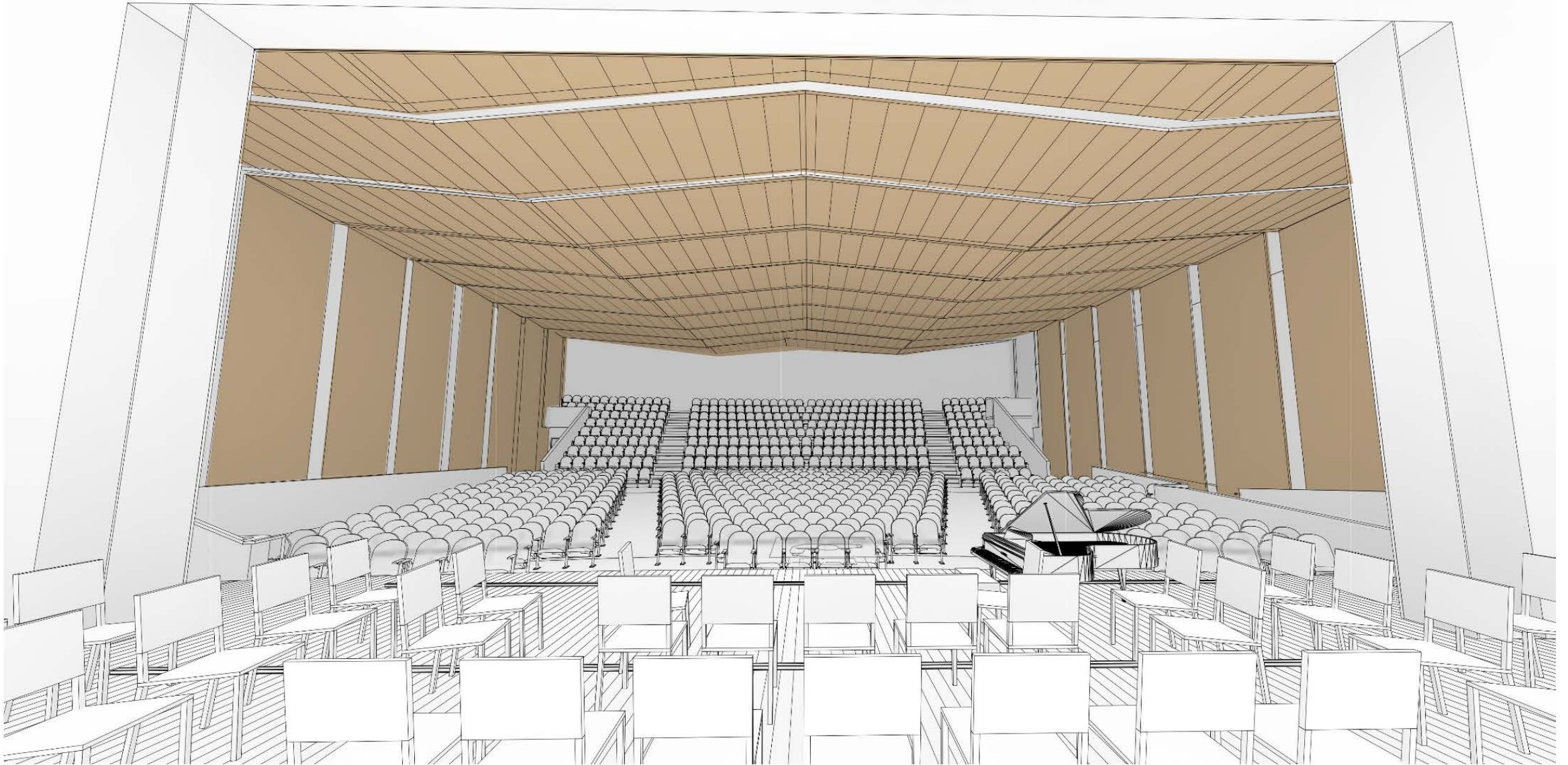


**AUDITORIUM SECTION**





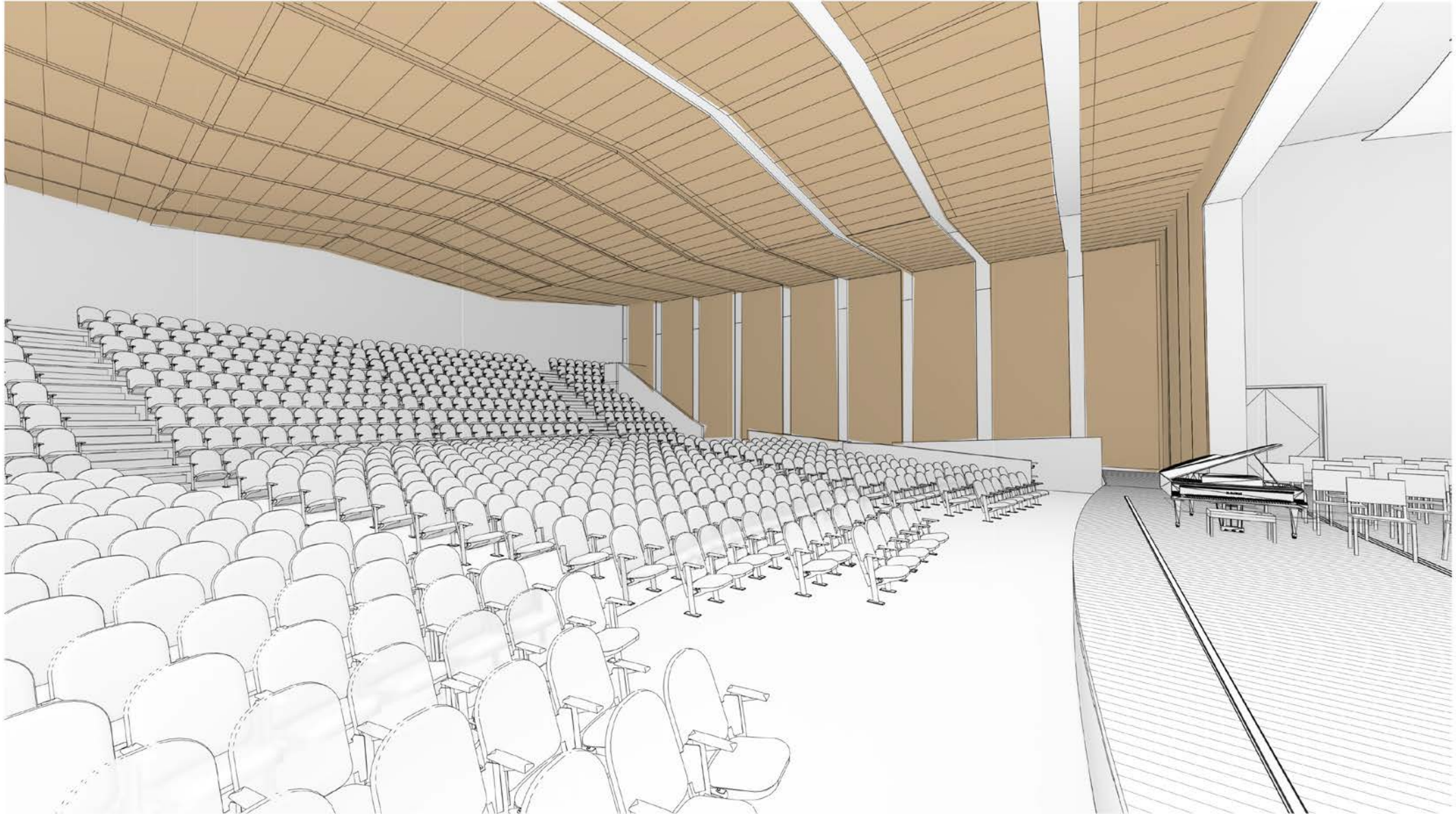
# VIEW FROM STAGE



**VIEW FROM THE STAGE**



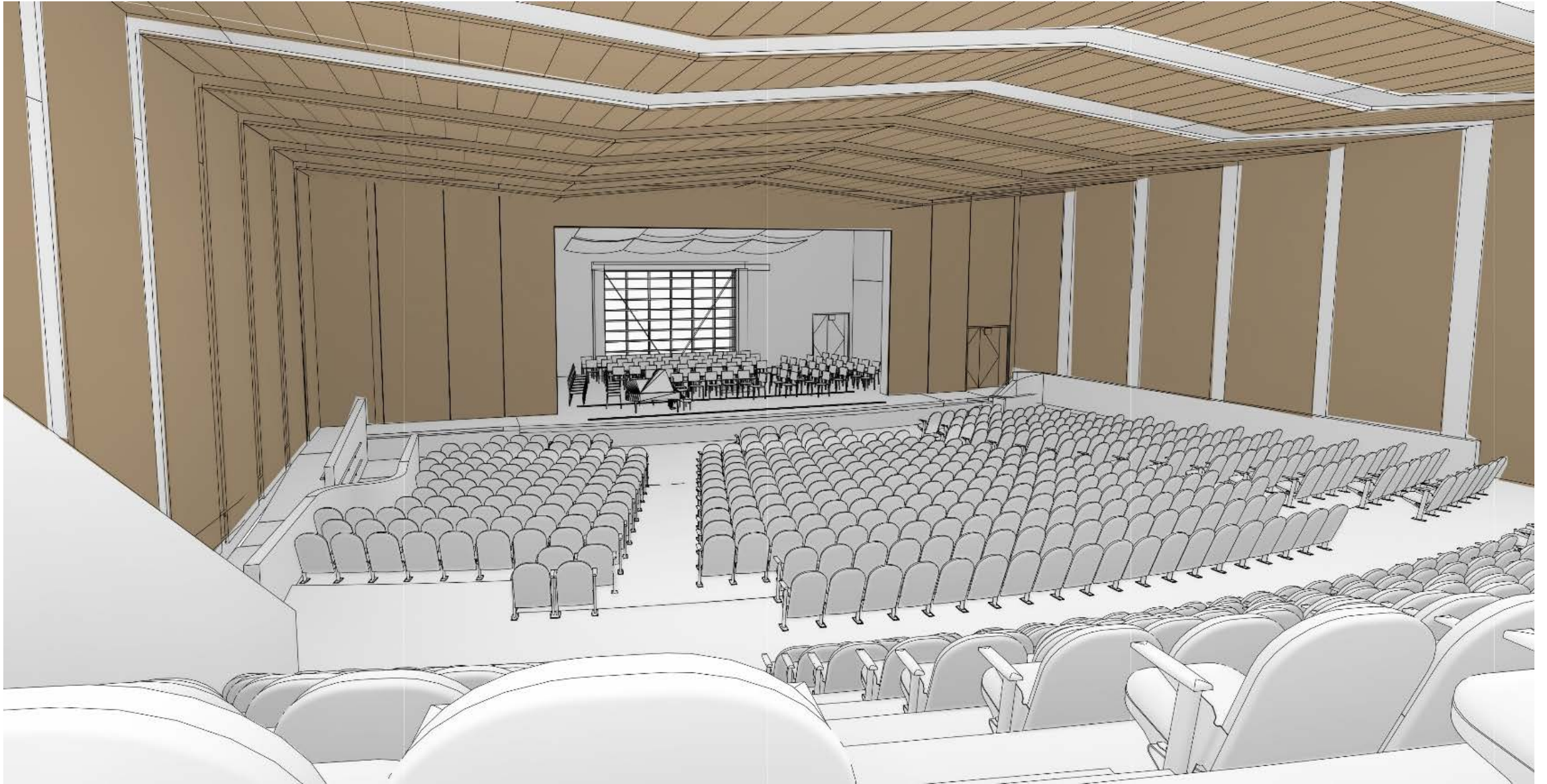
# VIEW FROM ORCHESTRA



**VIEW FROM STAGE RIGHT**



# VIEW FROM TIERED SEATING



## VIEW FROM UPPER LEVEL SEATS



# AUDITORIUM LOBBY INSPIRATIONS



FORM

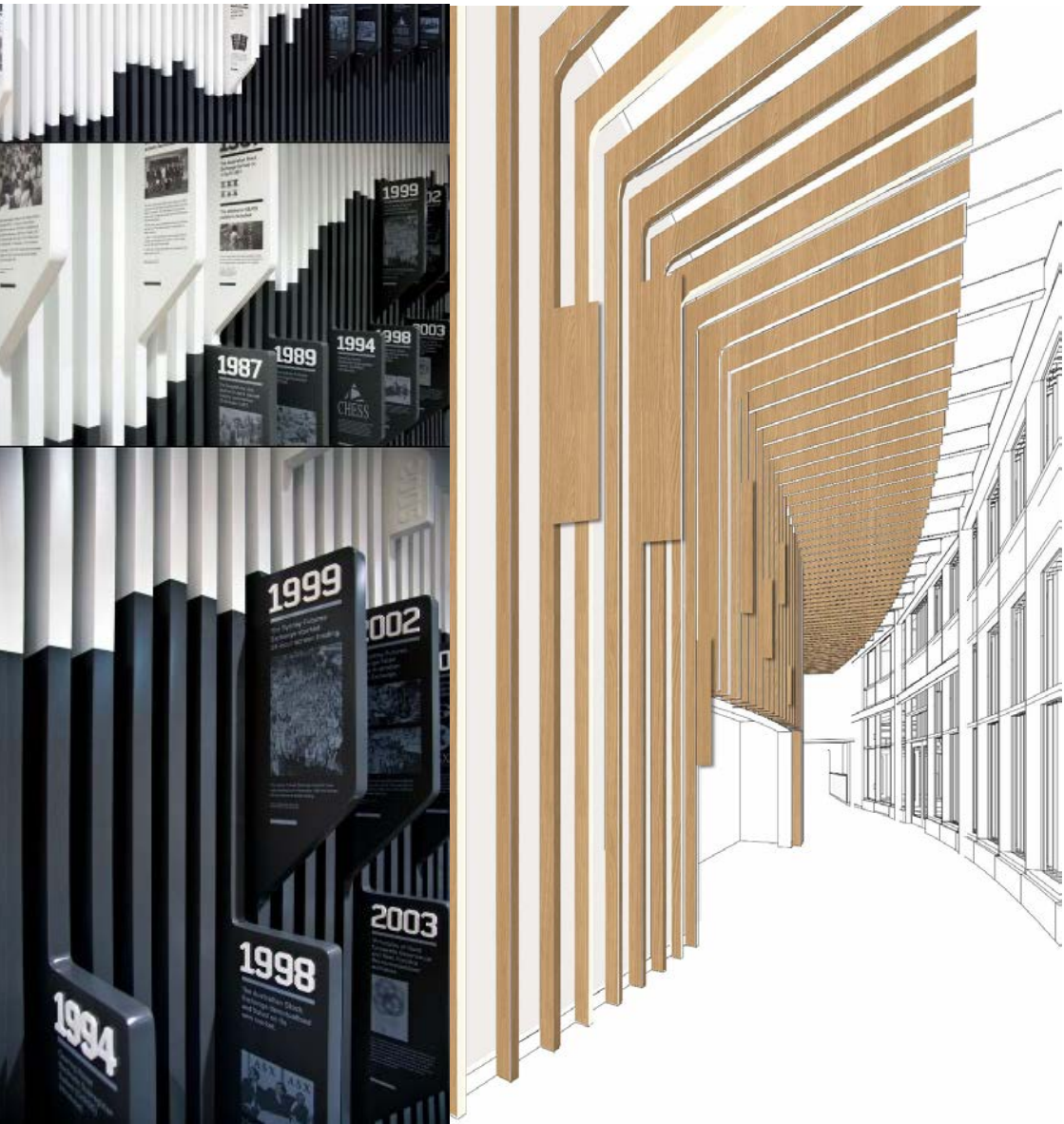


COLOR





# AUDITORIUM LOBBY CONCEPTS

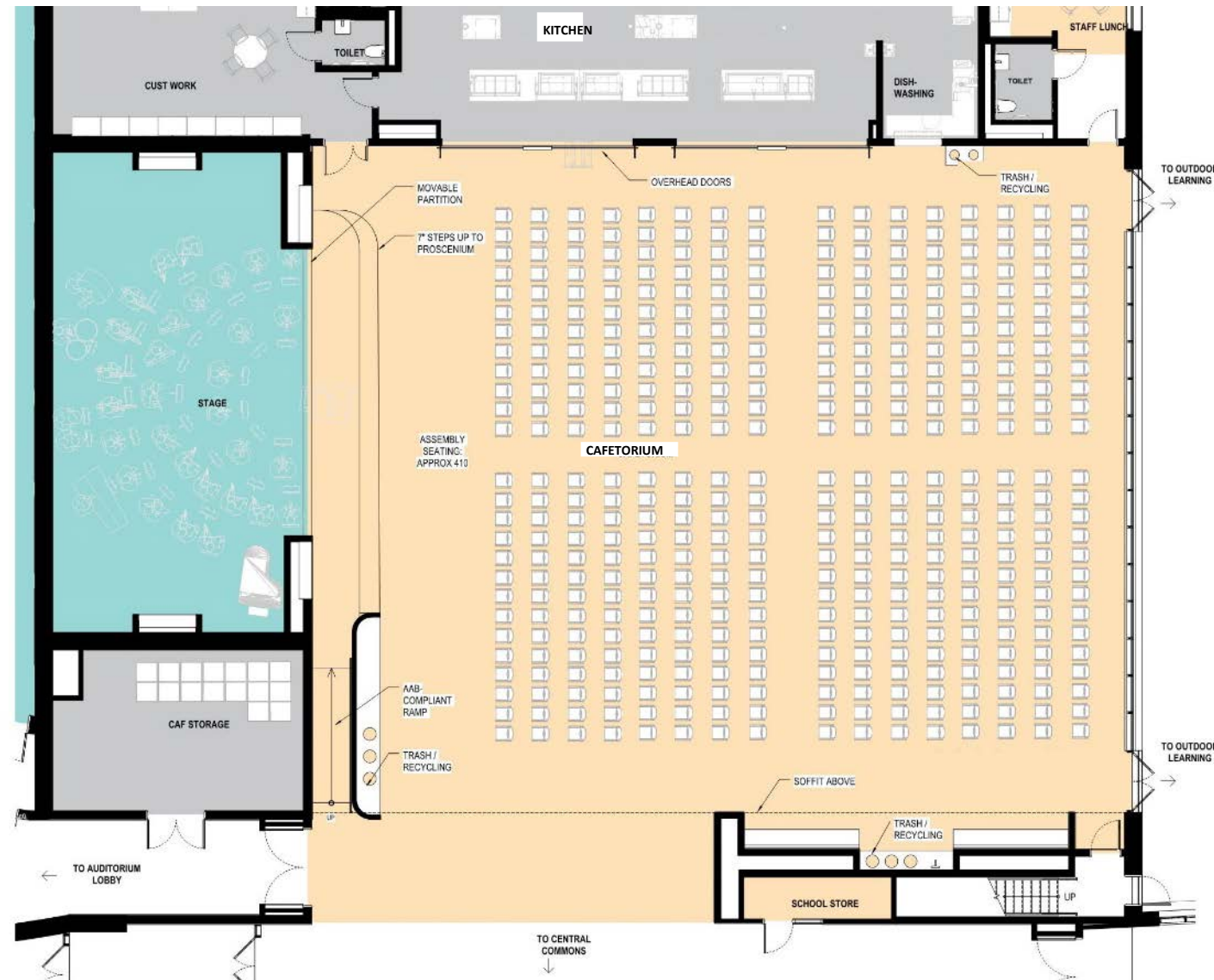


**LOBBY VIEW FROM SOUTH (DESIGN EXPLORATION)**



**LOBBY VIEW FROM SOUTH (DESIGN EXPLORATION)**

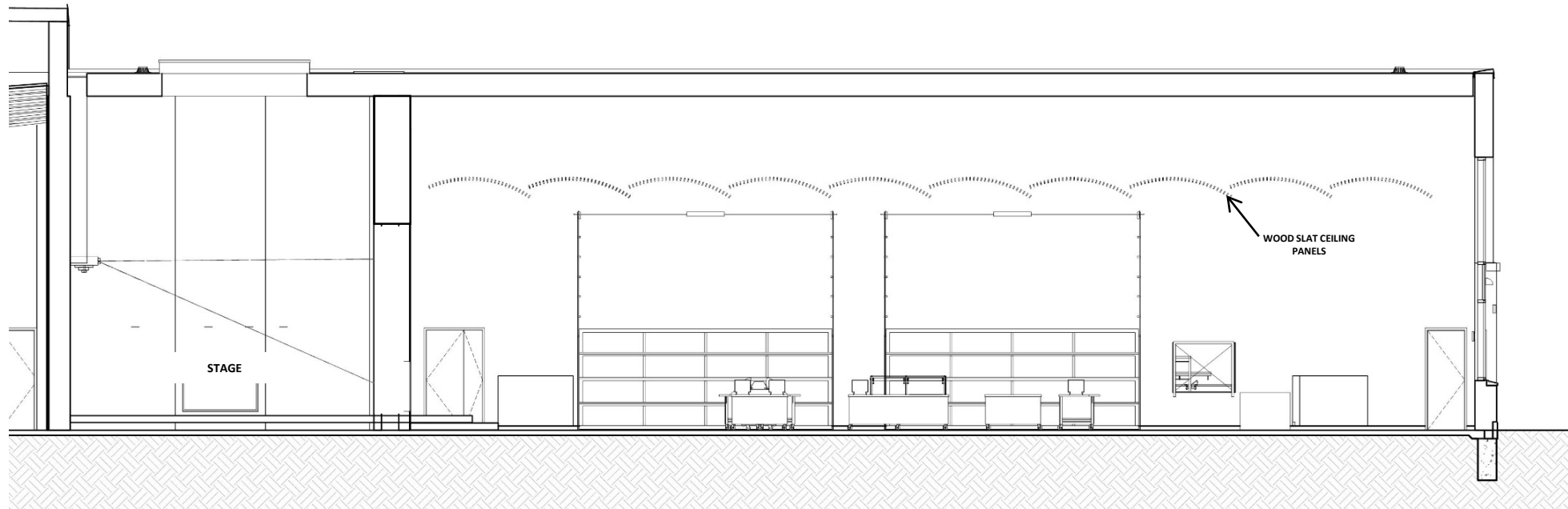
# CAFETORIUM PLAN



**CAFETORIUM PLAN**

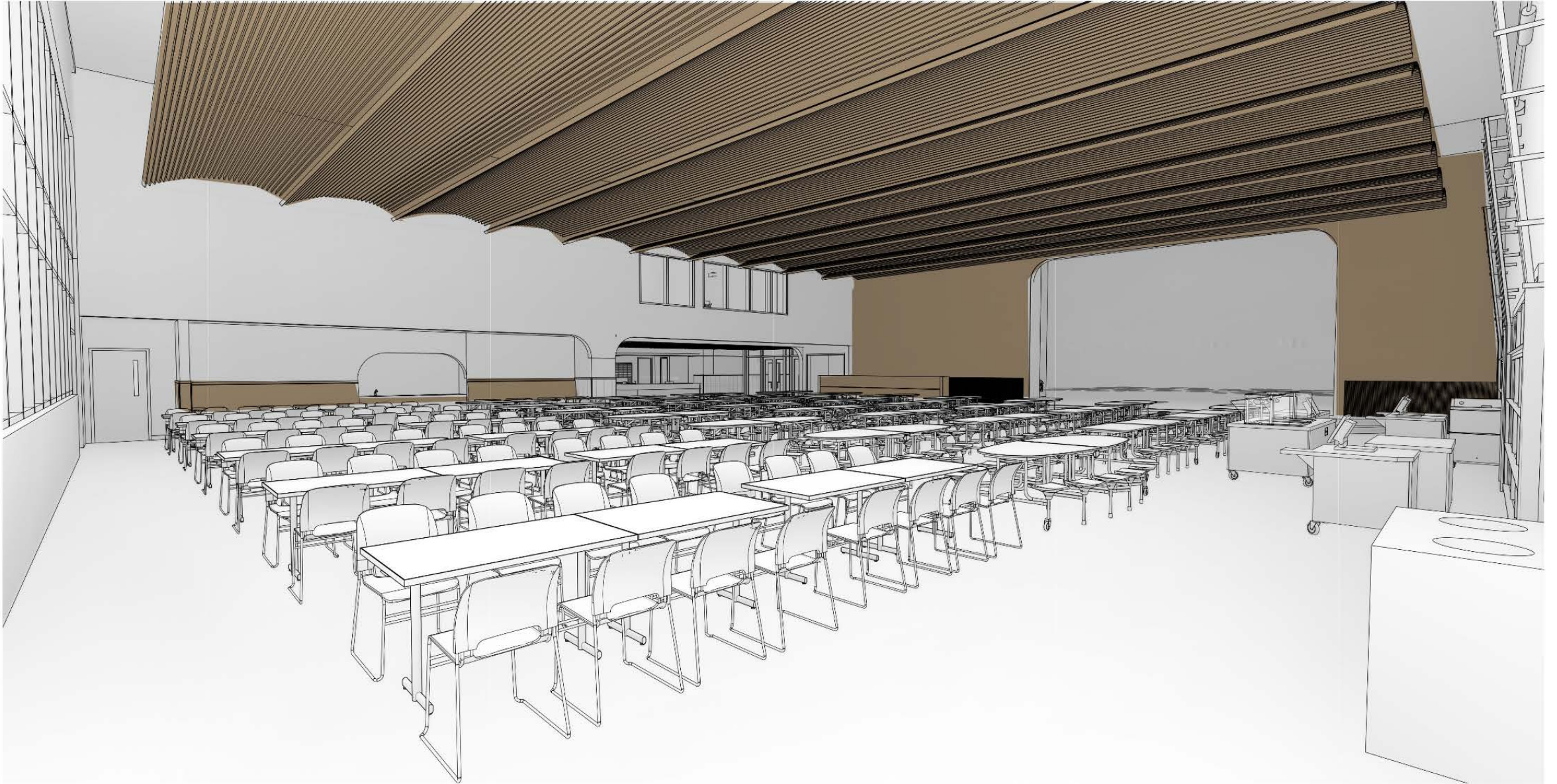


# CAFETORIUM SECTION



**CAFETORIUM SECTION**

# CAFETORIUM RENDERING



**VIEW FROM NORTH EAST CORNER**





# FOCUS GROUP UPDATES

MEP (6/3)

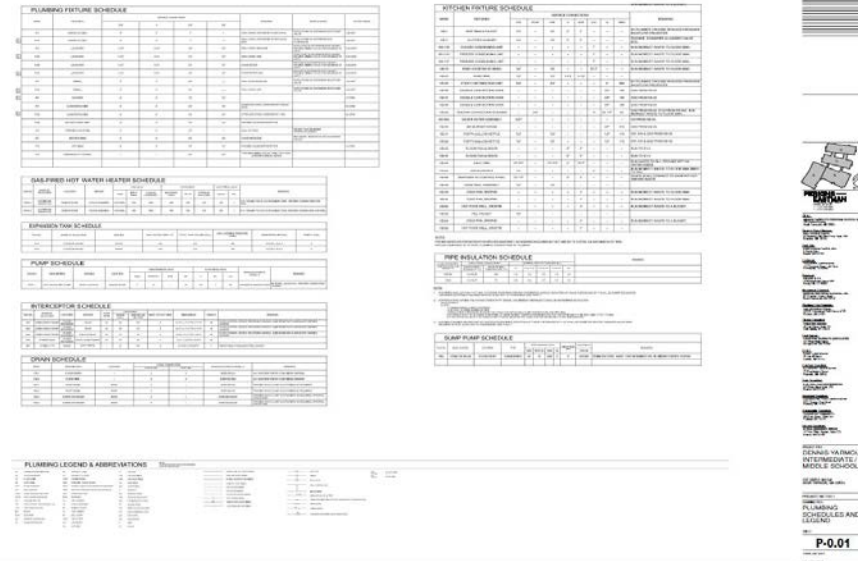
## AGENDA

- Fire Protection
- Plumbing
- Mechanical
- Electrical
- Technology

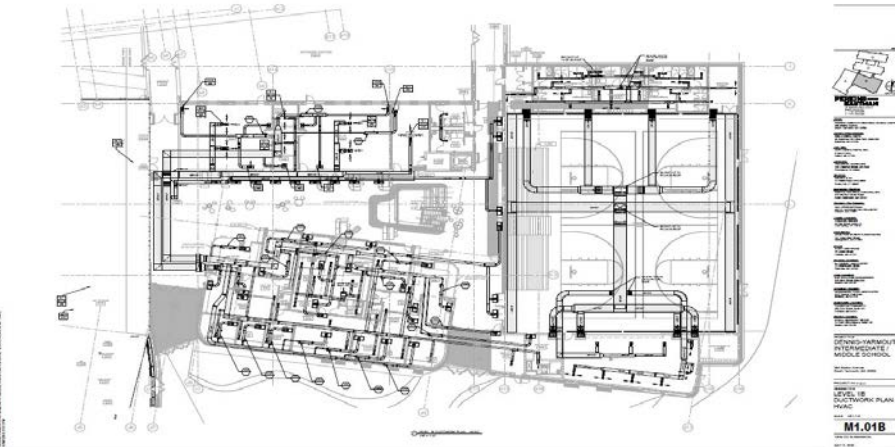
# MEP REVIEW / 'PAGE TURN'



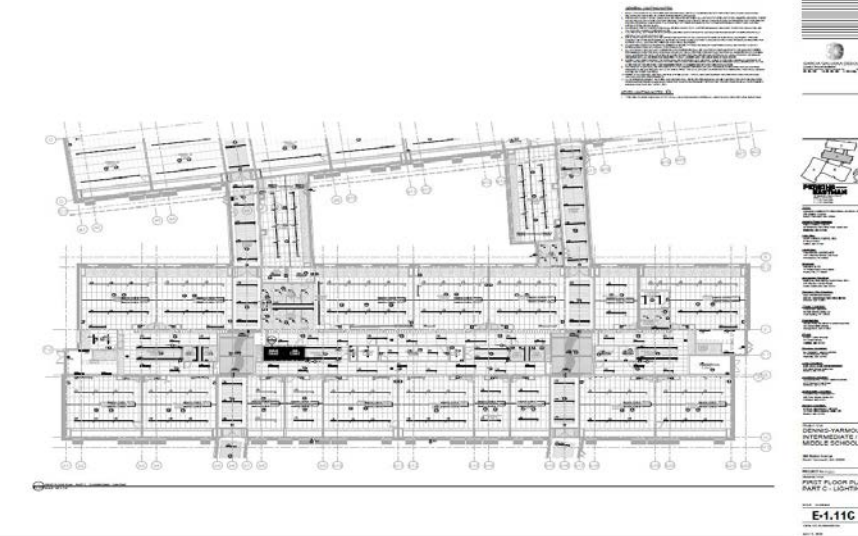
**FIRE PROTECTION**



**PLUMBING**



**MECHANICAL (HVAC)**

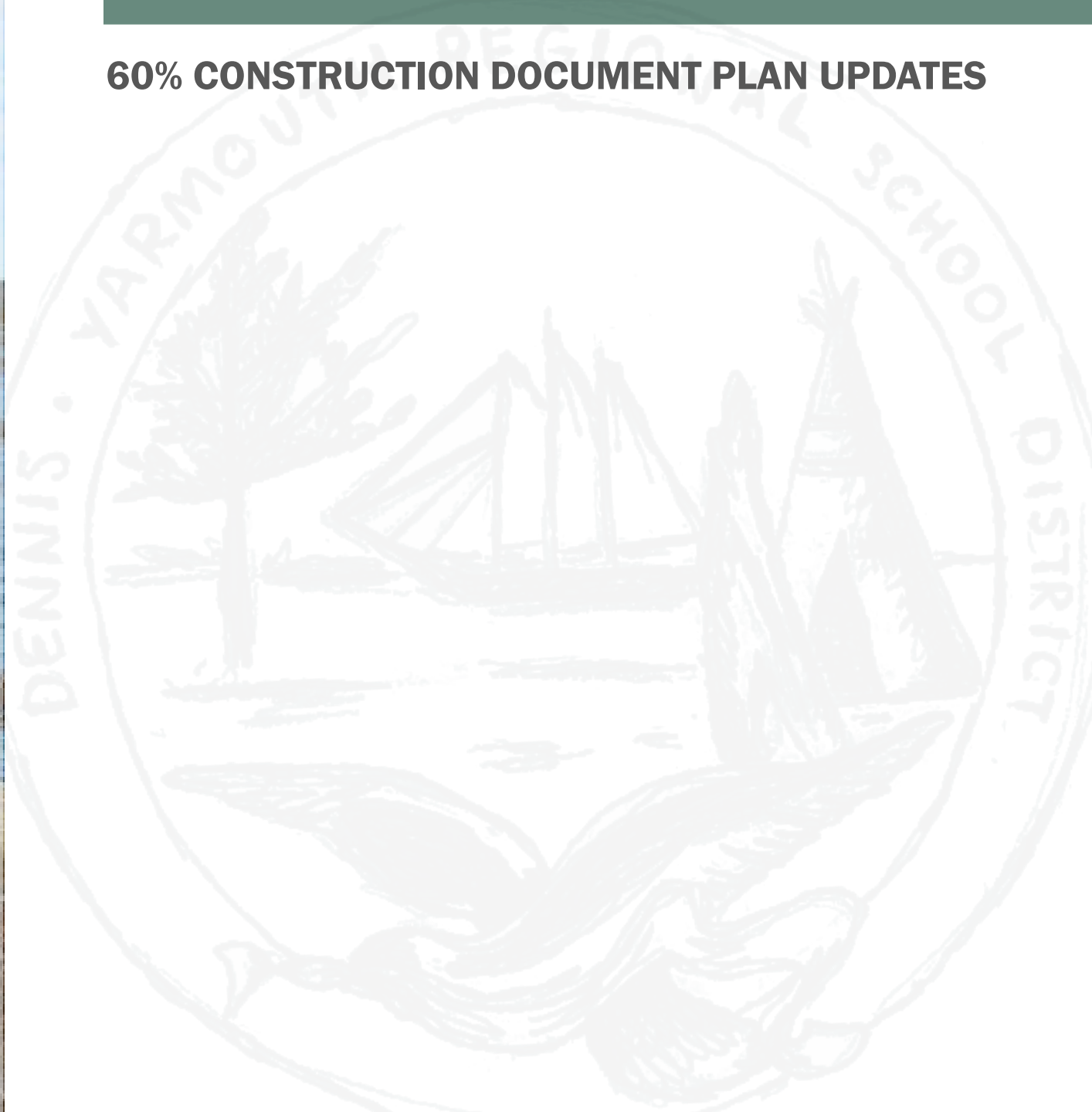


**ELECTRICAL**





## 60% CONSTRUCTION DOCUMENT PLAN UPDATES





# UPDATED PLANS



**LEVEL 1 OVERALL PLAN**



**LEVEL 2 OVERALL PLAN**



# BIRDSEYE VIEW



# KEY DATES

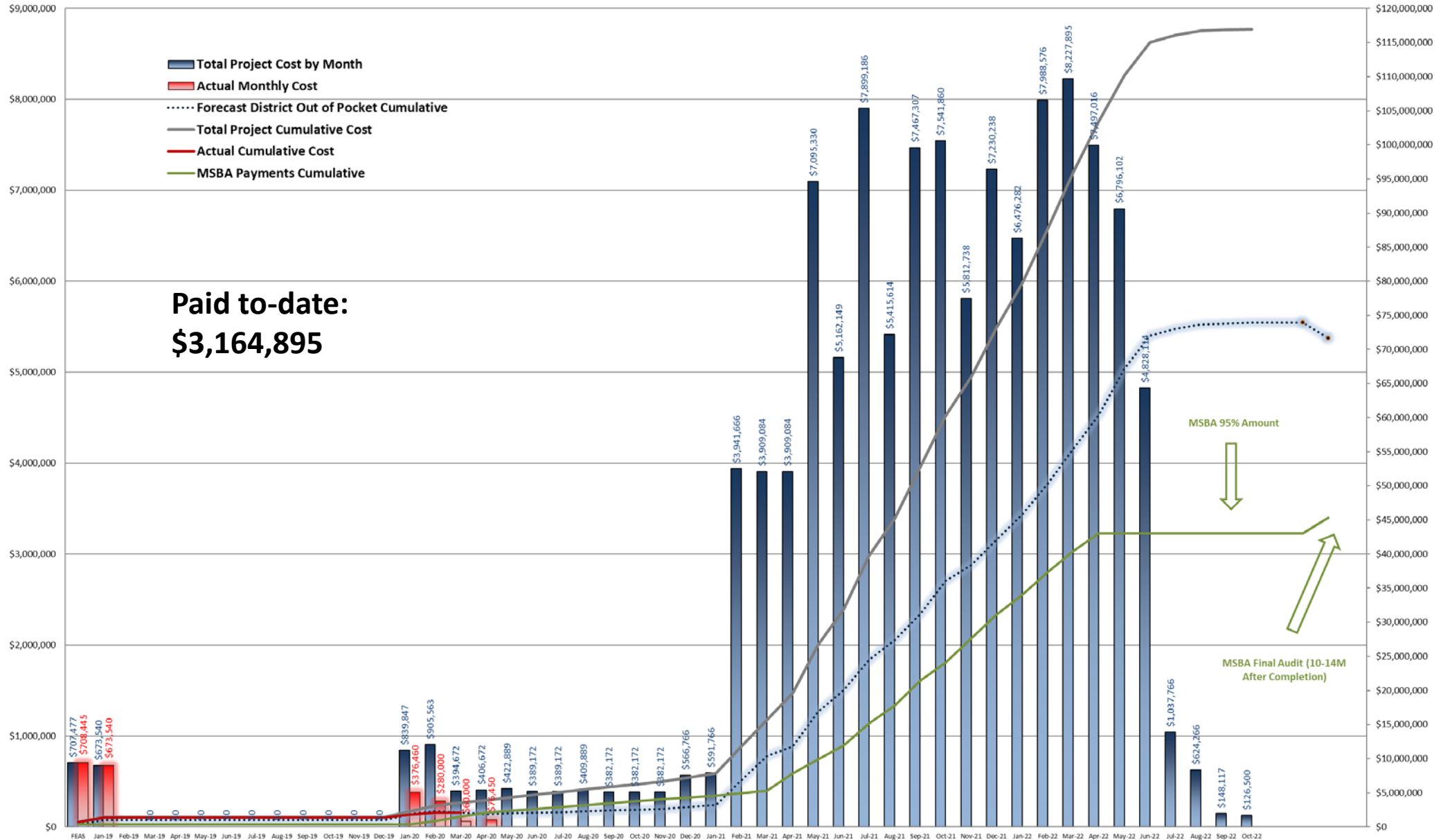
05May20:	Design Development Submission to MSBA
18Sep20:	60% Design Submission to MSBA
20Nov20:	90% Design Submission to MSBA
13Jan21:	100% Construction Documents Complete
14Jan21 -> 17Feb21:	Bidding (added one week to durations due to holiday)
22Feb21 -> 05Mar21:	Contracts executed & construction permitting (SWPPP, NOI, CGP permitting, etc)
TBD:	New Building Substantially Complete
TBD:	Punchlist & Commissioning
TBD:	Furnishings, Equipment, Technology Installation
TBD:	Ready for Occupancy



# 60% CD WORKPLAN

Date	Time	Location	Activity	Description/Comment	Responsible Parties
Tuesday, May 26, 2020	2:00-4:00 PM	Virtual Meeting	Civil/site meeting with DY facilities	Review DD status, Finalize open site design issues with Facilities Director	Arch/Civil/Landscape/District
Tuesday, May 26, 2020	10:00-11:30 AM	Virtual Meeting	LA update: Outdoor Fitness/Playground and courtyards	Review playground / outdoor PE with MS, ES gym teachers, Ads, Principals, staff	Arch/Landscape/District
Thursday, May 28, 2020	2:00-3:30 PM	Virtual Meeting	Campus-wide athletic fields focus/follow up	Review athletics fields w/ HS, ES and MS AD's, interested parents, BC members and Carol/Ken	Arch/Landscape/District
Tuesday, June 2, 2020	2:00-3:30 PM	Virtual Meeting	Auditorium, Performing Arts Meeting	Focus on Performing Arts spaces: ELT, performing arts faculty reps, Carol/Ken	Arch/Theater cons't/EE/District
Wednesday, June 3, 2020	2:00-3:30 PM	Virtual Meeting	MEP Focus Group Meeting	Review MEP systems DD progress and current status (facilities, BC members, Carol/Ken (?))	Arch/MEP/District
<b>Thursday, June 4, 2020</b>	<b>4:30PM</b>	<b>Virtual Meeting</b>	<b>Building Committee Meeting</b>		<b>Arch/District/OPM</b>
Tuesday, June 9, 2020	2:00-4:00 PM	Virtual Meeting	Security Focus Groups, Police, EMS, IT	Review of overall security design	Arch/EE/Security Cons./District
Thursday, June 11, 2020	2:00-4:00 PM	Virtual Meeting	Interior Design Focus (central commons-pub areas)	Focus on	Arch/P-L-S/District
Tuesday, June 16, 2020	2:00-3:00 PM	Virtual Meeting	Focus on outdoor performance ampitheater	Design review / working session for performance ampitheater	Arch/Landscape/MEP/District
Wednesday, June 17, 2020	2:00-3:30 PM	Virtual Meeting	LEED & Integrative Design	Final LEED / Sustainability / integrative design follow-up	Arch/TT/MEP/Civil-LA/District
Thursday, June 18, 2020	2:00-3:30 PM	Virtual Meeting	Interior wrap up - Media Center, Auditorium, Perf. arts	Final sign offs on performance arts meeting / sign offs: ELS, performing arts teachers, Carol/Ken	Arch/Theater cons't/EE/District
Friday, June 19, 2020	2:00-3:00 PM	Virtual Meeting	Solar array w/ Cape / Light and Liz Argo (solar provider)	Coordination for solar array installation / utility connections	Arch/EE/Utility/District
Tuesday, June 23, 2020	2:00-3:00 PM	Virtual Meeting	Campus-wide athletic fields focus/follow up	Follow-up meeting on athletic fields obtain final sign offs	Arch/Landscape/District
<b>Thursday, July 9, 2020</b>	<b>4:30PM</b>	<b>Virtual Meeting</b>	<b>Building Committee Meeting</b>		<b>Arch/District/OPM</b>
<b>Tuesday, August 18, 2020</b>			<b>60% CD Drawings to Estimators</b>		
<b>Tuesday, September 8, 2020</b>			<b>60% CD Estimates Due</b>		
<b>Thursday, September 10, 2020</b>	<b>9:00 AM</b>	<b>Virtual Meeting</b>	<b>60% CD Estimate Reconciliation Meeting</b>		<b>Estimators/OPM</b>
<b>Thursday, September 17, 2020</b>	<b>4:30PM</b>	<b>Virtual Meeting</b>	<b>Building Committee Meeting</b>	<b>60% VM meeting and Vote to Submit</b>	<b>Arch/District/OPM</b>
<b>Tuesday, September 22, 2020</b>			<b>60% CD Submission to MSBA</b>		
Wednesday, October 21, 2020	TBD		Submit Plans for Zoning Review		Yarmouth Zoning Board
Wednesday, October 21, 2020	TBD		Submit NOI (BRP WPA Form 3)		Conservation Comm. + MA DEP

# PROJECT CASHFLOW





## NEW BUSINESS

- New Business
- Public Comment Period
- Motion to Adjourn

# **THANK YOU**





**PERKINS —  
EASTMAN**

Photo courtesy of TripAdvisor



# **DENNIS-YARMOUTH SCHOOL PROJECT**

**THE DYIMS SCHOOL BUILDING  
COMMITTEE**



**PMA Consultants**