



**PERKINS —
EASTMAN**

Photo courtesy of TripAdvisor



DENNIS-YARMOUTH SCHOOL PROJECT

SCHOOL BUILDING COMMITTEE

January 31, 2018



SCHEDULE AND DECISIONS

Wednesday, Jan. 10 – SBC (review options - preferred site)

Wednesday, Jan. 31 – Abutters Meeting - I

Wednesday, Jan. 31 – SBC (option refinements, massing & shadow studies)

Thursday, Feb. 15 – SBC (options refinements + systems & energy modeling)

Wednesday, Feb. 28 - SBC Selection of Preferred Solution

Wednesday, Mar. 7- SBC (final scope review, what's in/what's out)

Wednesday, Mar. 7 - Local Actions & Approvals of Solution (BoS/Fin Com/SC)

Wednesday, Apr. 11 - SBC (cost discussion)

Monday, Apr 23 - Joint BoS, Finance, School Committee (update)

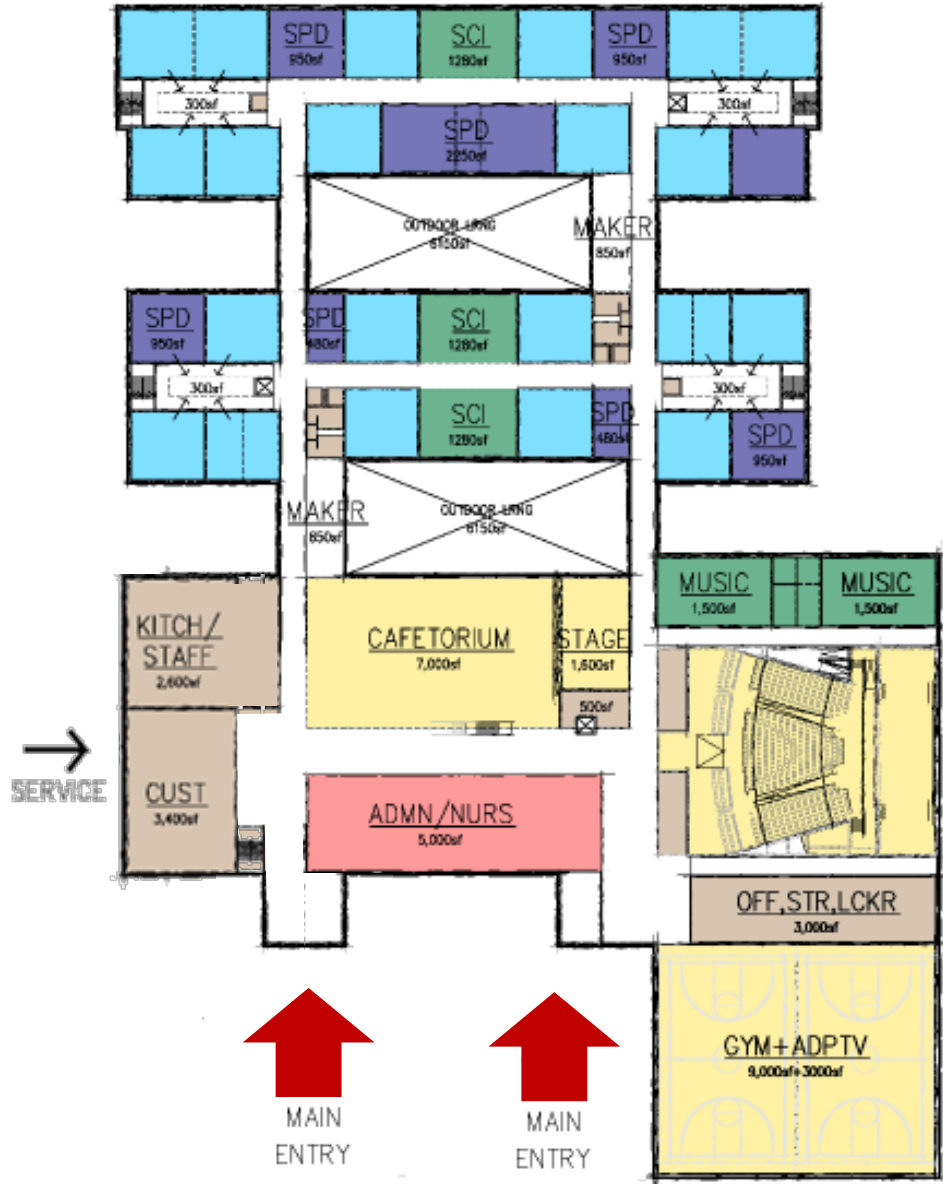
Wednesday, Apr. 25 – SBC (vote to submit Preferred Schematic Report)

Wednesday, May 9 - Compile & Submit PSR

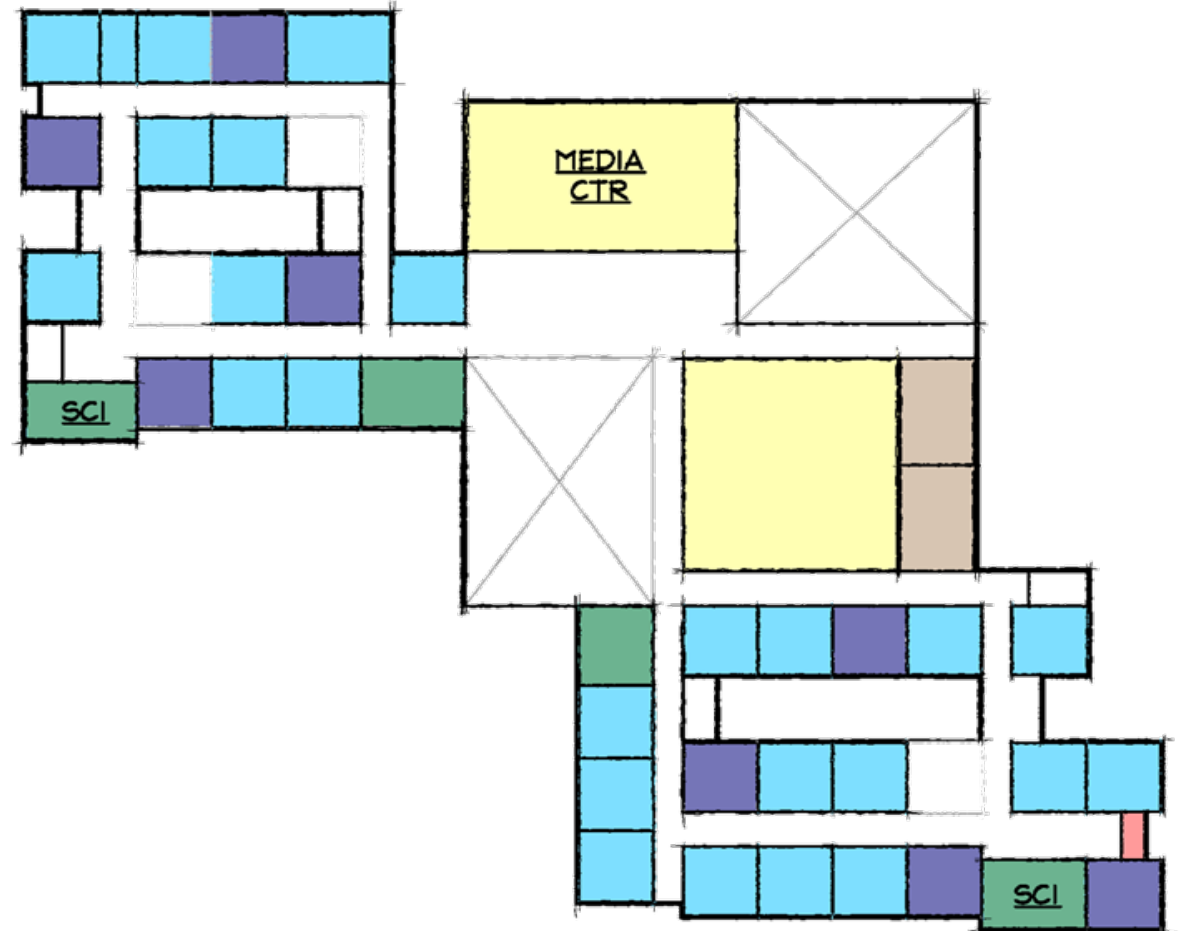
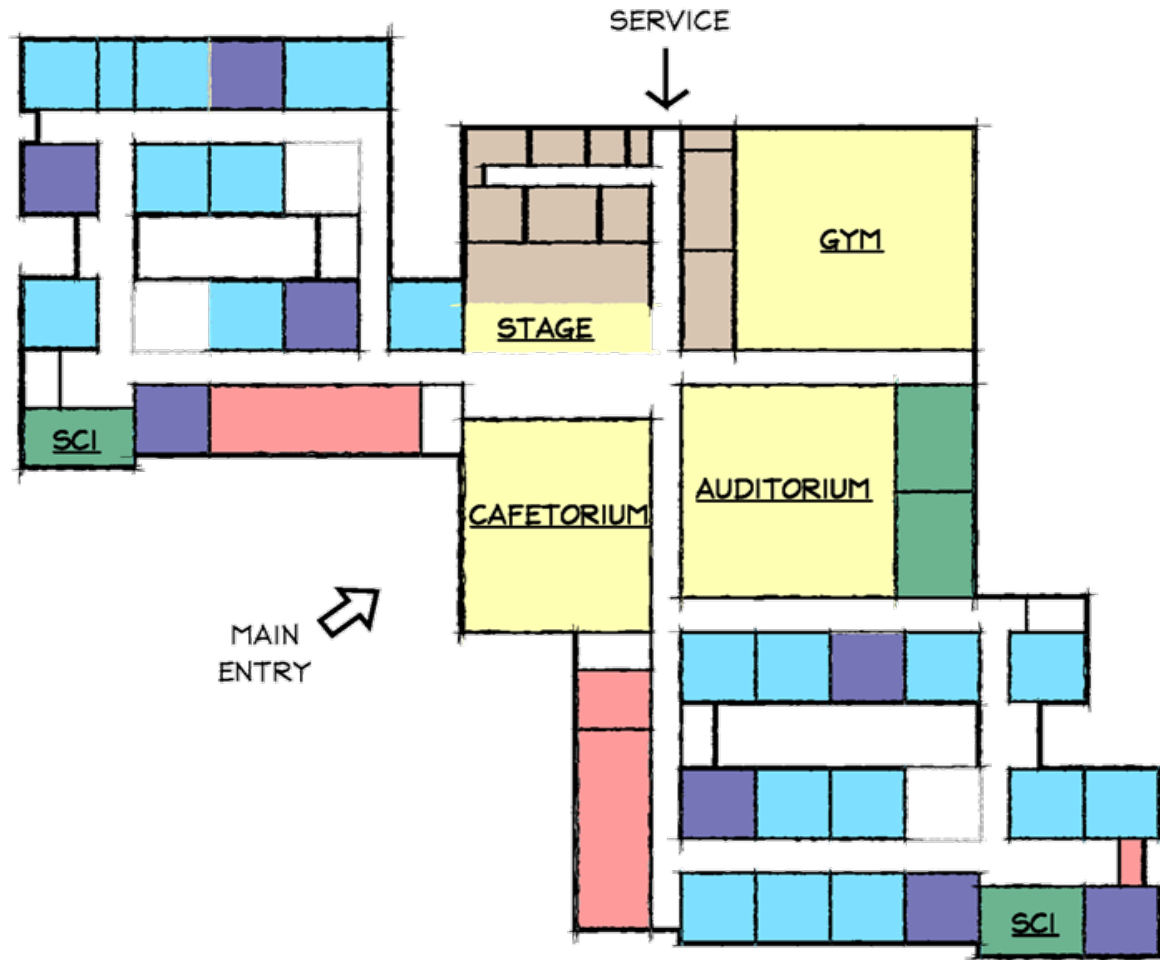
Wednesday, May 23 - MSBA Facilities Assessment Subcommittee Meeting

Wednesday, Jun. 27 - MSBA Board of Directors (for PSR approval)

S6 - COMMUNITY FRONT



S4 - COMMUNITY MIDDLE

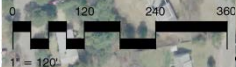


PREFERRED OPTIONS (GR. 4-7)

 <p>Preferred Plan</p>	 <p>Not Ideal Plan (Study Courtyd)</p>	 <p>Preferred Plan</p>	 <p>Preferred Plan</p>	 <p>Preferred Plan</p>	 <p>Encroaches ES</p>	 <p>Not Ideal Plan</p>
<p>S2 COMMUNITY FRONT STATION AVE SITE-WEST</p>	<p>S2 COMM MID+WINGS STATION AVE SITE-WEST</p>	<p>S4 COMMUNITY FRONT STATION AVE SITE-BACK</p>	<p>S4 COMM MID+CRT YDS STATION AVE SITE-BACK</p>	<p>S6 COMMUNITY FRONT STATION AVE SITE-MID.</p>	<p>S6 COMM MID+CRT YDS STATION AVE SITE-MID.</p>	<p>S6 COMMUNITY SPINE STATION AVE SITE-MID.</p>
<p>Relatively Flat Site, 70 acres total (40 useable with approximately 25 developed), Limited Constraints (Aquafer Protection Distr. and Adjacent Wetland)</p>						
<p><u>Site/Traffic Considerations:</u> Dedicated Access Long Car Que (Off-Street) Limited Field Disturbance Limited Campus Connect'n No Civic Presence Proximity to Homes Proximity to SES Major Tree Clearing Req'd</p>	<p><u>Site/Traffic Considerations:</u> Dedicated Access Long Car Que (Off-Street) Limited Field Disturbance Limited Campus Connect'n No Civic Presence Proximity to Homes Major Tree Clearing Req'd</p>	<p><u>Site/Traffic Considerations:</u> Modest Field Disturbance Long Car Que (Off-Street) Comb./Relocated Access Modest Campus Connect'n No Civic Presence Proximity to Apartments Solar Field Approach Pinch Major Tree Clearing Req'd</p>	<p><u>Site/Traffic Considerations:</u> Modest Field Disturbance Long Car Que (Off-Street) Comb./Relocated Access Modest Campus Connect'n No Civic Presence Proximity to Maintenance Solar Field Approach Pinch Major Tree Clearing Req'd Major Int. Traffic Impact</p>	<p><u>Site/Traffic Considerations:</u> No Field Replication Req'd Moderate Car Que (Off-St) Additional Access Point Good Campus Connectivity Civic Presence/Frontage Solar Array Relocation Moderate Tree Clearing Major Int. Traffic Impact</p>	<p><u>Site/Traffic Considerations:</u> No Field Replication Req'd Moderate Car Que (Off-St) Comb./Relocated Access Good Campus Connectivity Civic Presence/Frontage Proximity to SES Solar Array Relocation Moderate Tree Clearing Modest Int. Traffic Impact</p>	<p><u>Site/Traffic Considerations:</u> No Field Replication Req'd Minimal Car Que (Off-St) Comb./Relocated Access Good Campus Connectivity Civic Presence/Frontage Solar Array Relocation Moderate Tree Clearing</p>
<p><u>Plan Considerations:</u> One School Look/Sep. Feel Cont. CRs/Config Flexibility Consolidated Comm Zone Admin Separate from CRs Closed Court Yards (Maint)</p>	<p><u>Plan Considerations:</u> Two School Look and Feel Sep. CR Wings (not as Flex) Consolidated Comm Zone Admin Connected to CRs No Crt Yd Contain (Maint)</p>	<p><u>Plan Considerations:</u> One School Look/Sep. Feel Cont. CRs/Config Flexibility Consolidated Comm Zone Admin Separate from CRs Closed Court Yards (Maint)</p>	<p><u>Plan Considerations:</u> Two School Look and Feel Sep. CR Wings (not as Flex) Consolidated Comm Zone Admin Connected to CRs No Crt Yd Contain (Maint)</p>	<p><u>Plan Considerations:</u> One School Look/Sep. Feel Cont. CRs/Config Flexibility Consolidated Comm Zone Admin Separate from CRs Closed Court Yards (Maint)</p>	<p><u>Plan Considerations:</u> Two School Look and Feel Sep. CR Wings (not as Flex) Consolidated Comm Zone Admin Connected to CRs No Crt Yd Contain (Maint)</p>	<p><u>Plan Considerations:</u> Two School Look and Feel Cont. CRs/Config Flexibility Spread Out Comm Zone Admin Separate from CRs Semi-Closed Crt Yd (Maint) Main Entries Not in Front</p>
<p><u>Cost Considerations:</u> Total Cost District Share Operations</p>	<p><u>Cost Considerations:</u> Total Cost District Share Operations</p>	<p><u>Cost Considerations:</u> Total Cost District Share Operations</p>	<p><u>Cost Considerations:</u> Total Cost District Share Operations</p>	<p><u>Cost Considerations:</u> Total Cost District Share Operations</p>	<p><u>Cost Considerations:</u> Total Cost District Share Operations</p>	<p><u>Cost Considerations:</u> Total Cost District Share Operations</p>

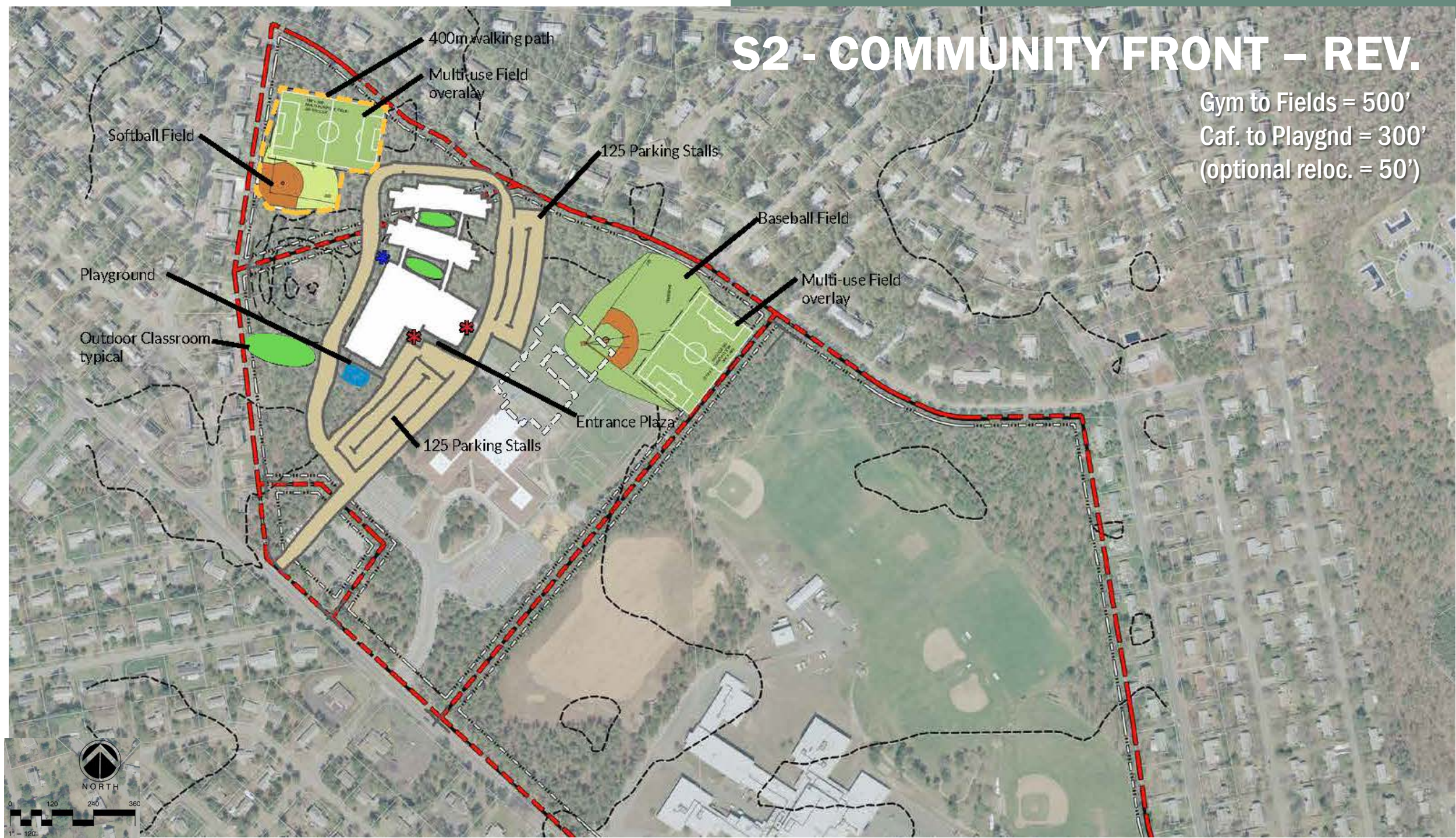
S2 - COMMUNITY FRONT

REPLACED W/ UPDATE



S2 - COMMUNITY FRONT – REV.

Gym to Fields = 500'
Caf. to Playgnd = 300'
(optional reloc. = 50')



S2 - COMM MIDDLE (+WINGS)

CHANGE TO CRTYD PLAN



S2 - COMM MIDDLE (COURTYDS)

Gym to Fields = 300'
Caf. to Playgnd = 300'
(optional reloc. = 50')

Softball Field

Service

Playground

68 Parking Stalls

Baseball Field

Multi-use Field overlay

135 Parking Stalls

Multi-use Field

400m Walking Path

35 Parking Stalls



S4 - COMMUNITY FRONT

REPLACED WITH UPDATE



0 120 240 360
1" = 120'

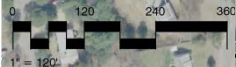
S4 - COMMUNITY FRONT – REV.

Gym to Fields = 100'
Caf. to Playgnd = 50'



S4 - COMMUNITY MIDDLE

REPLACED IN THE UPDATE



S4 - COMMUNITY MIDDLE – REV.

Gym to Fields = 300'
Caf. to Playgnd = 300'
(optional reloc. = 100')

Baseball Field

Baseball Field

Multi-use Field
overlay

145 Parking Stalls

Service

Playground

400m Walking Path

Multi-use Field

Multi-use Field

Softball Field

106 Parking Stalls



S6 - COMMUNITY FRONT

REPLACED W/ UPDATE



0 120 240 360

1" = 120'

S6 - COMMUNITY FRONT - REV.

Gym to Fields = 50'
Caf. to Playgnd = 50'



S6 - COMMUNITY MIDDLE

NOT REFINED FURTHER



S6 - COMMUNITY SPINE

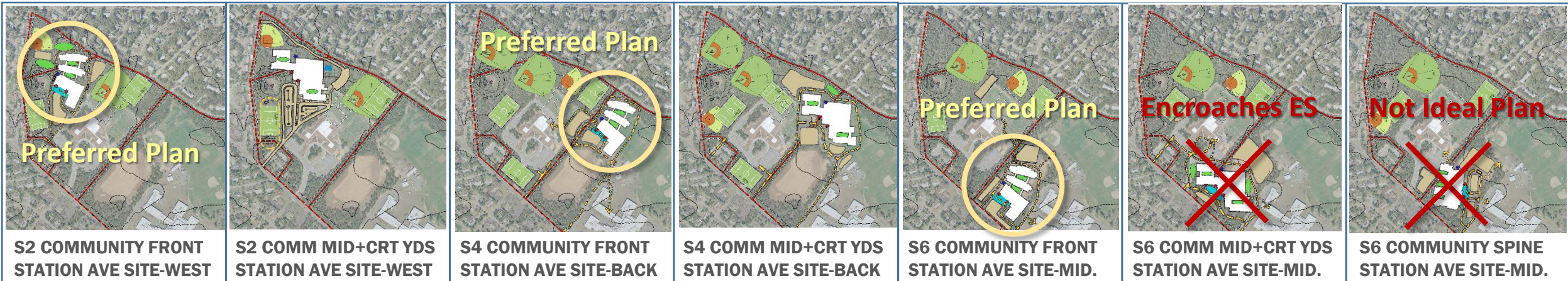
NOT REFINED FURTHER



0 120 240 360

1" = 120'

PREFERRED OPTIONS (GR. 4-7)



Relatively Flat Site, 70 acres total (40 useable with approximately 25 developed), Limited Constraints (Aquafer Protection Distr. and Adjacent Wetland)

Site/Traffic Considerations:

- Dedicated Access
- Long Car Que (Off-Street)
- Limited Field Disturbance
- Limited Campus Connect'n
- No Civic Presence
- Proximity to Homes
- Proximity to SES
- Major Tree Clearing Req'd

Plan Considerations:

One School Look/Sep. Feel
Cont. CRs/Config Flexibility
Consolidated Comm Zone
Admin Separate from CRs
Closed Court Yards (Maint)

Cost Considerations:

Total Cost
District Share
Operations

Site/Traffic Considerations:

- Dedicated Access
- Long Car Que (Off-Street)
- Limited Field Disturbance
- Limited Campus Connect'n
- No Civic Presence
- Proximity to Homes
- Major Tree Clearing Req'd

Plan Considerations:

Two School Look and Feel
Sep. CR Wings (not as Flex)
Consolidated Comm Zone
Admin Connected to CRs
No Crt Yd Contain (Maint)

Cost Considerations:

Total Cost
District Share
Operations

Site/Traffic Considerations:

- Modest Field Disturbance
- Long Car Que (Off-Street)
- Comb./Relocated Access
- Modest Campus Connect'n
- No Civic Presence
- Proximity to Apartments
- Solar Field Approach Pinch
- Major Tree Clearing Req'd

Plan Considerations:

One School Look/Sep. Feel
Cont. CRs/Config Flexibility
Consolidated Comm Zone
Admin Separate from CRs
Closed Court Yards (Maint)

Cost Considerations:

Total Cost
District Share
Operations

Site/Traffic Considerations:

Modest Field Disturbance
Long Car Que (Off-Street)
Comb./Relocated Access
Modest Campus Connect'n
No Civic Presence
Proximity to Maintenance
Solar Field Approach Pinch
Major Tree Clearing Req'd
Major Int. Traffic Impact

Plan Considerations:

Two School Look and Feel
Sep. CR Wings (not as Flex)
Consolidated Comm Zone
Admin Connected to CRs
No Crt Yd Contain (Maint)

Cost Considerations:

Total Cost
District Share
Operations

Site/Traffic Considerations:

No Field Replication Req'd
Moderate Car Que (Off-St)
Additional Access Point
Good Campus Connectivity
Civic Presence/Frontage

Solar Array Relocation
Moderate Tree Clearing
Major Int. Traffic Impact

Plan Considerations:

One School Look/Sep. Feel
Cont. CRs/Config Flexibility
Consolidated Comm Zone
Admin Separate from CRs
Closed Court Yards (Maint)

Cost Considerations:

Total Cost
District Share
Operations

Site/Traffic Considerations:

No Field Replication Req'd
Moderate Car Que (Off-St)
Comb./Relocated Access
Good Campus Connectivity
Civic Presence/Frontage
Proximity to SES

Plan Considerations:

Two School Look and Feel
Sep. CR Wings (not as Flex)
Consolidated Comm Zone
Admin Connected to CRs
No Crt Yd Contain (Maint)

Cost Considerations:

Total Cost
District Share
Operations

Site/Traffic Considerations:

- No Field Replication Req'd
- Minimal Car Que (Off-St)
- Comb./Relocated Access
- Good Campus Connectivity
- Civic Presence/Frontage

Solar Array Relocation
Moderate Tree Clearing

Plan Considerations:

- Two School Look and Feel
- Cont. CRs/Config Flexibility
- Spread Out Comm Zone
- Admin Separate from CRs
- Semi-Closed Crt Yd (Maint)
- Main Entries Not in Front

Cost Considerations:

Total Cost
District Share
Operations

MASSING STUDIES - EXISTING





**PERKINS —
EASTMAN**

Photo courtesy of TripAdvisor



DENNIS-YARMOUTH SCHOOL PROJECT

SCHOOL BUILDING COMMITTEE

January 31, 2018

