



DENNIS-YARMOUTH SCHOOL PROJECT

THE DYIMS SCHOOL BUILDING
COMMITTEE

March 3, 2022

PERKINS
SNIDER
FASTMAN





AGENDA

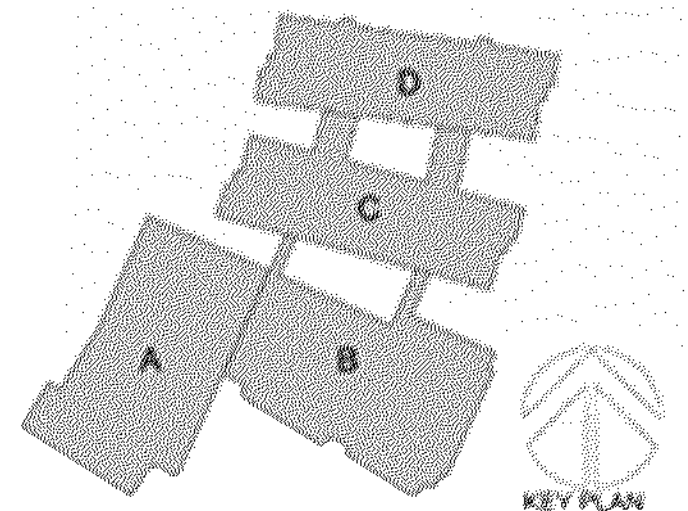
Estimated Time Frame

I.	Chair Joseph Tierney Call to Order	4:30 P.M.
II.	Approval of Prior Meeting Minutes Discussion Motion and Second Needed Vote to Approve	4:30 P.M.
III.	Overview of Meeting Agenda Joe Tierney – SBC Chair	4:35 P.M.
IV.	Construction Update a. Progress Photos b. Progress Update c. Lookahead Schedule	4:35 P.M.
V.	Design Update a. Field Lighting i. Design Update b. SAE Entrance at New School i. Design Update c. Exterior Seashell Concrete i. Design Update	4:45 P.M.
VI.	FFE/IT Update a. Status Update i. Budget Discussion ii. VOTE	5:00 P.M.
VII.	Project Budget & Cashflow a. Cashflow Update b. Change Authorization Overview i. VOTE (if required): on any discretionary changes in excess of \$25k not previously authorized.	5:25 P.M.
VIII.	New Business	5:35 P.M.
IX.	Meeting Adjournment	5:35 P.M.

FEBRUARY CONSTRUCTION UPDATE

February ACTIVITIES

- Duct and Pipe Installation in Building C
- Roof complete in Building A, Media Center, Auditorium
- Finish North, East and South Masonry Walls at the Gymnasium
- Continued Installation of Interior LGMF in Building B & A
- Continued Installation of Exterior Sheathing on Building B & A
- Window installation in C building
- Curtain wall installation on D building corridors
- Field B retaining wall installation
- Building B spray fireproofing
- Building D precast and masonry installation



CONSTRUCTION PROGRESS PHOTOS



Building B Slab on Grade

CONSTRUCTION PROGRESS PHOTOS



Mock up substantially complete

CONSTRUCTION PROGRESS PHOTOS



Field B retaining wall installation

CONSTRUCTION PROGRESS PHOTOS



AVB and attachment clips installed on
D wing

CONSTRUCTION PROGRESS PHOTOS

Insulated pipes in D Building



CONSTRUCTION PROGRESS PHOTOS



Precast base being installed on D building

CONSTRUCTION PROGRESS PHOTOS

Building D Exterior Façade Progress

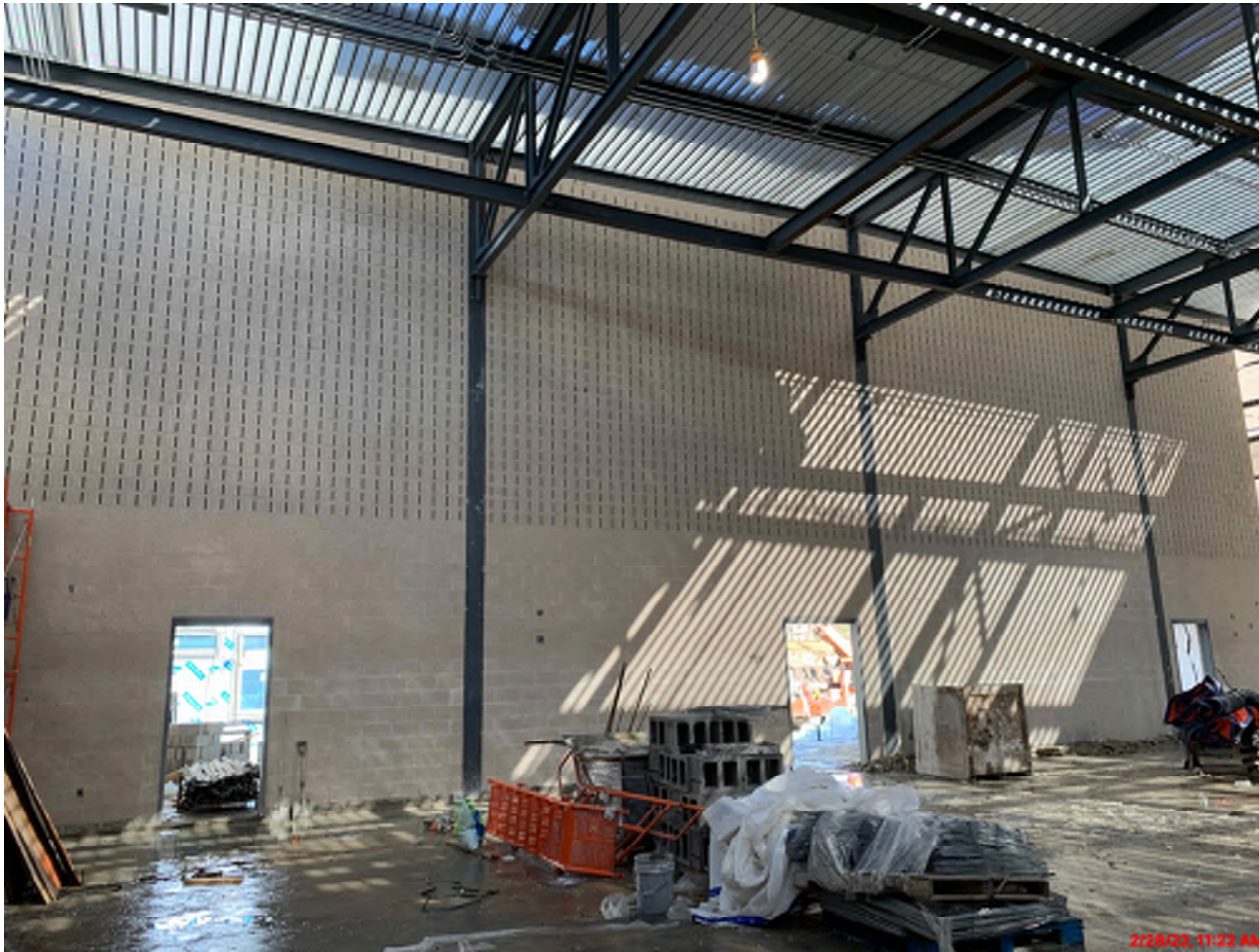


CONSTRUCTION PROGRESS PHOTOS



Spray Fireproofing on Second
Floor of Building B

CONSTRUCTION PROGRESS PHOTOS



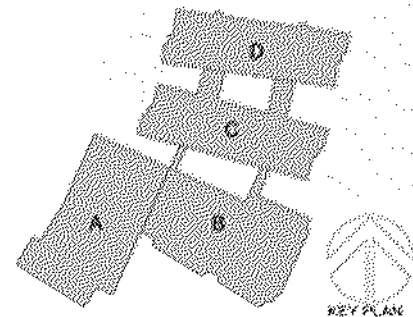
CMU walls at the gym

CONSTRUCTION UPDATE



LOOKAHEAD SCHEDULE

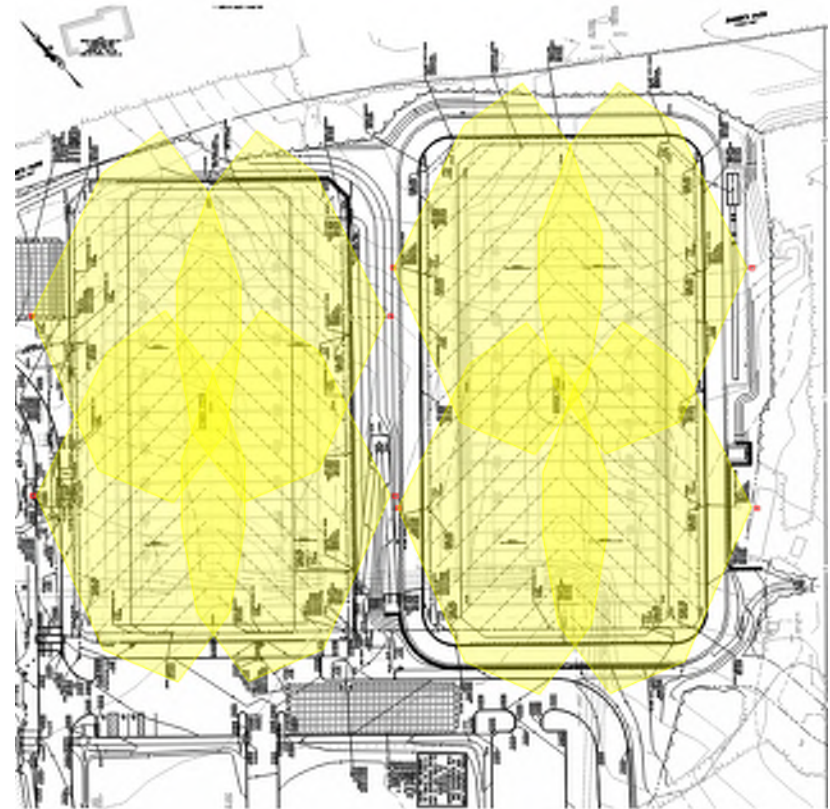
- Place Slab on Grade in Building A
- Curtainwall installation
- Duct and Pipe Installation in Building C
- Continue Spray Fireproofing
- Roofing at the gym
- Rough MEPs in building B
- Continue with field retaining walls
- Start sitework at the turf fields



DESIGN UPDATE – LIGHTING AT SYNTHETIC TURF FIELDS

TURF FIELD LIGHTING:

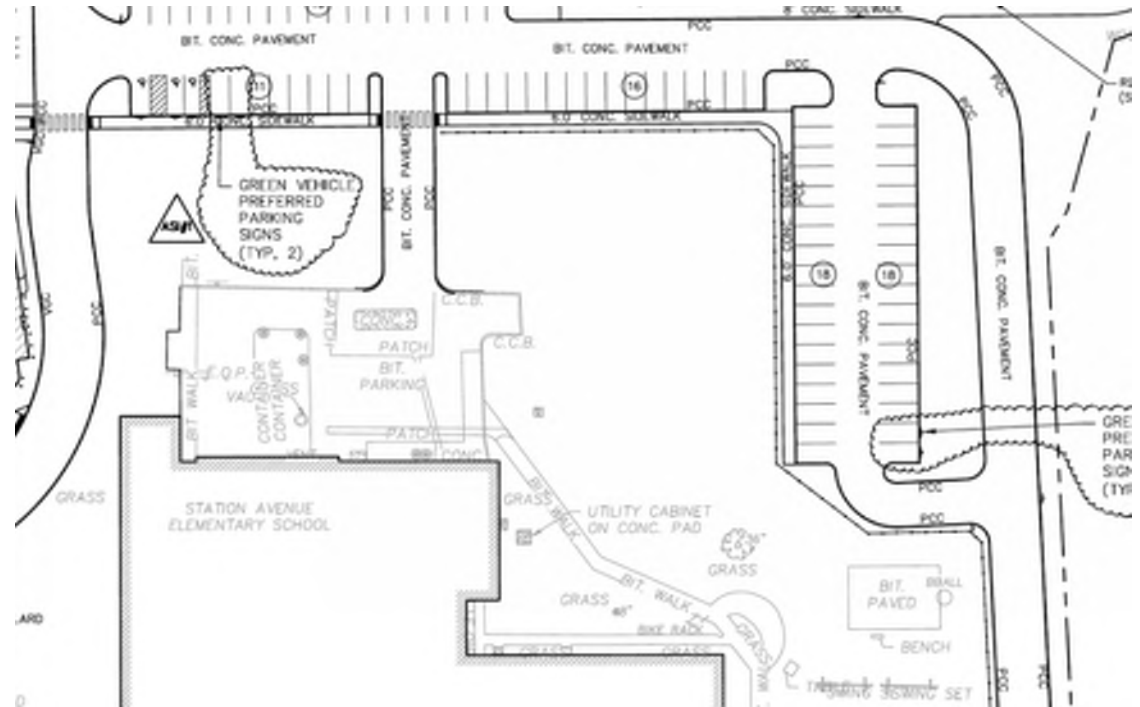
CURRENTLY BEING WORKED ON BY PE AND SUBCONSULTANTS. 90% DRAWINGS WERE ISSUE AND REVIEWED ON 3/3/2022. NEXT STEPS WILL BE TO ISSUE 100% DRAWINGS AND PRICE.



DESIGN UPDATE – SAE SERVICE ENTRANCE

SAE SERVICE ENTRANCE:

CURRENTLY BEING WORKED ON BY PE AND SUBCONSULTANTS. THE SERVICE ENTRANCE TO SAE FROM THE NEW SCHOOL IS BEING SHIFTED SLIGHTLY. THE NEW ENTRANCE WILL ALLOW FOR MORE PLAY AREA BEHIND SAE. THIS WILL ALSO INCLUDE A PATH FROM THE NEW PARKING LOT TO SAE.

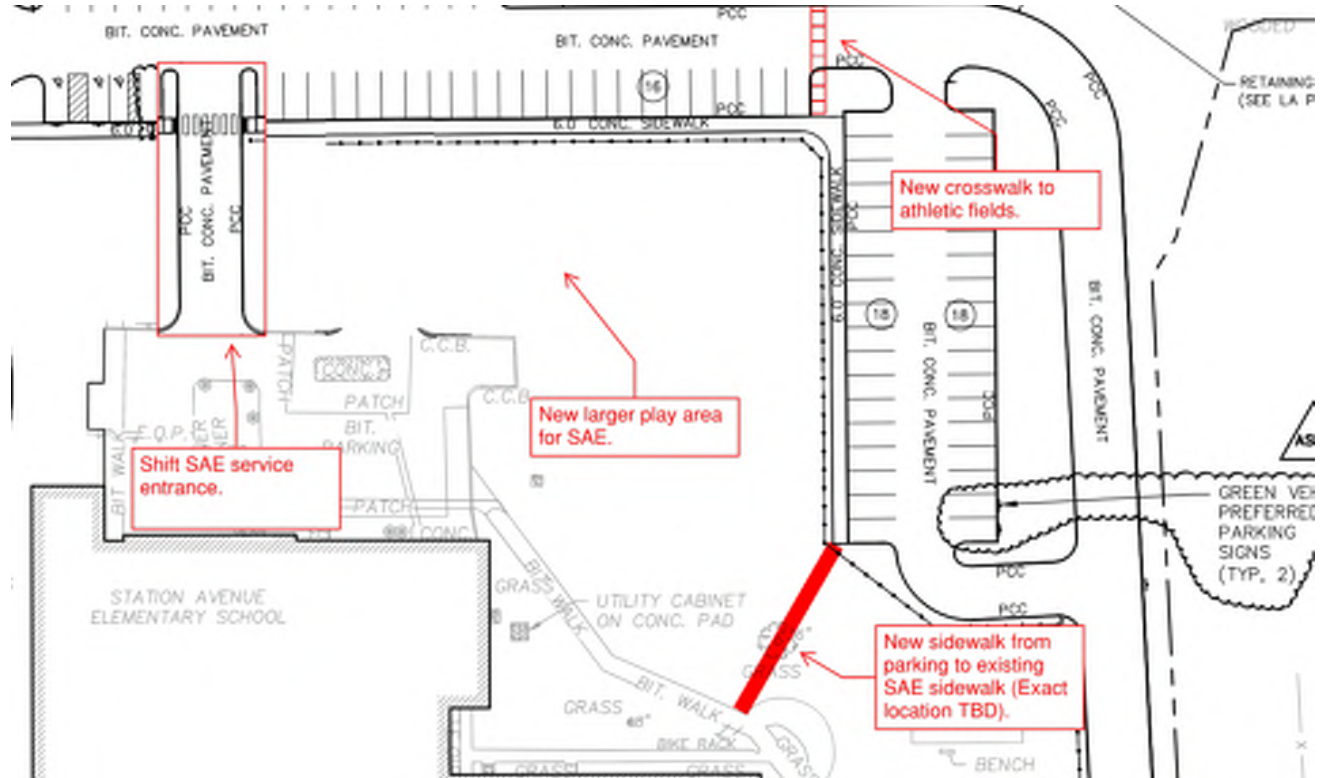


CONTRACT SAE SERVICE ENTRANCE

DESIGN UPDATE – SAE SERVICE ENTRANCE

SAE SERVICE ENTRANCE:

CURRENTLY BEING WORKED ON BY PE AND SUBCONSULTANTS. THE SERVICE ENTRANCE TO SAE FROM THE NEW SCHOOL IS BEING SHIFTED SLIGHTLY. THE NEW ENTRANCE WILL ALLOW FOR MORE PLAY AREA BEHIND SAE. THIS WILL ALSO INCLUDE A PATH FROM THE NEW PARKING LOT TO SAE.



NEW SAE SERVICE ENTRANCE

DESIGN UPDATE – COLORED CONCRETE AGGREGATE

EXTERIOR SEASHELL CONCRETE:

CURRENTLY BEING WORKED ON BY PE AND SUBCONSULTANTS. INSTEAD OF USING SEASHELL CONCRETE PAVING IT WAS PROPOSED TO THE DISTRICT TO CHANGE THIS TO EXPOSED CONCRETE AGGREGATE. THE AGGREGATE WILL BE PLACED OVER TOP THE CONCRETE FOR A UNIQUE EFFECT. THIS WILL HELP WITH PREVENTATIVE MAINTENANCE NEW LAYOUT DRAWINGS WILL BE ISSUED IN AN UPCOMING BULLETIN.



FFE/IT BUDGET UPDATE

	Budget			Actual			MSBA Reimbursable Rate		Delta	Notes
	\$/Student	# Students	Total	\$/Student	# Students	Total	Rate	Max Reimbursable Amount	Delta	
FFE	\$1,200	940	\$1,128,000	\$1,921	940	\$1,806,051.00	57.68%	\$650,630	(\$678,051)	
IT (Detail Below)	\$1,200	940	\$1,128,000	\$1,028	940	\$966,290.60	57.68%	\$650,630	\$161,709	
- WAPS	--	--	--	--	--	\$127,149.00	--	--	--	LOA #1 - Ready to release
- Switches	--	--	--	--	--	\$202,167.35	--	--	--	LOA #2 - Ready to release
- Sonicwall	--	--	--	--	--	\$30,205.00	--	--	--	LOA #3 - Ready to release
- Interactive Screens	--	--	--	--	--	\$471,406.25	--	--	--	LOA #4 - Ready to release
- File Servers	--	--	--	--	--	\$35,363.00	--	--	--	
- Phones**	--	--	--	--	--	\$100,000.00	--	--	--	Place holder
Total	--	--	\$2,256,000	\$2,949	--	\$2,772,341.60	57.68%	\$1,301,261	(\$516,342)	

*Additional costs will need to be approved by the School Building Committee and are not eligible for MSBA reimbursement.

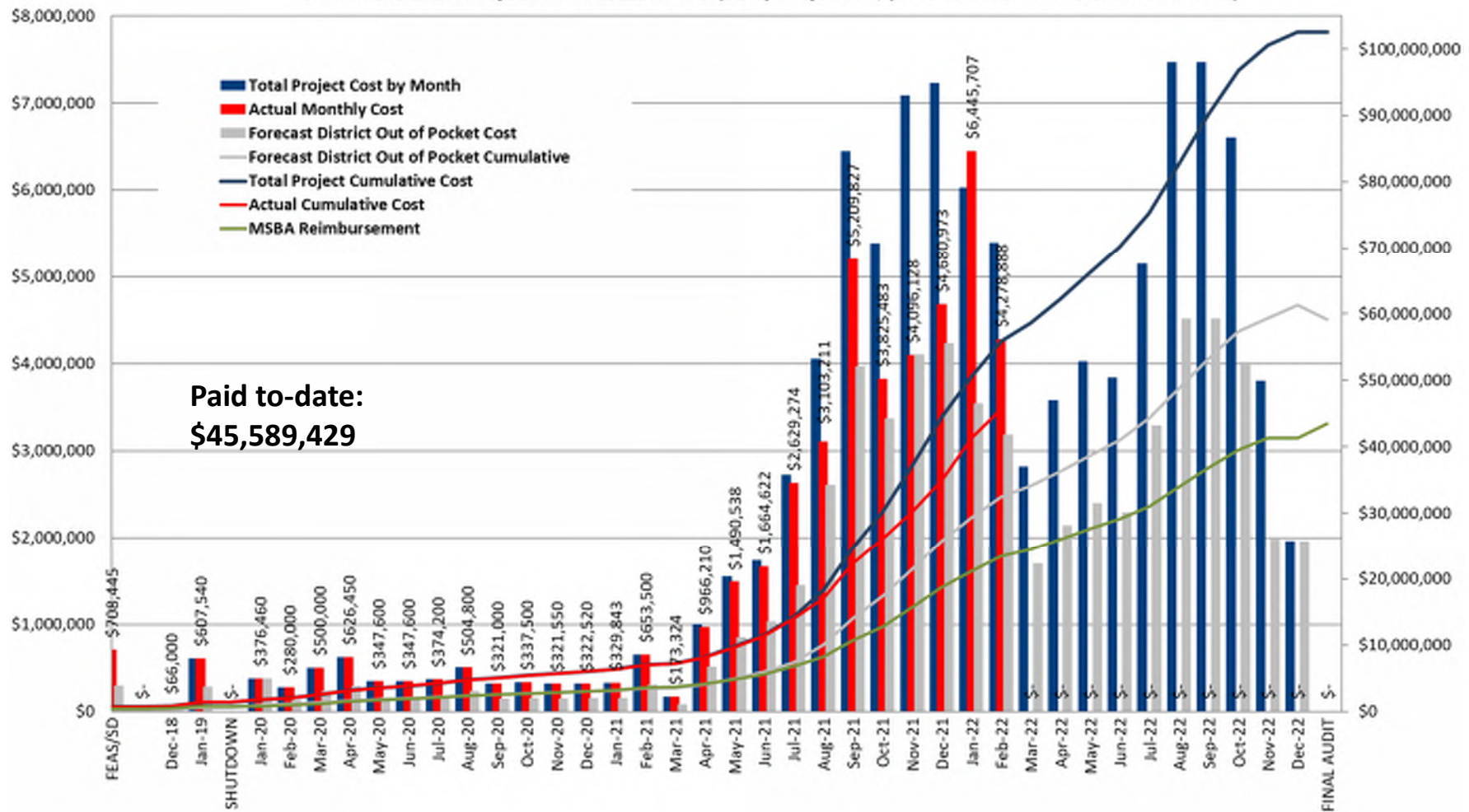
**Remaining IT budget can be applied to the amount over the FFE budget but is not eligible for MSBA reimbursement.

***FFE items are not finalized. Once finalized (within a few weeks) the FFE items will be put out to bid.

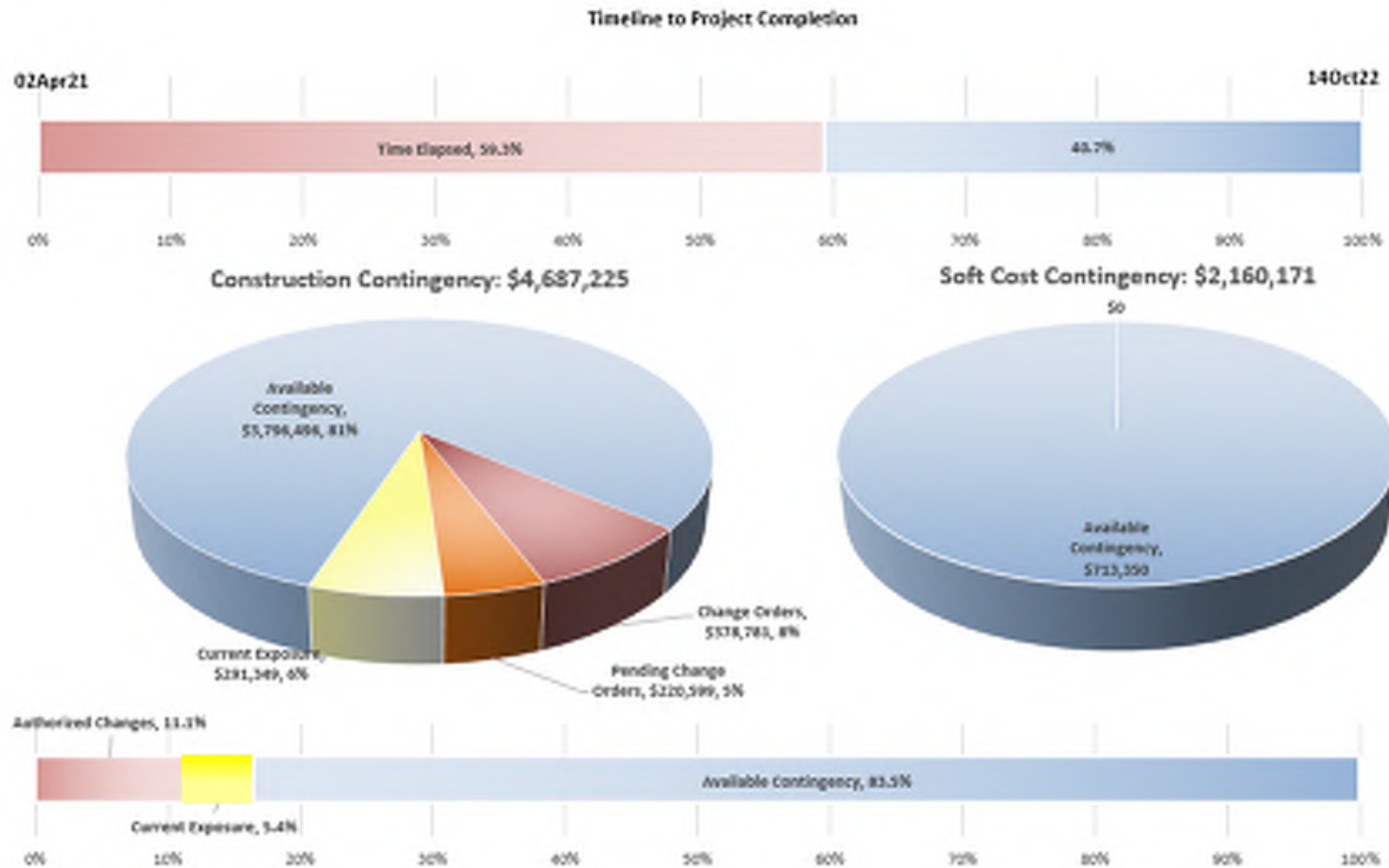
****Green items have been recommended for purchase.

PROJECT CASHFLOW

DYIMS Cashflow Projection - \$102.5M TPB (Early Projection, prior to MSBA PFA Bid Amendment)



CONSTRUCTION CONTINGENCY



NEW BUSINESS

- New Business
- Public Comment Period
- Motion to Adjourn

THANK YOU



**PERKINS —
EASTMAN**

Photo courtesy of TripAdvisor



DENNIS-YARMOUTH SCHOOL PROJECT

**THE DYIMS SCHOOL BUILDING
COMMITTEE**

