



DENNIS-YARMOUTH SCHOOL PROJECT

THE DYIMS SCHOOL BUILDING
COMMITTEE

June 2, 2022

PERKINS —
EASTMAN



PMA Consultants



AGENDA

Mattacheese School Building Committee Agenda
Thursday, June 2, 2022
6:30 P.M.

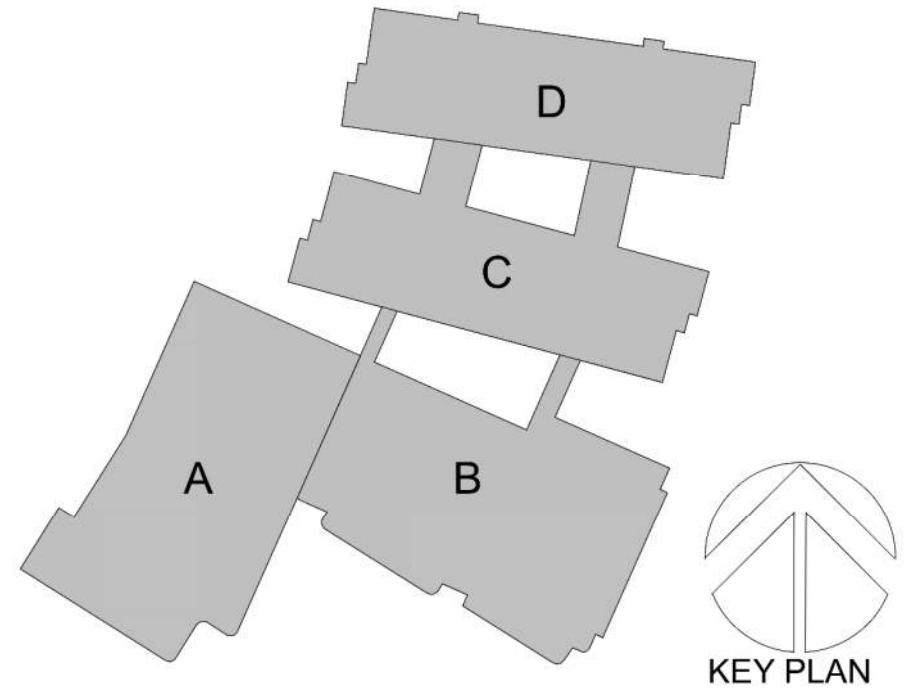
Mattacheese Middle School Project

		Estimated Time Frame
I.	Chair Joseph Tierney Call to Order	6:30 P.M.
II.	Approval of Prior Meeting Minutes Discussion Motion and Second Needed Vote to Approve	6:30 P.M.
III.	Overview of Meeting Agenda Joe Tierney – SBC Chair	6:35 P.M.
IV.	Construction Update a. Progress Photos b. Progress Update c. Lookahead Schedule	6:35 P.M.
V.	Design Update a. Design Update	6:45 P.M.
VI.	FFE/IT Update a. Status Update	7:00 P.M.
VII.	Project Budget & Cashflow a. Cashflow Update b. Change Authorization Overview i. VOTE (if required): on any discretionary changes in excess of \$25k not previously authorized.	7:25 P.M.
VIII.	New Business	7:35 P.M.
IX.	Meeting Adjournment	7:35 P.M.

May Activities

- Finishes started in building D
- Curtain walls and windows being installed in A building and cafetorium
- AVB complete on all buildings
- Exterior fiber cement siding and metal paneling ongoing on exterior façade of D building and connecting corridors
- Brick veneer complete on C building and the gym
- RTU's have been set on top of the roof
- Kitchen cooler/freezer have been installed

APRIL CONSTRUCTION UPDATE



CONSTRUCTION PROGRESS PHOTOS



Building D exterior façade

CONSTRUCTION PROGRESS PHOTOS



Cafetorium AVB and curtain wall



CONSTRUCTION PROGRESS PHOTOS

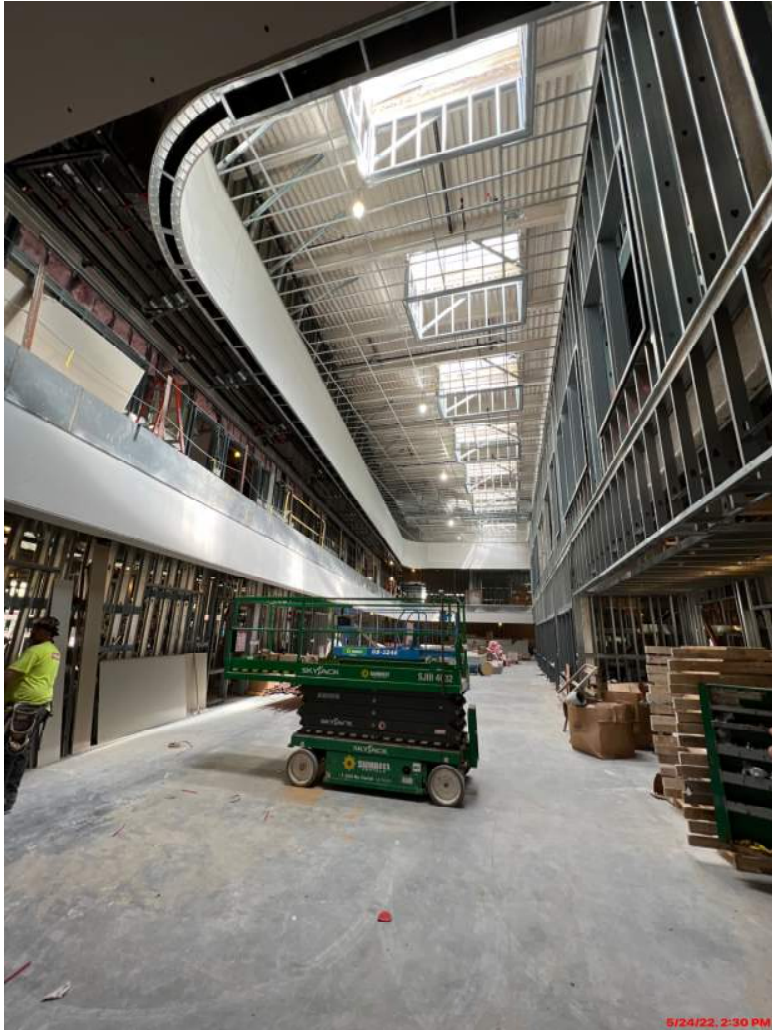
D wing gang bathroom tile work

CONSTRUCTION PROGRESS PHOTOS



Walk in freezer/cooler installed in
kitchen area

CONSTRUCTION PROGRESS PHOTOS



Main lobby hard ceiling framed

CONSTRUCTION PROGRESS PHOTOS



Oko skin installed in North Courtyard

CONSTRUCTION PROGRESS PHOTOS



RTU set on C wing roof



CONSTRUCTION PROGRESS PHOTOS

Upper field formwork, rebar and drain for turf curb

CONSTRUCTION PROGRESS PHOTOS

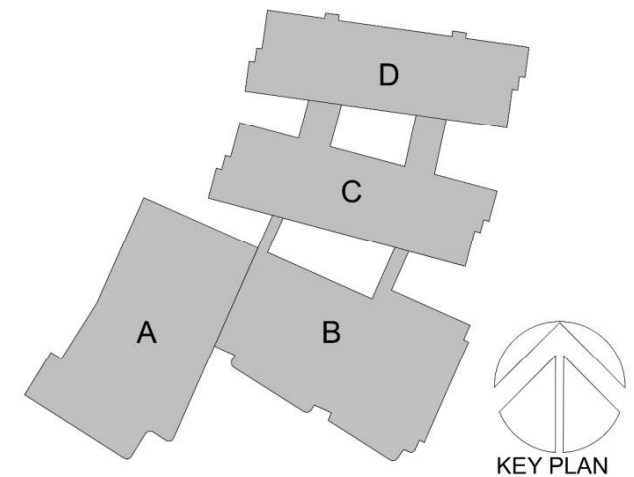


D building hallway tile work in progress

CONSTRUCTION UPDATE

LOOKAHEAD SCHEDULE

- Continue curtainwall installation
- Duct and pipe installation in B and A wing
- Fiber cement siding and metal paneling on D and C wing
- Auditorium MEP's
- Brick veneer on building B and A
- Exterior façade prep on B wing and gym
- Finishes in D wing will continue
- Painting in C wing

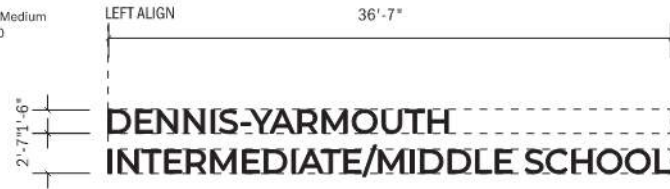


DESIGN UPDATE – EXTERIOR SIGNAGE

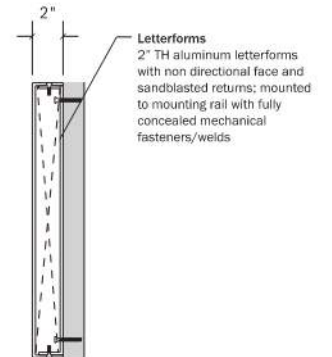


1 GRAPHIC LAYOUT
SCALE: 1/8"=1'-0"

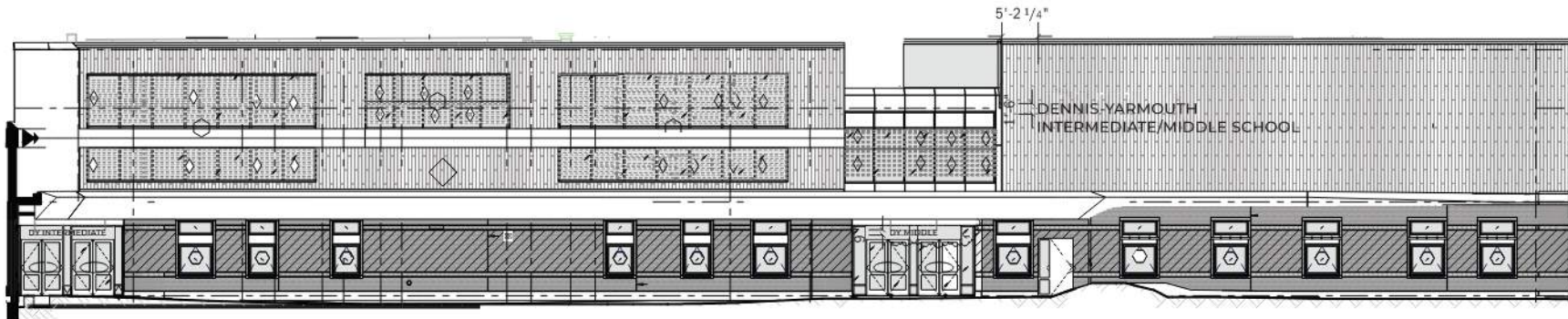
Text
Font:
Montserrat, Medium
Kerning: +10



2 ELEVATION
SCALE: 1/8"=1'-0"

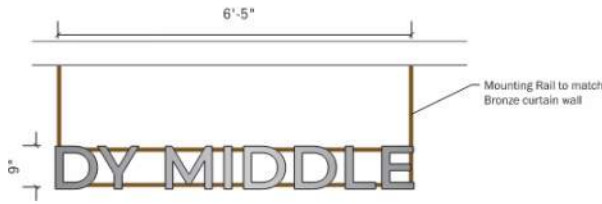


3 SIDE ELEVATION
SCALE: 3/8"=1'-0"



4 INSTALLATION ELEVATION
SCALE: 1/16"=1'-0"

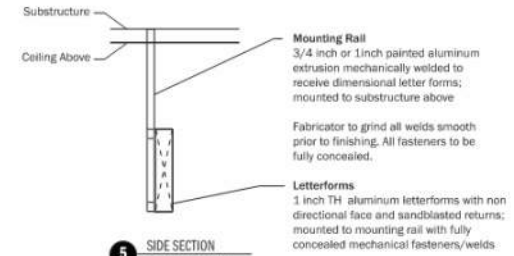
DESIGN UPDATE – EXTERIOR SIGNAGE



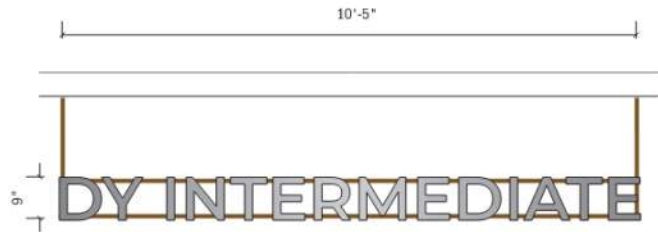
1 GRAPHIC LAYOUT
SCALE: 1/2"=1'-0"



3 GRAPHIC LAYOUT
SCALE: 1/2"=1'-0"



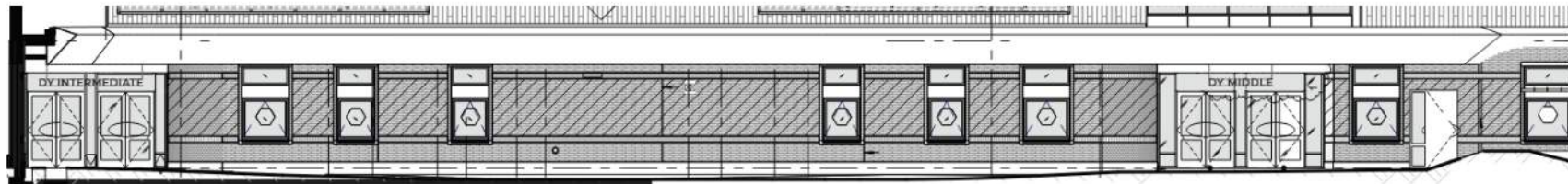
5 SIDE SECTION
SCALE: 1"=1'-0"



2 GRAPHIC LAYOUT
SCALE: 1/2"=1'-0"



4 ELEVATION
SCALE: 1/2"=1'-0"

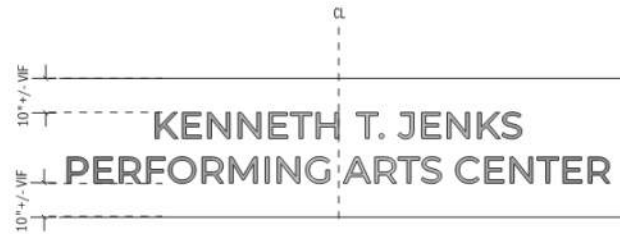


6 INSTALLATION ELEVATION
SCALE: 3/32"=1'-0"

DESIGN UPDATE – EXTERIOR SIGNAGE



1 GRAPHIC LAYOUT
SCALE: 3/8" = 1'-0"

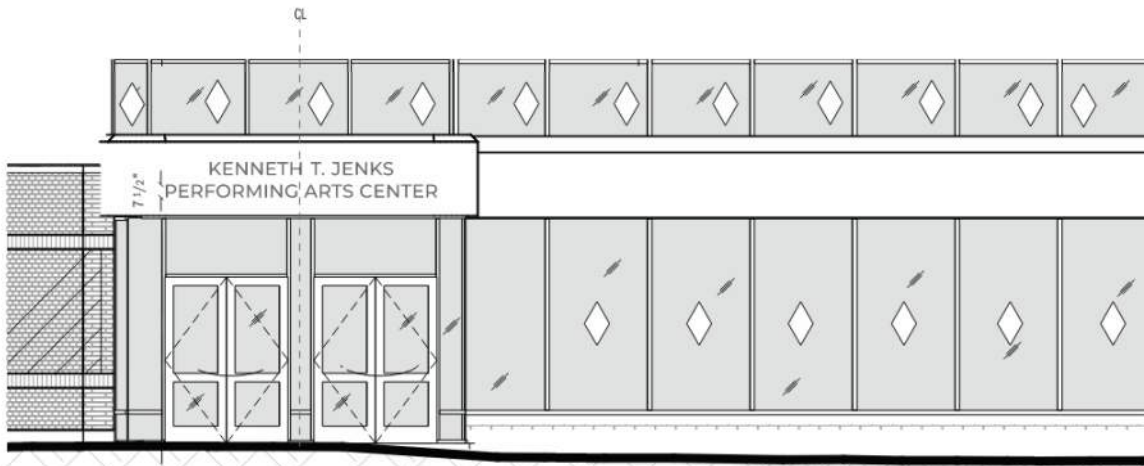


2 ELEVATION
SCALE: 3/8" = 1'-0"



3 SIDE ELEVATION
SCALE: 1-1/2" = 1'-0"

Letterforms
3/4 inch TH aluminum letterforms with
non-directional face and sandblasted
returns; mounted to canopy surface with
fully concealed mechanical fasteners



4 INSTALLATION ELEVATION
SCALE: 3/16" = 1'-0"

FFE/IT BUDGET UPDATE

	Budget			Actual			MSBA Reimbursable Rate		Delta	Notes
	\$/Student	# Students	Total	\$/Student	# Students	Total	Rate	Max Reimbursable Amount	Delta	
FFE (Detail Below)	\$1,200	940	\$1,128,000	\$1,932	940	\$1,816,288.86	57.68%	\$650,630	(\$688,289)	<i>Bid Process is underway</i>
- Initial Purchase Program	--	--	--	--	--	\$1,148,457.23	--	--	--	<i>PO Issued</i>
- Hard Bids	--	--	--	--	--	\$667,831.63	--	--	--	<i>PO Issued</i>
IT (Detail Below)	\$1,200	940	\$1,128,000	\$1,020	940	\$958,973.37	57.68%	\$650,630	\$169,027	
- WAPS	--	--	--	--	--	\$127,149.00	--	--	--	<i>PO Issued</i>
- Switches	--	--	--	--	--	\$202,167.35	--	--	--	<i>PO Issued</i>
- Sonicwall	--	--	--	--	--	\$30,205.00	--	--	--	<i>PO Issued</i>
- Interactive Screens	--	--	--	--	--	\$471,406.25	--	--	--	<i>PO Issued</i>
- File Servers	--	--	--	--	--	\$38,363.24	--	--	--	<i>PO Issued</i>
- 65" Displays	--	--	--	--	--	\$5,938.00	--	--	--	<i>PO Issued</i>
- Phones	--	--	--	--	--	\$83,744.53	--	--	--	<i>Place holder. Not finalized</i>
Total	--	--	\$2,256,000	\$2,952	--	\$2,775,262.23	57.68%	\$1,301,261	(\$519,262)	
								\$1,678,000	\$550,000	<i>SBC Approved Soft Cost Contingency 3/3/22</i>
									\$30,738	<i>Balance</i>

*Additional costs will need to be approved by the School Building Committee and are not eligible for MSBA reimbursement

**PO's have been issued for green items

CHANGE AUTHORIZATION – TURF FIELD LIGHTING UPDATE



404 Wyman St., Suite 400
Waltham, MA 02451
Ph : (617)614-3500

Change Request

To: Chad Crittenden
PMA Consultants
35 Braintree Hill Park
Suite 300
Braintree, MA 02184
Ph: (781)794-1404

Number: 081.2
Date: 5/3/22
Job: 21-0060 Dennis Yarmouth-Middle School
Response Due Date:
Urgency: Normal

Description: Bulletin #32 - Field Lighting

Listed below is the pricing to make the following changes:

This scope includes:

Installation of the musco lighting bases and poles as requested in the Bulletin #32 drawings. Please see the attached schedule, this schedule is based on assumed leadtimes and these may vary depending on when these lights are released. In addition to pricing from our electrical subcontractor this pricing includes:

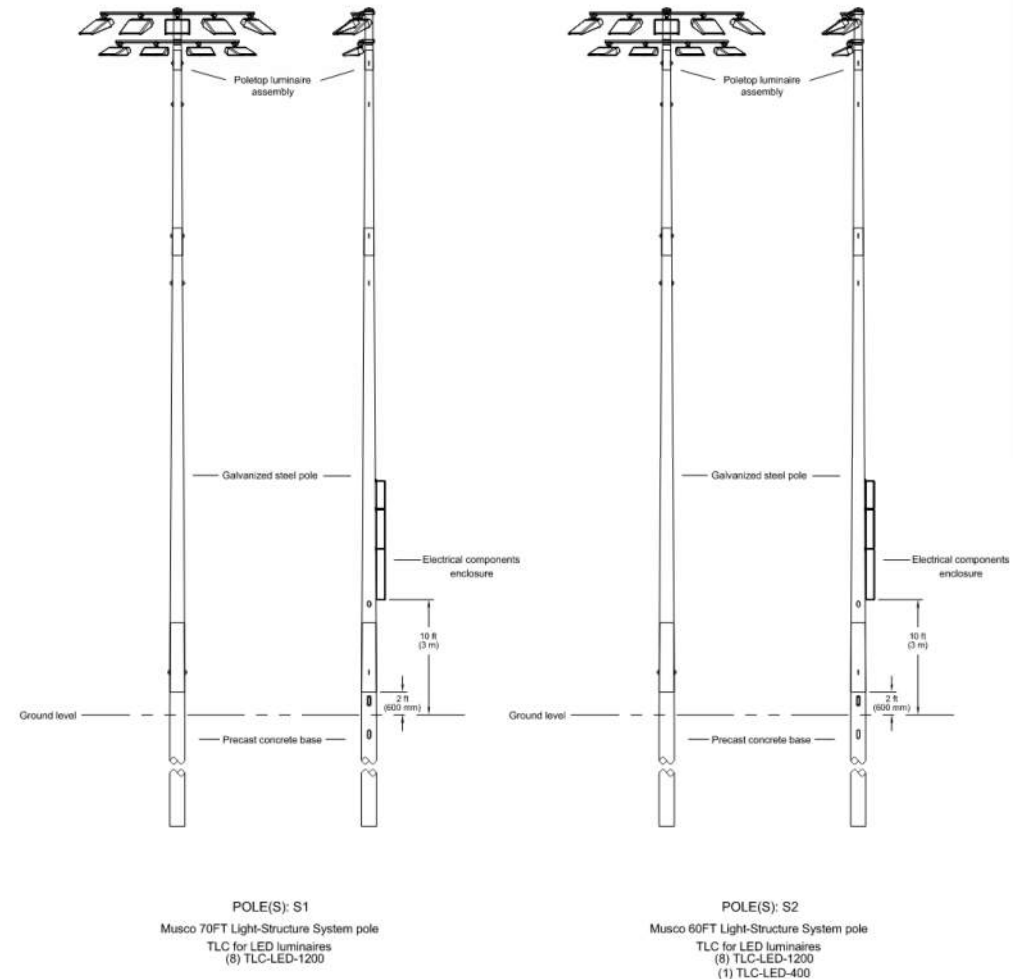
- Additional time for a superintendent for supervision as the installation of these light fixture and the installation of the associated switch gear will occur after our scheduled substantial completion date due to the procurement of these items. (Assumes full time supervision from substantial completion on 10/14/22 until switch gear installation is complete 1/26/23)

- Additional time for a laborer (assumes 4 weeks for duration of install of lights) as well as additional dumpsters (assumes 2 for disposal of protection materials) to assist with protection and clean up of said protection due to the sequencing of the installation of these lights.

- An allowance for repair of finishes surrounding these fields. Due to the timing and sequencing of this installation, it will occur over finished products. There is a possibility that even with extensive protection that there could be damages to the surrounding finishes.

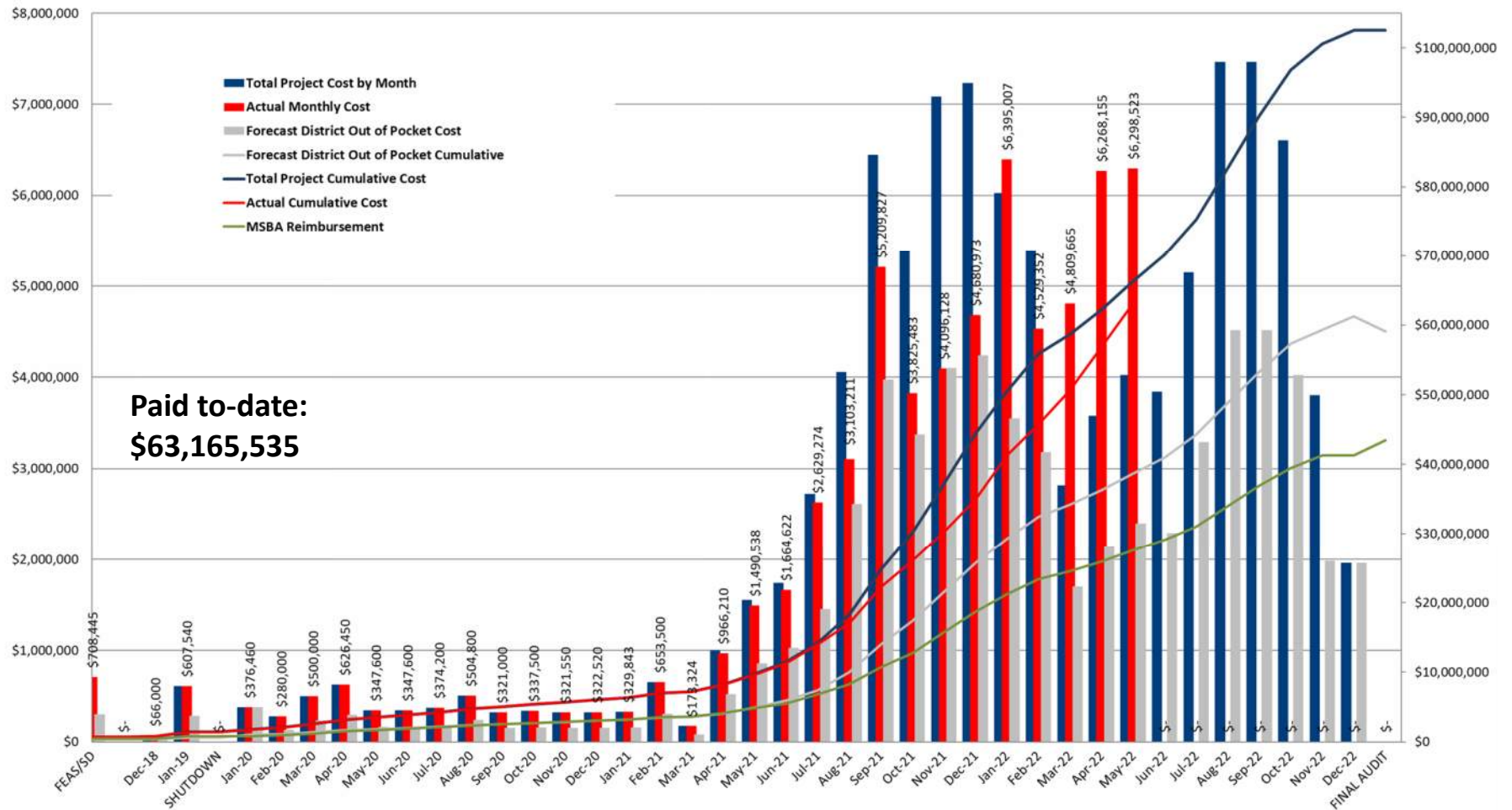
*Please note that this price does not include the additional electrical permit cost, we have not been able to confirm the permit cost with the Yarmouth Building Department at this time and this cost will need to be addressed once it is confirmed

Description	Price
Furnish and Install of Lighting	\$1,337,368.57
Site Supervision	\$87,040.00
Additional Protection / Clean up	\$15,840.00
Dumpster	\$1,500.00
ALLOWANCE - Repair finishes	\$50,000.00
Disposal of Spoils	\$4,755.00
Site Survey - Layout of Lights	\$2,100.00
Subtotal:	\$1,498,603.57
Permit	\$2,622.56
Builder's Risk	\$1,501.23
P&P Bonds	\$8,903.66
GL & Property Insurance	\$10,581.42
FEE	\$76,110.62
Total:	\$1,598,323.06

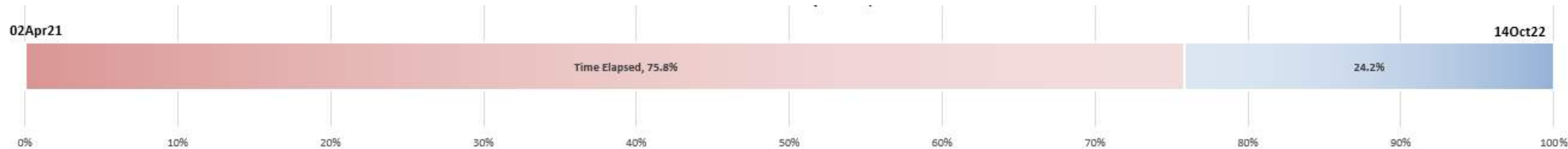


PROJECT CASHFLOW

DYIMS Cashflow Projection - \$102.5M TPB (Early Projection, prior to MSBA PFA Bid Amendment)



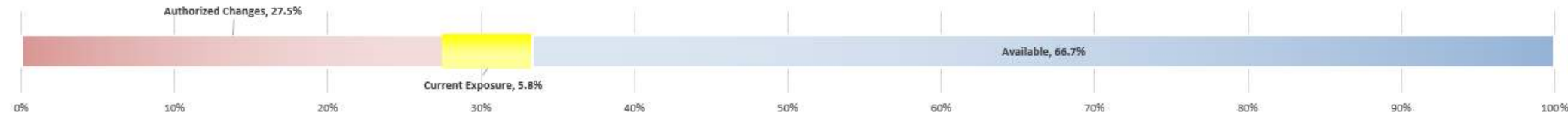
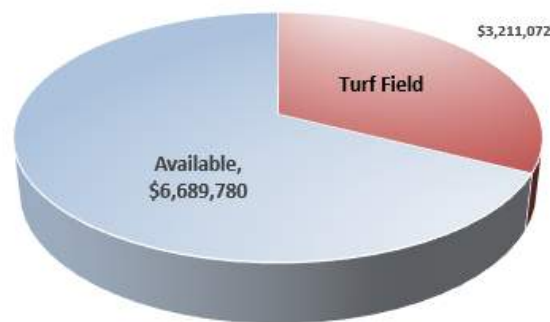
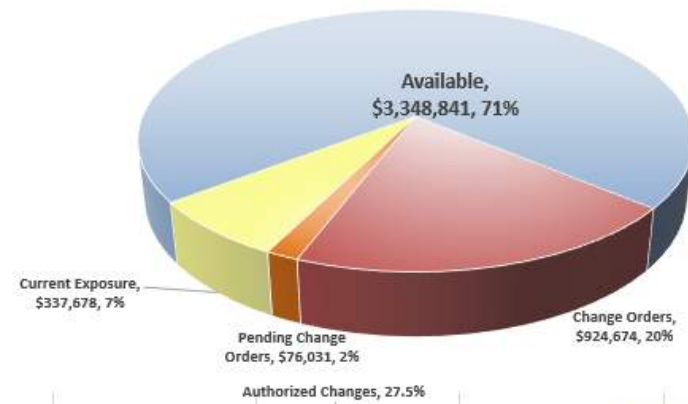
CONSTRUCTION CONTINGENCY



Construction Contingency: \$4,687,225

Bid Savings: \$9,900,852

Soft Cost Contingency: \$712,350



NEW BUSINESS

- New Business
- Public Comment Period
- Motion to Adjourn

THANK YOU



**PERKINS —
EASTMAN**

Photo courtesy of TripAdvisor



DENNIS-YARMOUTH SCHOOL PROJECT

**THE DYIMS SCHOOL BUILDING
COMMITTEE**